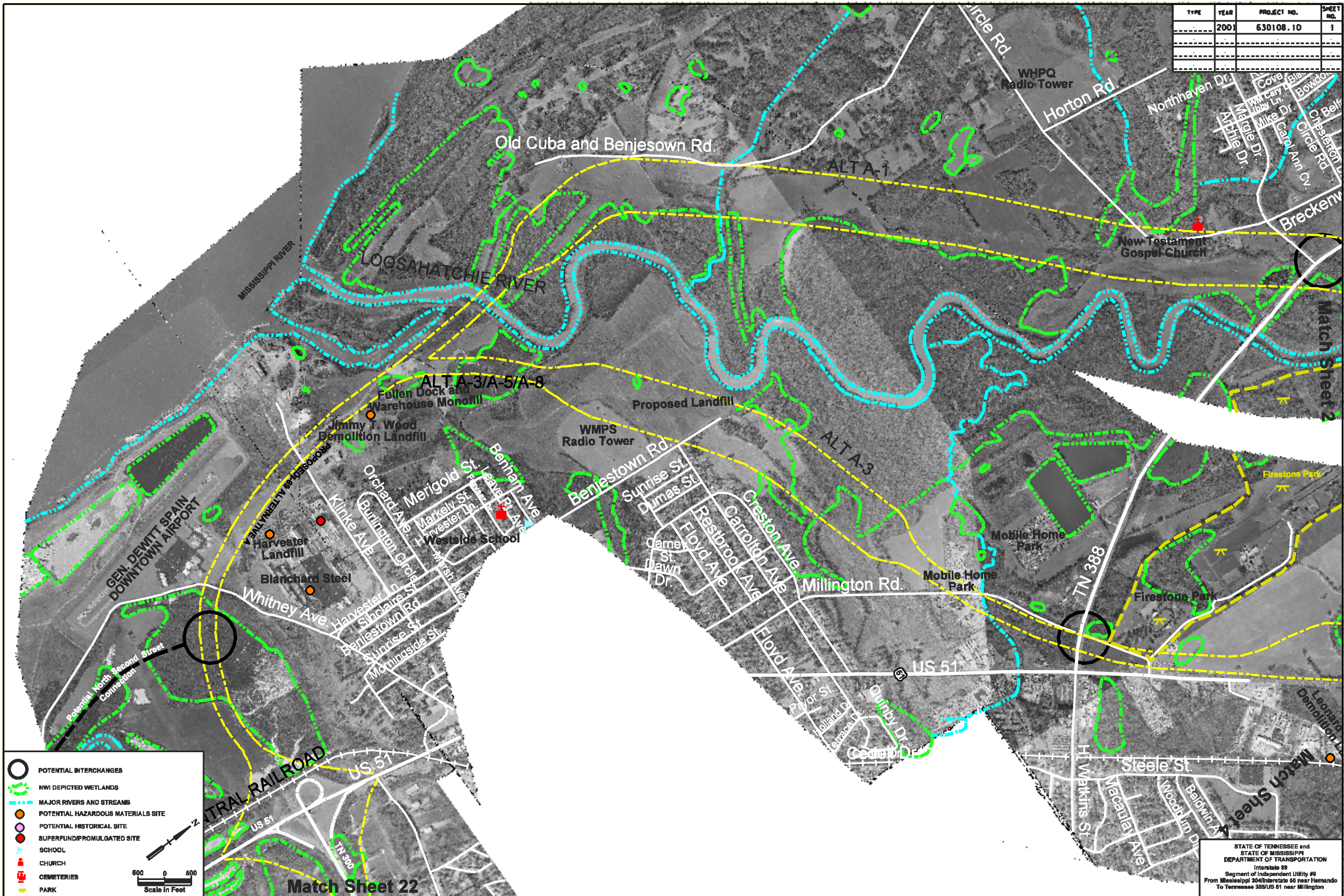


TYPE	YEAR	PROJECT NO.	SHEET NO.
	2001	630108.10	1



- POTENTIAL INTERCHANGES
- NWI DEPICTED WETLANDS
- MAJOR RIVERS AND STREAMS
- POTENTIAL HAZARDOUS MATERIALS SITE
- POTENTIAL HISTORICAL SITE
- SUPERFUND/PROMULGATED SITE
- SCHOOL
- CHURCH
- CEMETERIES
- PARK

Scale in Feet

Match Sheet 22

STATE OF TENNESSEE and  
 STATE OF MISSISSIPPI  
 DEPARTMENT OF TRANSPORTATION  
 Interstate 69  
 Segment of Independent Utility #9  
 From Mississippi 304/Interstate 69 near Hernando  
 To Tennessee 385/US 51 near Millington

Match Sheet 2

Match Sheet 4

SHEET 1 of 1