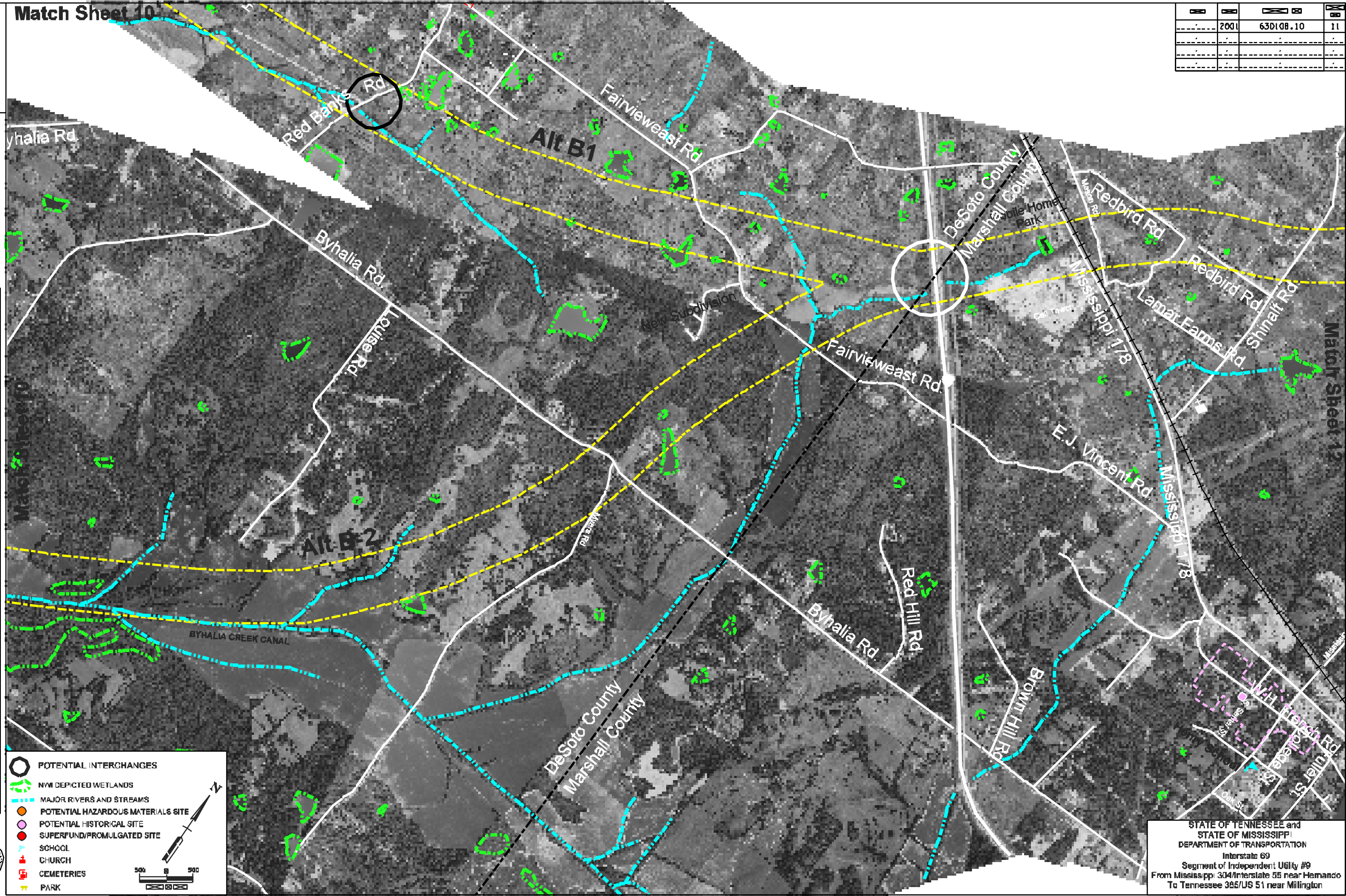


2001	63D108.10	11

FILE NO. ---



POTENTIAL INTERCHANGES

NWI DEPICTED WETLANDS

MAJOR RIVERS AND STREAMS

POTENTIAL HAZARDOUS MATERIALS SITE

POTENTIAL HISTORICAL SITE

SUPERFUND/PROMULGATED SITE

SCHOOL

CHURCH

CEMETERIES

PARK

STATE OF TENNESSEE and
STATE OF MISSISSIPPI
DEPARTMENT OF TRANSPORTATION
Interstate 69
Segment of Independent Utility #9
From Mississippi 304/Interstate 55 near Hernando
To Tennessee 385/US 51 near Millington