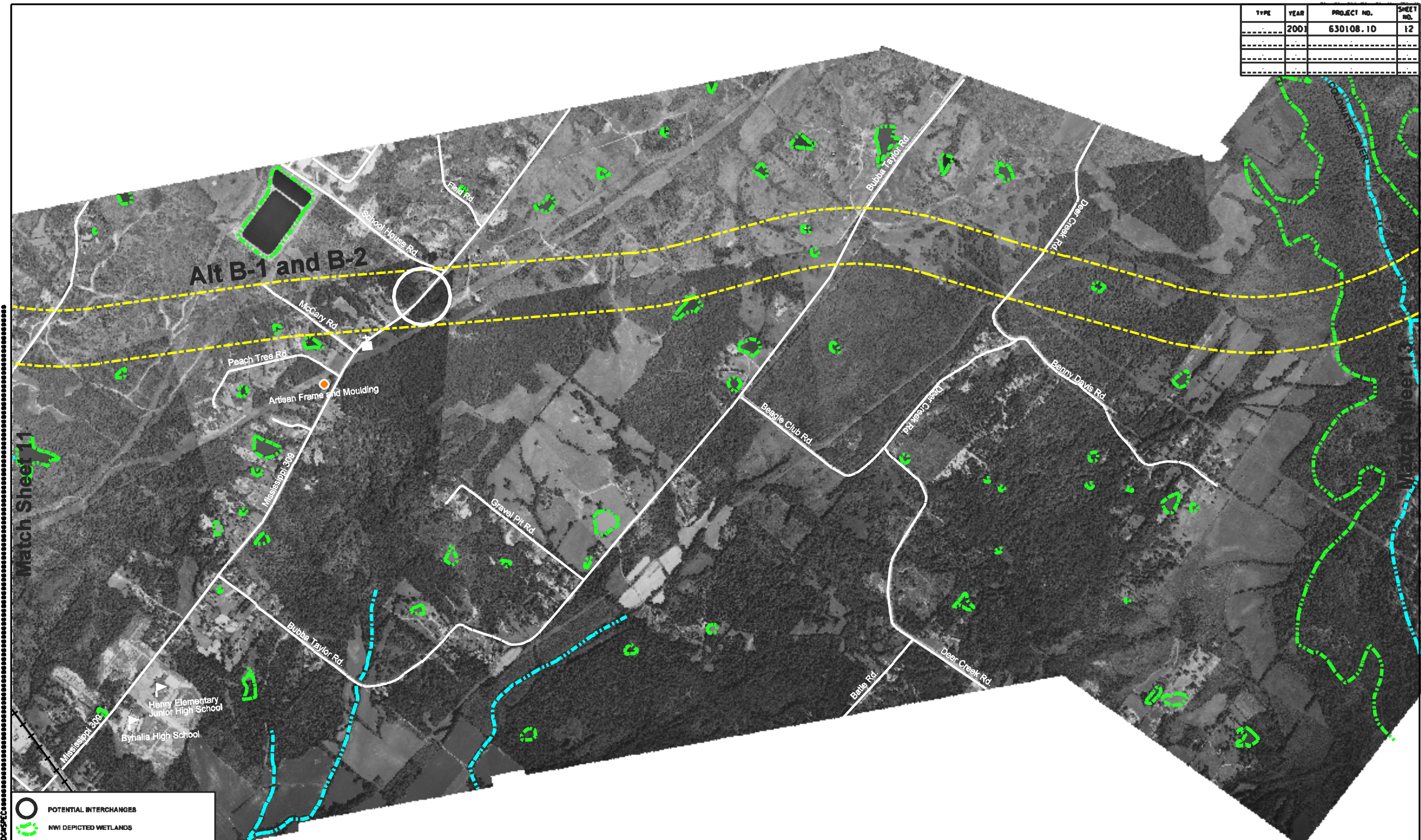


TYPE	YEAR	PROJECT NO.	SHEET NO.
	2001	630108.10	12



Match Sheet 11

Match Sheet 13

MISSISSIPPI 304

- POTENTIAL INTERCHANGES
- NWI DEPICTED WETLANDS
- MAJOR RIVERS AND STREAMS
- POTENTIAL HAZARDOUS MATERIALS SITE
- POTENTIAL HISTORICAL SITE
- SUPERFUND/PROMULGATED SITE
- SCHOOL
- CHURCH
- CEMETERIES
- PARK

Scale in Feet
0 500 500

STATE OF TENNESSEE and
STATE OF MISSISSIPPI
DEPARTMENT OF TRANSPORTATION
Interstate 69
Segment of Independent Utility #9
From Mississippi 304/Interstate 65 near Hernando
To Tennessee 385/US 51 near Millington