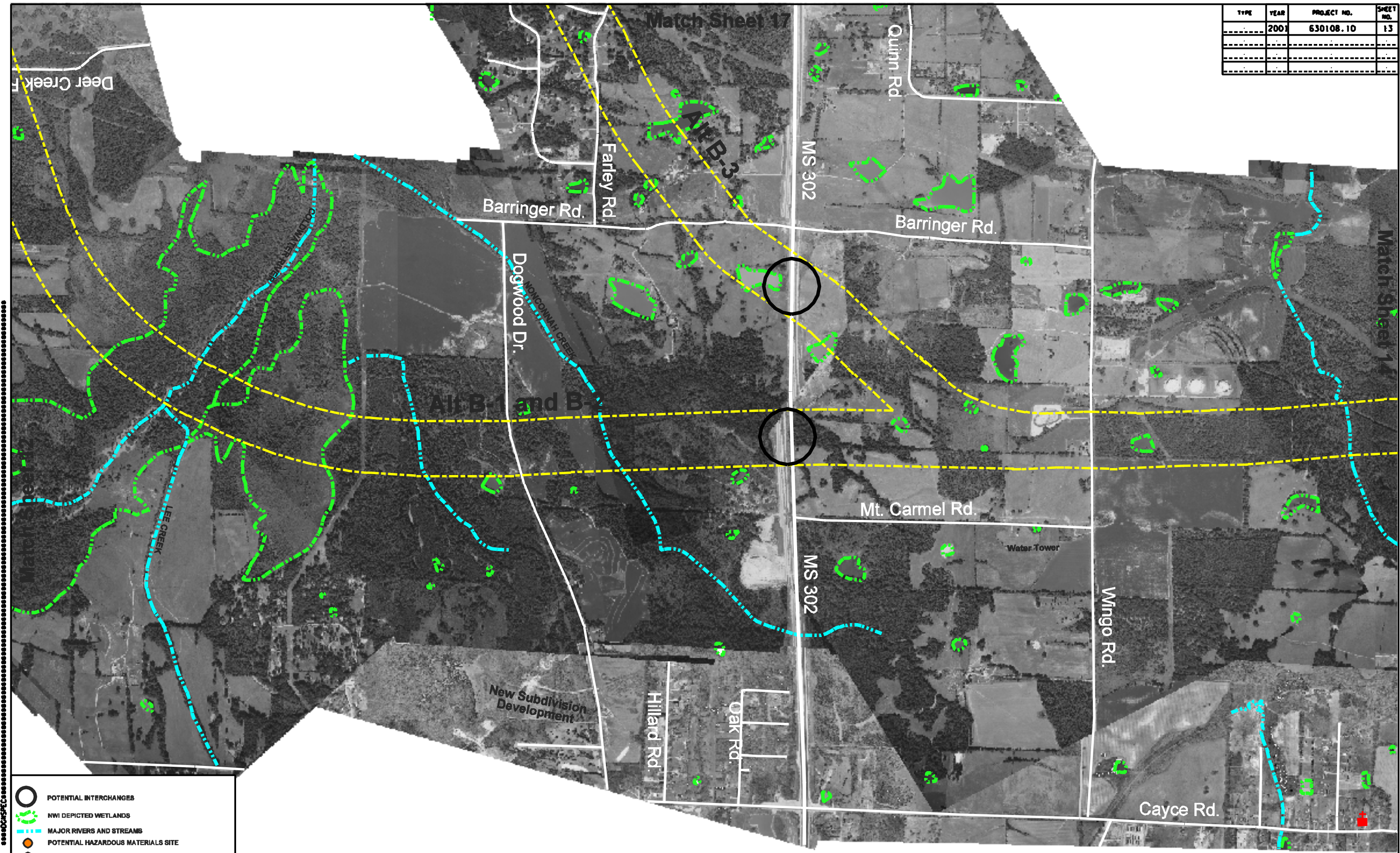


| TYPE | YEAR | PROJECT NO. | SHEET NO. |
|------|------|-------------|-----------|
| | 2001 | 630108.10 | 13 |
| | | | |
| | | | |
| | | | |



Legend

- POTENTIAL INTERCHANGES
- NWI DEPICTED WETLANDS
- MAJOR RIVERS AND STREAMS
- POTENTIAL HAZARDOUS MATERIALS SITE
- POTENTIAL HISTORICAL SITE
- SUPERFUND/PROMULGATED SITE
- SCHOOL
- CHURCH
- CEMETERIES
- PARK

Scale in Feet: 0, 500, 1000

North Arrow: N

STATE OF TENNESSEE and
STATE OF MISSISSIPPI
DEPARTMENT OF TRANSPORTATION
Interstate 69
Segment of Independent Utility #9
From Mississippi 304/Interstate 65 near Hernando
To Tennessee 385/US 51 near Millington