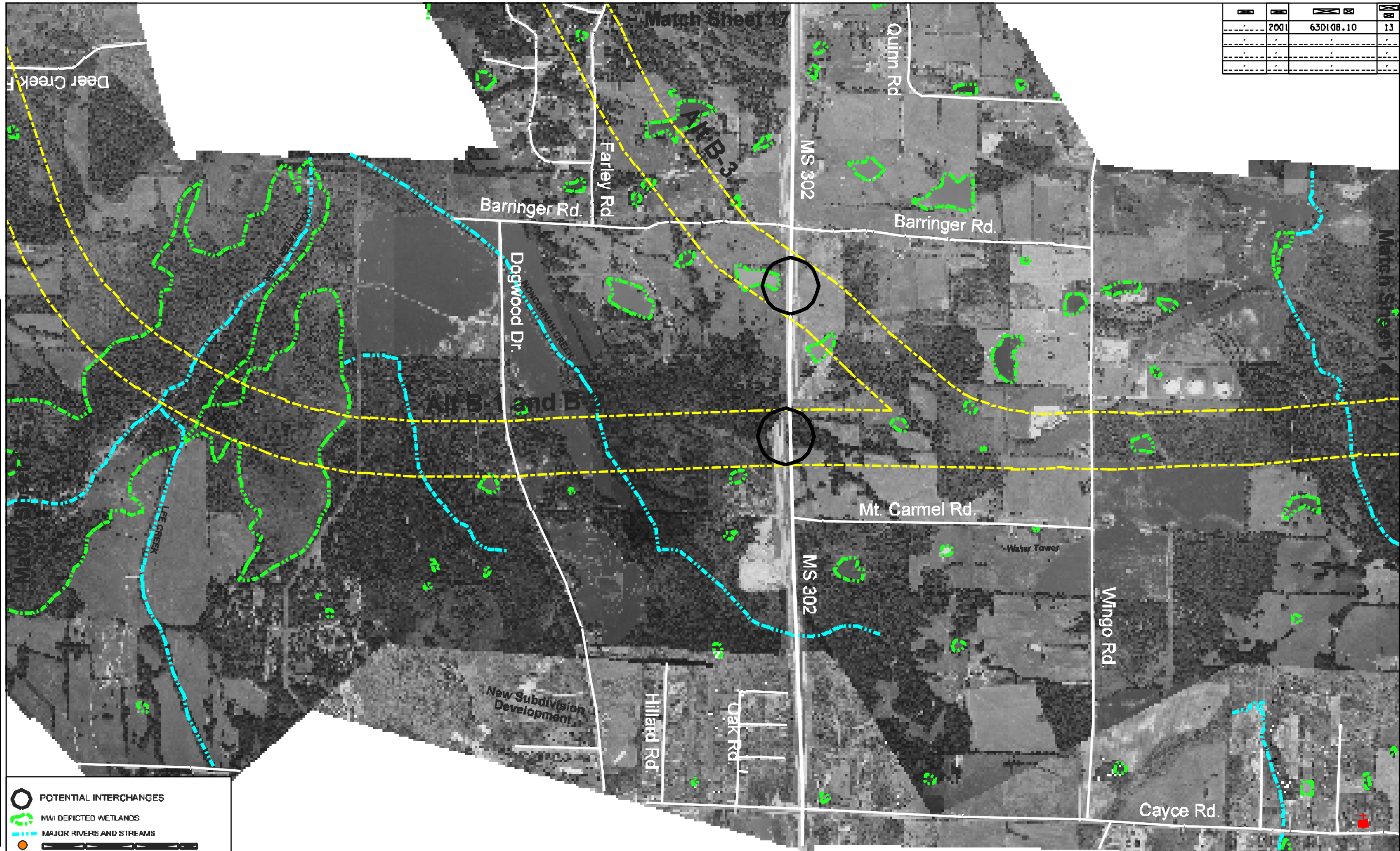
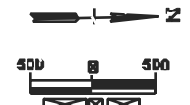


2001	63D108.10	13
------	-----------	----



- POTENTIAL INTERCHANGES
- NWI DEPICTED WETLANDS
- MAJOR RIVERS AND STREAMS
- POTENTIAL HISTORICAL SITE
- SUPERFUND/PROMULGATED SITE
- SCHOOL
- CHURCH
- CEMETERIES
- PARK



STATE OF TENNESSEE and  
STATE OF MISSISSIPPI  
DEPARTMENT OF TRANSPORTATION  
Interstate 69  
Segment of Independent Utility #9  
From Mississippi 304/Interstate 55 near Hamando  
To Tennessee 385/US 51 near Millington