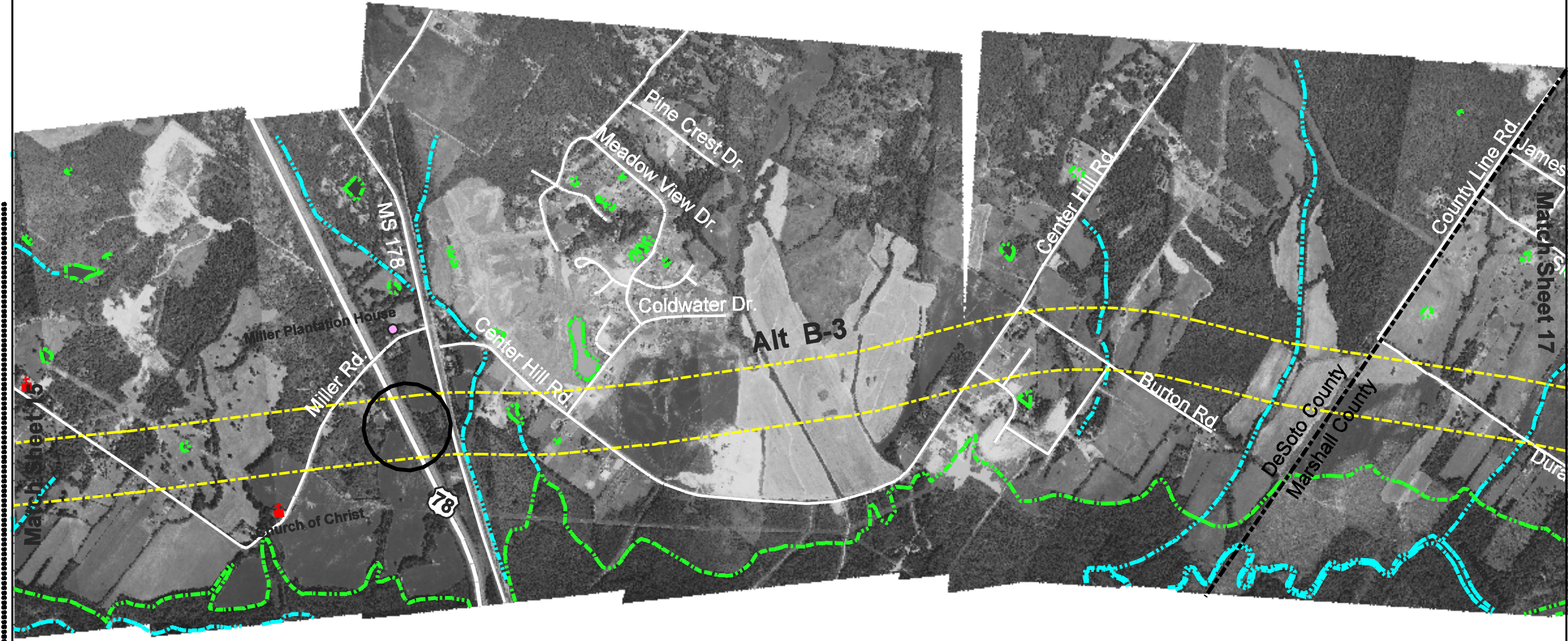


TYPE	YEAR	PROJECT NO.	SHEET NO.
	2001	630108.10	16



POTENTIAL INTERCHANGES  
 NWI DEPICTED WETLANDS  
 MAJOR RIVERS AND STREAMS  
 POTENTIAL HAZARDOUS MATERIALS SITE  
 POTENTIAL HISTORICAL SITE  
 SUPERFUND/PROMULGATED SITE  
 SCHOOL  
 CHURCH  
 CEMETERIES  
 PARK

Scale in Feet

STATE OF TENNESSEE and  
 STATE OF MISSISSIPPI  
 DEPARTMENT OF TRANSPORTATION  
 Interstate 69  
 Segment of Independent Utility #9  
 From Mississippi 304/Interstate 65 near Hernando  
 To Tennessee 385/US 51 near Millington