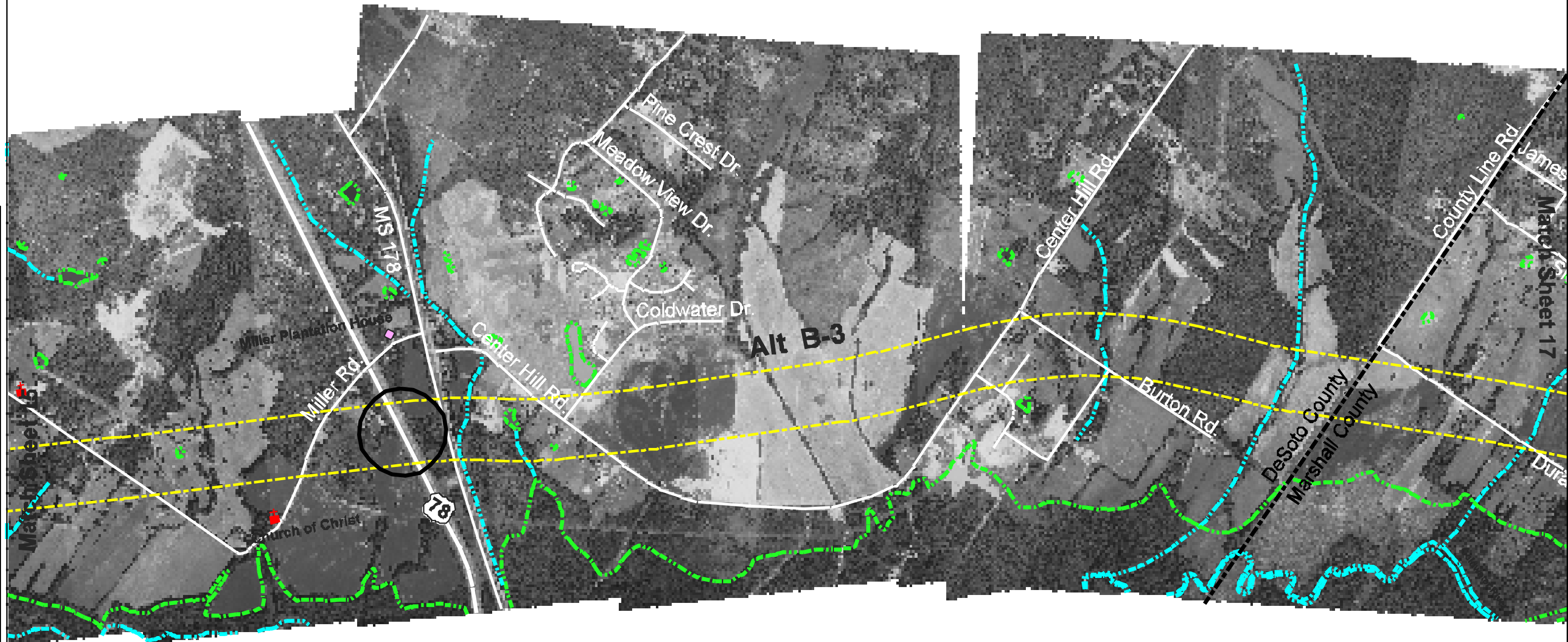


2001	63D108.10	16



POTENTIAL INTERCHANGES
 POTENTIAL HAZARDOUS MATERIALS SITE
 POTENTIAL HISTORICAL SITE
 SUPERFUND/PROMULGATED SITE
 SCHOOL
 CHURCH
 CEMETERIES
 PARK

Scale in Feet

STATE OF TENNESSEE and
 STATE OF MISSISSIPPI
 DEPARTMENT OF TRANSPORTATION
 Interstate 69
 Segment of Independent Utility #6
 From Mississippi 304/Interstate 55 near Hernando
 To Tennessee 385/US 51 near Millington