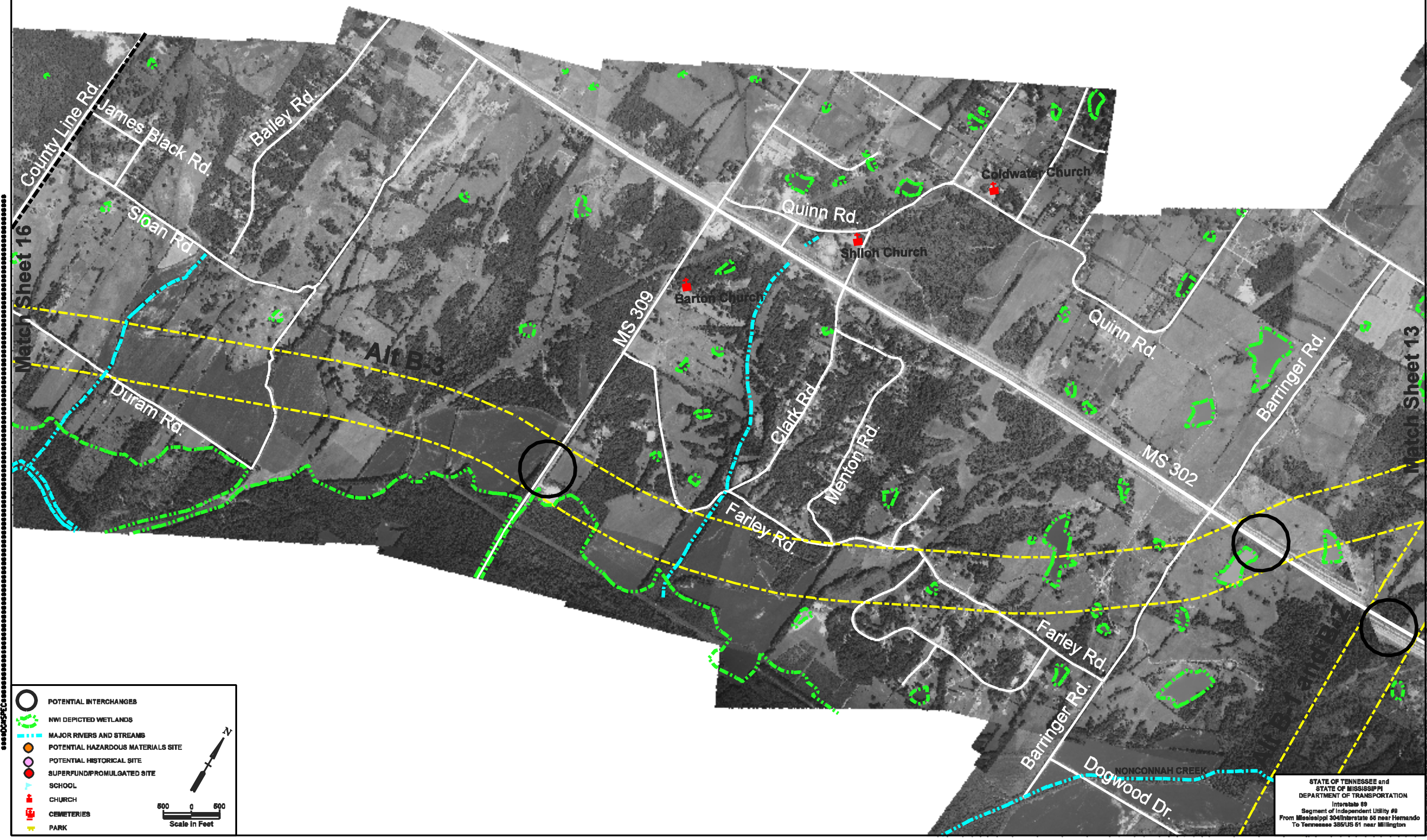


TYPE	YEAR	PROJECT NO.	SHEET NO.
	2001	630108.10	17



POTENTIAL INTERCHANGES
 NWI DEPICTED WETLANDS
 MAJOR RIVERS AND STREAMS
 POTENTIAL HAZARDOUS MATERIALS SITE
 POTENTIAL HISTORICAL SITE
 SUPERFUND/PROMULGATED SITE
 SCHOOL
 CHURCH
 CEMETERIES
 PARK

N
 500 0 500
 Scale in Feet

STATE OF TENNESSEE and
 STATE OF MISSISSIPPI
 DEPARTMENT OF TRANSPORTATION
 Interstate 69
 Segment of Independent Utility #9
 From Mississippi 304/Interstate 65 near Hernando
 To Tennessee 385/US 51 near Millington