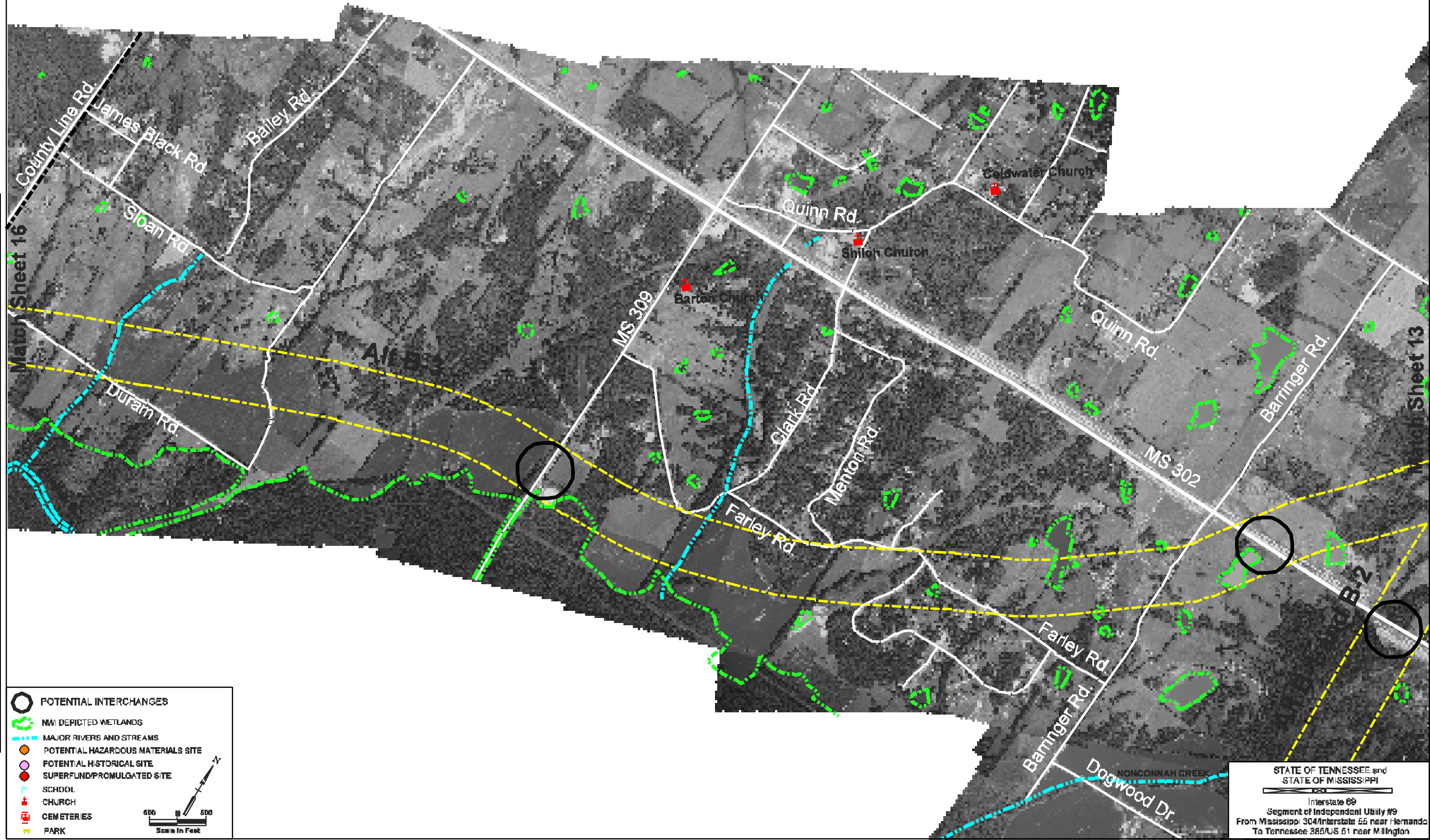


2001	63D108.10	17
------	-----------	----



- POTENTIAL INTERCHANGES
- NW/DEPICTED WETLANDS
- MAJOR RIVERS AND STREAMS
- POTENTIAL HAZARDOUS MATERIALS SITE
- POTENTIAL HISTORICAL SITE
- SUPERFUND/PROMULGATED SITE
- SCHOOL
- CHURCH
- CEMETERIES
- PARK

Scale In Feet
0 500 500

STATE OF TENNESSEE and
STATE OF MISSISSIPPI

Interstate 69
Segment of Independent Utility #9
From Mississippi 304/Interstate 55 near Hernando
To Tennessee 385/US 51 near Millington

Match Sheet 16

Match Sheet 13

Alt B-2

Alt B-2

NONCONNAH CREEK