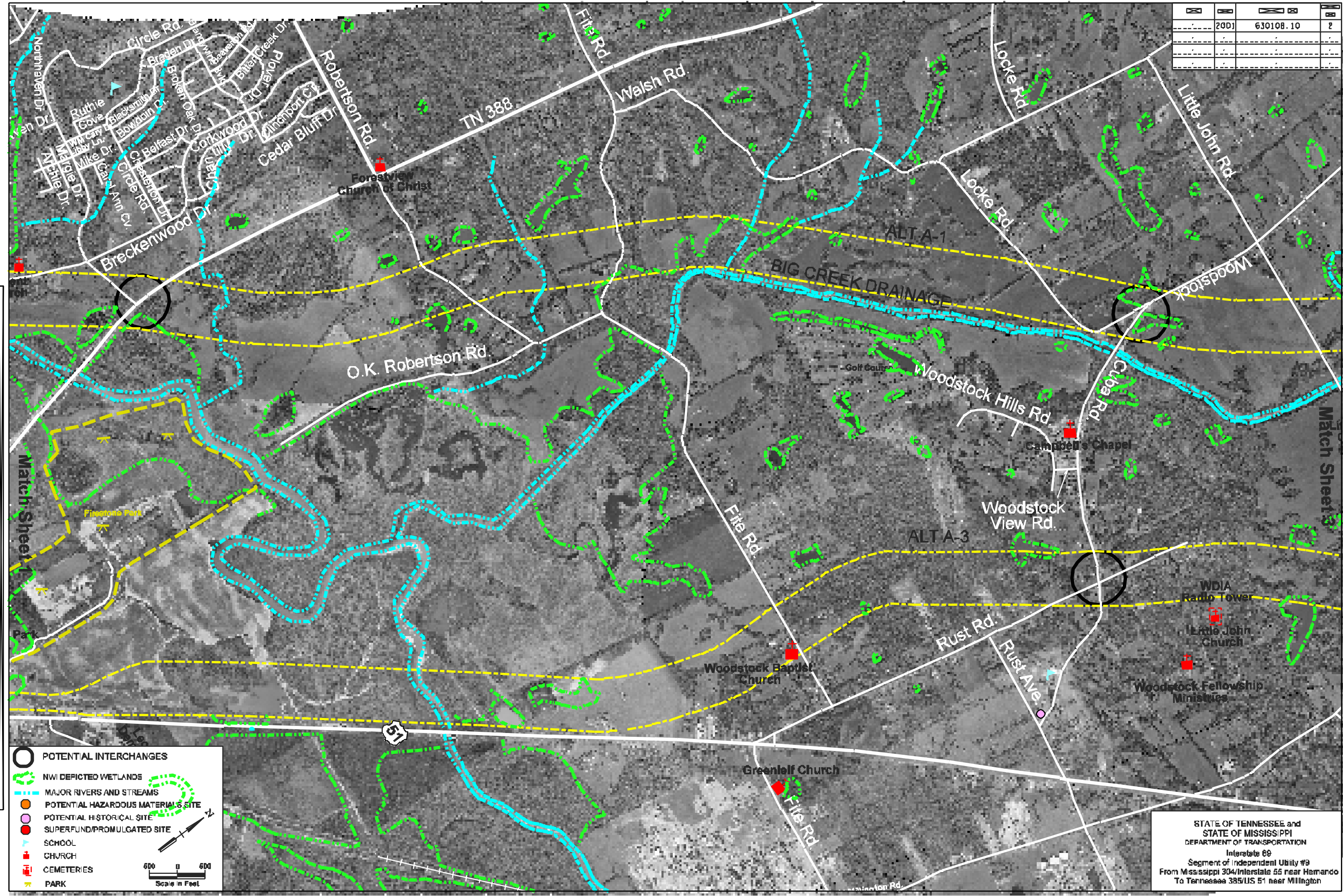


2001	630108.10	2
------	-----------	---



**POTENTIAL INTERCHANGES**

**NWI DEPICTED WETLANDS**

**MAJOR RIVERS AND STREAMS**

**POTENTIAL HAZARDOUS MATERIALS SITE**

**POTENTIAL HISTORICAL SITE**

**SUPERFUND/PROMULGATED SITE**

**SCHOOL**

**CHURCH**

**CEMETERIES**

**PARK**

Scale in Feet  
0 600

STATE OF TENNESSEE and  
STATE OF MISSISSIPPI  
DEPARTMENT OF TRANSPORTATION  
Interstate 69  
Segment of Independent Utility #9  
From Mississippi 304/Interstate 55 near Hamando  
To Tennessee 385/US 51 near Millington