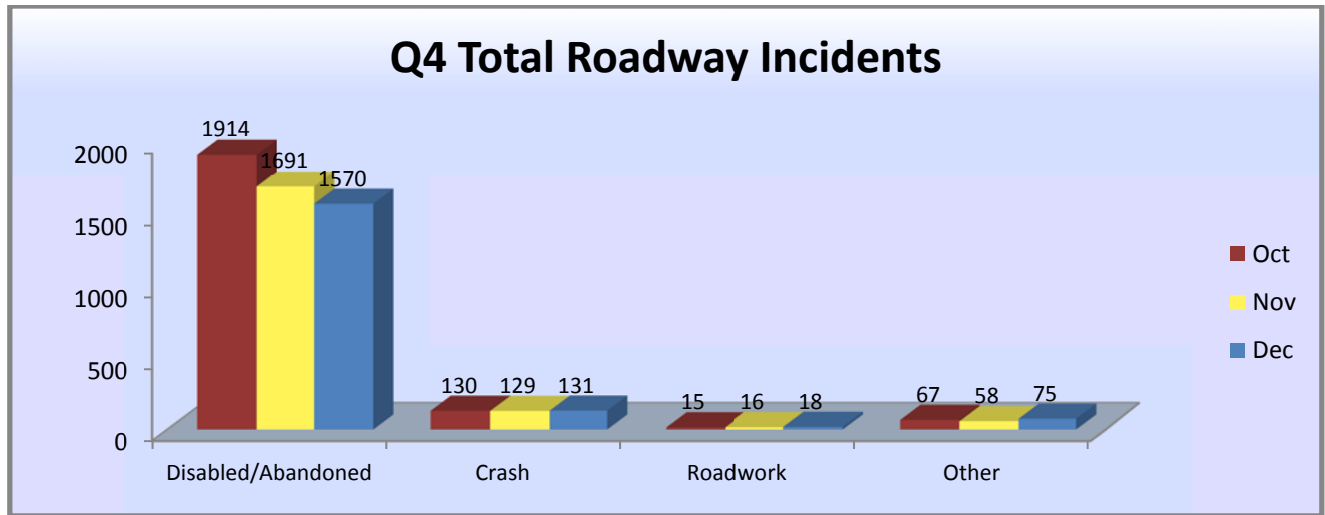
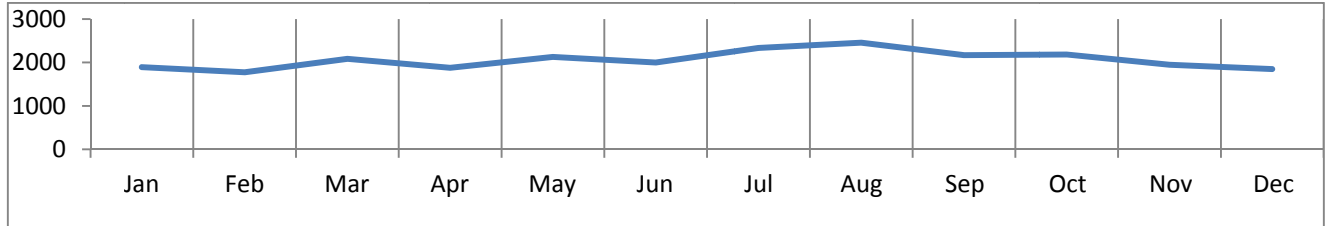


Total Incidents Managed This Quarter – 5976

Total Incidents Managed YTD – 24,690



Note: Other includes Vehicle Fire, Debris, Jackknifed Tractor Trailer, Police/Medical/Fire Activity, AMBER Alert, & Weather incidents.

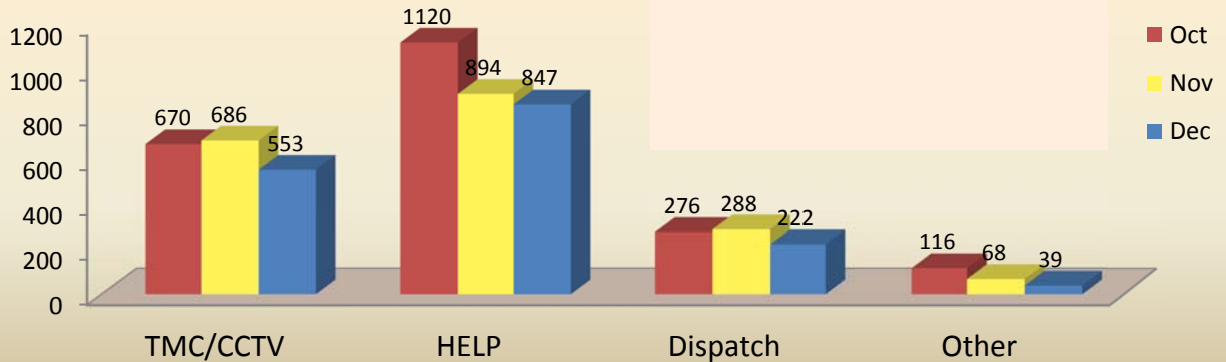
Events Affecting Traffic This Quarter:

- Ongoing construction on I-240 between SR385 and Walnut Grove.
- Continuing construction at the I-55/Mallory intersection.
- Traffic delays on I-55N due to ramp improvement work at Crump Blvd.
- 10/20 – Fatality crash involving a motorcycle on I-55N at MM 6.
- 11/7 – Tractor-trailer overturned I-40E at Sam Cooper; ramp closed for several hours.
- 12/7 & 12/8 – Snow on roadways, ice on bridges.
- 12/19 – Overturned tractor-trailer on I-40 at MM 11; tractor-trailer crash on I-40 at MM 6 with several lanes blocked.
- 12/31 – Liberty Bowl football game.

Incident Hot Spots For The Quarter

Location	Mile Marker Range	Total Incidents
I-240 Sam Cooper - Poplar	12-15	188
I-240 Poplar - SR385	15-17	165
I-40 Sam Cooper - Germantown Pkwy.	11-16	164
I-240 SR385 - Lamar	17-21	86
I-55 Brooks - S. Parkway	5-10	77

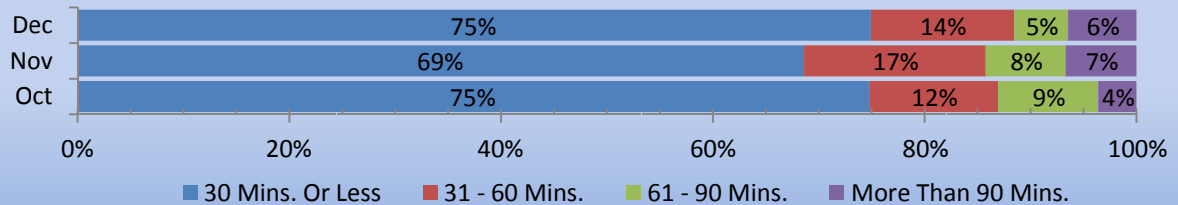
Q4 Incidents by Detection Source



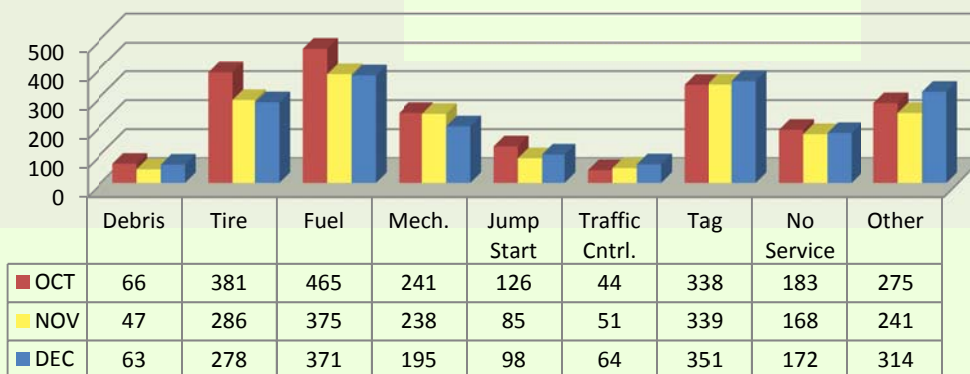
Quarterly DMS Usage

	Oct	Nov	Dec	Total
Total messages posted	554	467	738	1759
Average messages per sign	13.2	11.1	17.6	41.9
Average percent on time	7.4	8.7	7.8	8.0

Clearance Times



HELP Services Provided



Note: Other includes Extinguish Fire, First Aid, Absorbent, Relocate Vehicle, Fluids, Called Wrecker, Secure Load, Phone Call, Directions, Transported, Unable to Locate, Wrecker Towed, Notified TDOT, Notified Law Enforcement, & Miscellaneous.