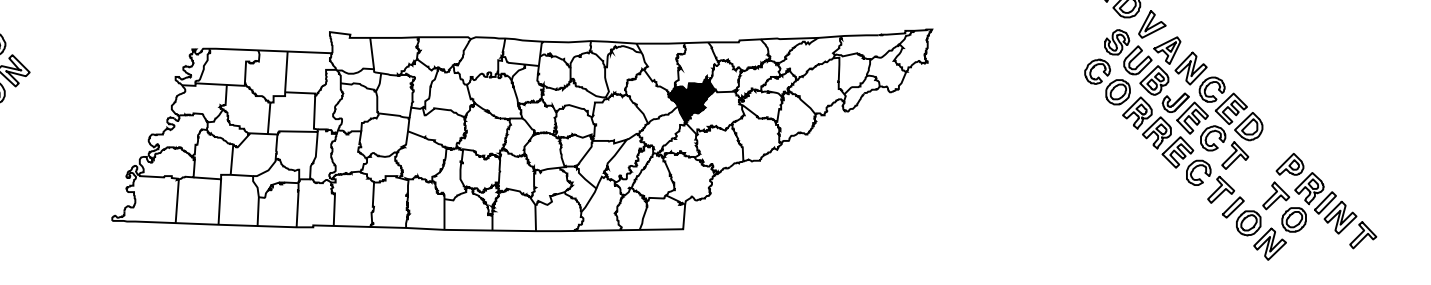


- LEGEND**
- ✦ SCHOOL
 - ✦ CHURCH
 - ✦ CHURCH WITH CEMETERY
 - ✦ CEMETERY
 - ✦ HOSPITAL
 - ✦ POST OFFICE
 - ✦ HIGHWAY PATROL STATION
 - ✦ CITY HALL OR COMMUNITY CENTER
 - ✦ MONUMENT
 - ✦ AIRPORT, COMPLETE FACILITIES
 - ✦ AIRPORT, LIMITED FACILITIES
 - ✦ LANDING AREA OR STRIP
 - ✦ POWER PLANT
 - ✦ WEIGHT STATION
 - ✦ HIGHWAY GARAGE (S-STATE, C-COUNTY)
 - ✦ TRIANGULATION STATION
 - ✦ OBSERVATION OR LOOKOUT TOWER
 - ✦ COUNTY SEAT
 - ✦ OTHER CITIES AND VILLAGES
 - ✦ RADIO OR TELEVISION STATION
 - ✦ POINT OF INTEREST
 - ✦ DOT TO INDICATE LOCATION OF ANY CULTURAL FEATURE OUT OF PLACE
 - ✦ INTERSTATE HIGHWAY MARKER
 - ✦ U.S. NUMBERED HIGHWAY MARKER
 - ✦ STATE HIGHWAY MARKER
 - ✦ FEDERAL AID PRIMARY SYSTEM
 - ✦ STATE HIGHWAY MARKER
 - ✦ FEDERAL AID SECONDARY SYSTEM
 - ✦ PROMINENT PEAK WITH ELEVATION
 - ✦ LAKE WITH DAM
 - ✦ RESERVOIR, POND OR LAKE
 - ✦ LEVEE OR DYKE
 - ✦ DRAINAGE CANAL
 - ✦ NARROW STREAM
 - ✦ WIDE STREAM
 - ✦ DAM WITH LOCK
 - ✦ HEAD OF NAVIGATION
 - ✦ NAVIGABLE STREAM
 - ✦ GRADE CROSSING
 - ✦ OVERPASS-ROAD ABOVE
 - ✦ UNDERPASS-ROAD BELOW
 - ✦ RAILROAD TUNNEL
 - ✦ GRADE SEPARATION
 - ✦ FORD
 - ✦ LOW WATER BRIDGE
 - ✦ FREE FERRY OR TOLL FERRY
 - ✦ HIGHWAY BRIDGE-OVER 20 FEET
 - ✦ HIGHWAY BRIDGE-LONG RIVER CROSSING
 - ✦ IC-CONCRETE, S-STEEL, W-WOOD
 - ✦ PRIMITIVE OR UNIMPROVED ROAD
 - ✦ GRADED AND DRAINED, SOIL, GRAVEL OR STONE SURFACED ROAD
 - ✦ PAVED ROAD
 - ✦ PAVED HIGHWAY OR ROAD
 - ✦ DIVIDED ROADWAY
 - ✦ DISTANCE IN MILES BETWEEN DESIGNATED POINTS
 - ✦ FULL CONTROL OF ACCESS
 - ✦ NPS NATIONAL PARK SERVICE HIGHWAY
 - ✦ HIGHWAY INTERCHANGE
 - ✦ COUNTY LINE
 - ✦ STATE LINE
 - ✦ MONUMENTED BOUNDARY MARKER
 - ✦ INCORPORATED CITY BOUNDARY
 - ✦ RESERVATION BOUNDARY
 - ✦ PAVED OR GRAVEL PUBLIC ROAD MAINTENANCE NOT CITY OR COUNTY RESPONSIBILITY

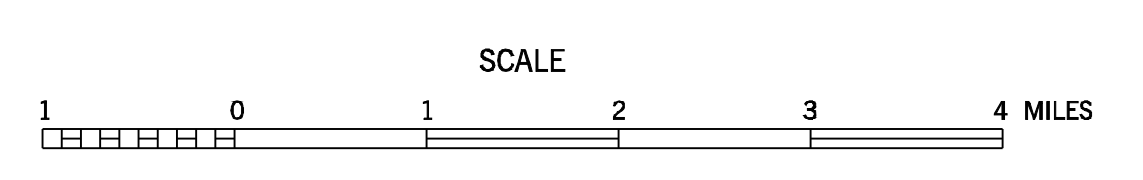
LEGEND
 STATION NUMBER ● 43
 A. A. D. T. (ANNUAL AVERAGE DAILY TRAFFIC)

NOTES
 HIGHEST STATION NUMBER FOR THIS COUNTY 193
 ATR-38 (990)
STATION NUMBERS ON ANDERSON COUNTY MAP
 5-7-8-10-11-13-14-15-16-18-19-20-21-22-23-24-26-27-28-
 29-30-31-32-37-38-39-40-41-47-48-49-50-51-53-55-58-
 59-60-61-62-65-66-67-68-69-84-86-87-88-106-107-108-
 109-110-111-118-119-122-123-125-126-138-172-173-174



2010 TRAFFIC MAP
ANDERSON COUNTY
 TENNESSEE

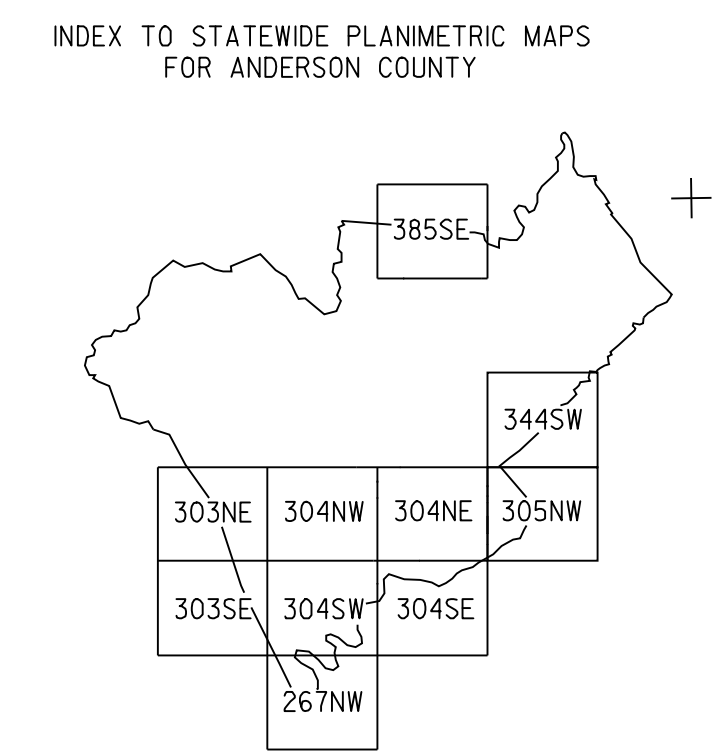
PREPARED BY THE
 TENNESSEE DEPARTMENT OF TRANSPORTATION
 LONG RANGE AND PROJECT PLANNING DIVISIONS
 IN COOPERATION WITH THE
 U.S. DEPARTMENT OF TRANSPORTATION
 FEDERAL HIGHWAY ADMINISTRATION



2010

MAP RECORD
 FIELD DATA OBTAINED IN 2002
 FIELD EXAMINATION MADE IN

REVISIONS	DATE



LAMBERT CONFORMAL CONIC PROJECTION
 20,000 FOOT GRID TICKS BASED ON THE
 TENNESSEE COORDINATE SYSTEM
 1927 NORTH AMERICAN DATUM

POPULATION OF ANDERSON COUNTY
 71,330 (2000 CENSUS)

AUTHORIZATION NO. 4091004000

COUNTY	STATION NUMBER	YEAR	AADT
1	000005	2010	359
1	000007	2010	1919
1	000008	2010	3568
1	000010	2010	1880
1	000011	2010	8238
1	000013	2010	826
1	000014	2010	5933
1	000015	2010	918
1	000016	2010	665
1	000018	2010	1248
1	000019	2010	2214
1	000020	2010	2664
1	000021	2010	474
1	000022	2010	5909
1	000023	2010	3029
1	000024	2010	1167
1	000026	2010	1777
1	000027	2010	393
1	000028	2010	764
1	000029	2010	1364
1	000030	2010	1295
1	000031	2010	550
1	000032	2010	1023
1	000035	2010	27309
1	000036	2010	9470
1	000037	2010	598
1	000038	2010	791
1	000039	2010	972
1	000040	2010	633
1	000041	2010	487
1	000042	2010	3076
1	000043	2010	16762
1	000044	2010	18306
1	000045	2010	1900
1	000046	2010	951
1	000047	2010	1827
1	000048	2010	1286
1	000049	2010	14751
1	000050	2010	4146
1	000051	2010	16301
1	000053	2010	15095
1	000055	2010	1676
1	000056	2010	13974
1	000057	2010	19263
1	000058	2010	6151
1	000059	2010	844
1	000060	2010	4535
1	000061	2010	1111
1	000062	2010	4485
1	000063	2010	17962
1	000065	2010	1650

1	000066	2010	917
1	000067	2010	2716
1	000068	2010	20313
1	000069	2010	3988
1	000070	2010	25223
1	000071	2010	26687
1	000073	2010	33511
1	000074	2010	8919
1	000076	2010	2475
1	000077	2010	20752
1	000078	2010	19260
1	000079	2010	11072
1	000080	2010	17136
1	000081	2010	2214
1	000082	2010	8238
1	000083	2010	5127
1	000084	2010	33224
1	000086	2010	39250
1	000087	2010	24779
1	000088	2010	180
1	000089	2010	6067
1	000090	2010	7385
1	000091	2010	3404
1	000092	2010	6991
1	000093	2010	2151
1	000094	2010	6404
1	000095	2010	9119
1	000096	2010	3281
1	000097	2010	7637
1	000098	2010	1858
1	000099	2010	1056
1	000100	2010	2202
1	000101	2010	1812
1	000102	2010	29540
1	000103	2010	12076
1	000106	2010	807
1	000107	2010	1880
1	000108	2010	676
1	000109	2010	829
1	000110	2010	1020
1	000111	2010	10269
1	000113	2010	707
1	000115	2010	28428
1	000116	2010	3292
1	000117	2010	234
1	000118	2010	1261
1	000119	2010	1260
1	000122	2010	355
1	000123	2010	410
1	000125	2010	880
1	000126	2010	1079
1	000127	2010	2149

1	000128	2010	68
1	000129	2010	1692
1	000130	2010	1668
1	000132	2010	943
1	000133	2010	1630
1	000134	2010	99
1	000135	2010	1446
1	000136	2010	442
1	000137	2010	786
1	000138	2010	877
1	000139	2010	697
1	000141	2010	1441
1	000142	2010	2484
1	000143	2010	2038
1	000144	2010	1225
1	000145	2010	1260
1	000146	2010	1844
1	000148	2010	2237
1	000149	2010	6050
1	000150	2010	1904
1	000151	2010	4476
1	000152	2010	13667
1	000153	2010	4612
1	000154	2010	3902
1	000155	2010	3469
1	000156	2010	5421
1	000157	2010	2346
1	000158	2010	5007
1	000159	2010	1777
1	000160	2010	2484
1	000161	2010	4277
1	000162	2010	3738
1	000163	2010	1783
1	000164	2010	391
1	000165	2010	2606
1	000166	2010	1890
1	000171	2010	22109
1	000172	2010	16264
1	000173	2010	675
1	000174	2010	427
1	000175	2010	3699
1	000176	2010	1463
1	000177	2010	296
1	000178	2010	731
1	000179	2010	630
1	000180	2010	2635
1	000181	2010	2018
1	000182	2010	1643
1	000183	2010	5642
1	000184	2010	1975
1	000186	2010	1420
1	000187	2010	3650

1	000188	2010	3222
1	000189	2010	2162
1	000190	2010	5073
1	000191	2010	4557
1	000192	2010	3400
1	000193	2010	9668
1	000990	2010	42258