

MAP RECORD	
FIELD DATA OBTAINED IN 1986	
FIELD EXAMINATION MADE IN 1988	
REVISIONS	
FEATURE	DATE
UPDATED USGS INFORMATION PROVIDED BY LOCAL OFFICIALS	2003

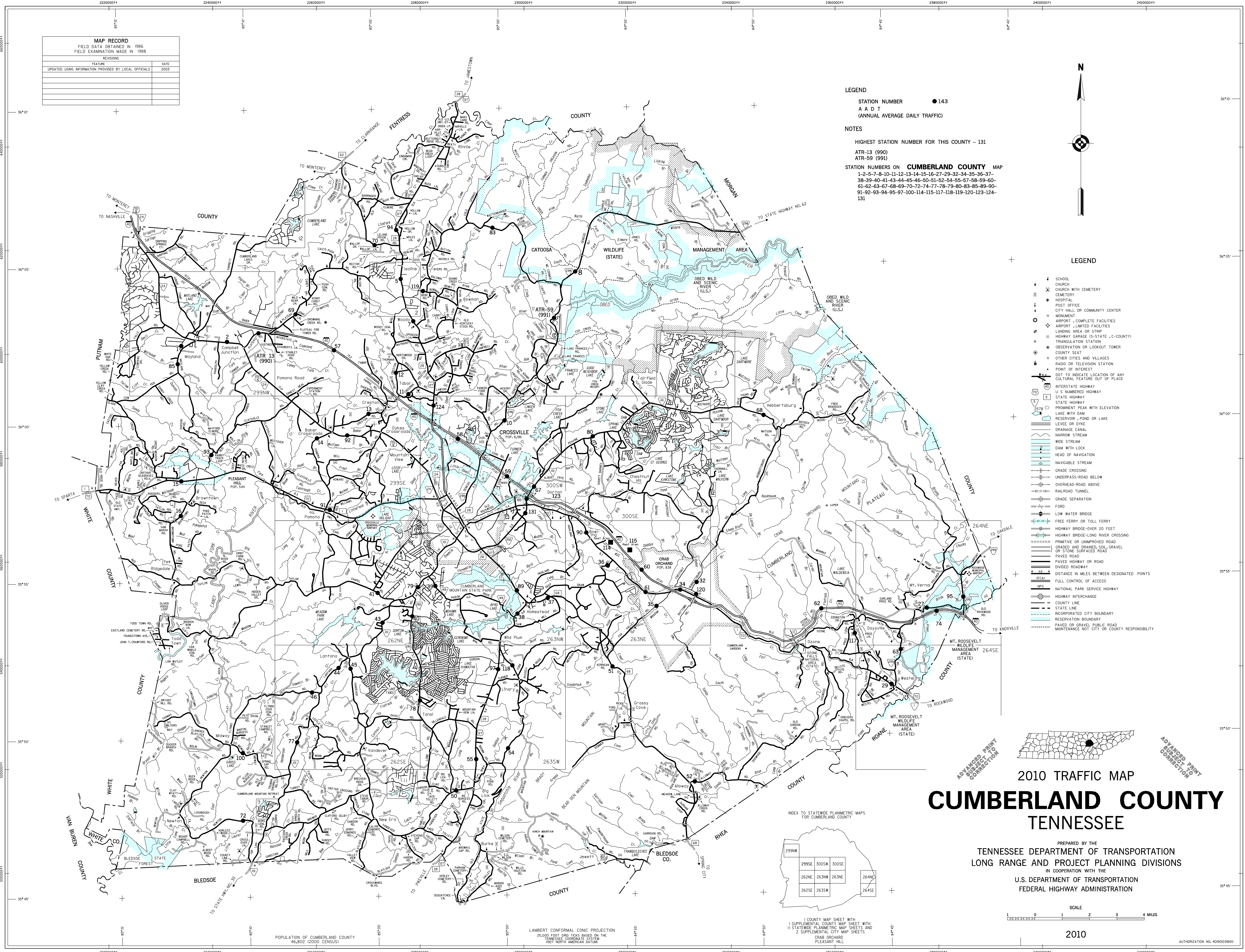
LEGEND
 STATION NUMBER ● 143
 A A D T
 (ANNUAL AVERAGE DAILY TRAFFIC)

NOTES
 HIGHEST STATION NUMBER FOR THIS COUNTY - 131
 ATR-13 (990)
 ATR-59 (991)
 STATION NUMBERS ON CUMBERLAND COUNTY MAP
 1-2-5-7-8-10-11-12-13-14-15-16-27-29-32-34-35-36-37-
 38-39-40-41-43-44-45-46-50-51-52-54-55-57-58-59-60-
 61-62-63-67-68-69-70-72-74-77-78-79-80-83-85-89-90-
 91-92-93-94-95-97-100-114-115-117-118-119-120-123-124-
 131



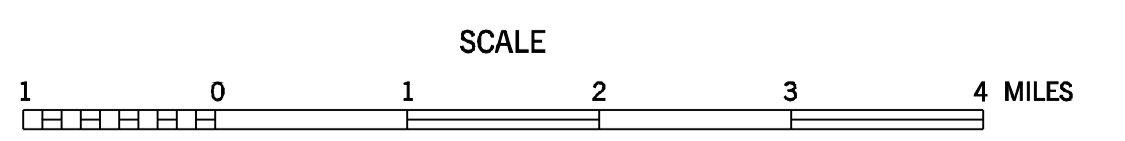
LEGEND

- SCHOOL
- ✕ CHURCH WITH CEMETERY
- ☠ CEMETERY
- ✚ HOSPITAL
- ✉ POST OFFICE
- 🏛️ CITY HALL OR COMMUNITY CENTER
- 🗿 MONUMENT
- ✈️ AIRPORT - COMPLETE FACILITIES
- ✈️ AIRPORT - LIMITED FACILITIES
- 🛤️ LANDING AREA OR STRIP
- 🚗 HIGHWAY GARAGE (S-STATE, C-COUNTY)
- 📡 TRIANGULATION STATION
- 📡 OBSERVATION OR LOOKOUT TOWER
- 🏛️ COUNTY SEAT
- 🏘️ OTHER CITIES AND VILLAGES
- 📻 RADIO OR TELEVISION STATION
- 📍 POINT OF INTEREST
- ⋯ DOT TO INDICATE LOCATION OF ANY CULTURAL FEATURE OUT OF PLACE
- 🛣️ INTERSTATE HIGHWAY
- 🛣️ U S NUMBERED HIGHWAY
- 🛣️ STATE HIGHWAY
- 🛣️ STATE HIGHWAY
- 🛣️ PROMINENT PEAK WITH ELEVATION
- 🌊 LAKE WITH DAM
- 🌊 RESERVOIR, POND OR LAKE
- 🌊 LEVEE OR DYKE
- 🌊 DRAINAGE CANAL
- 🌊 NARROW STREAM
- 🌊 WIDE STREAM
- 🌊 DAM WITH LOCK
- 🌊 HEAD OF NAVIGATION
- 🌊 NAVIGABLE STREAM
- 🛤️ GRADE CROSSING
- 🛤️ UNDERPASS-ROAD BELOW
- 🛤️ OVERHEAD-ROAD ABOVE
- 🛤️ RAILROAD TUNNEL
- 🛤️ GRADE SEPARATION
- 🛤️ FORD
- 🛤️ LOW WATER BRIDGE
- 🛤️ FREE FERRY OR TOLL FERRY
- 🛤️ HIGHWAY BRIDGE-OVER 20 FEET
- 🛤️ HIGHWAY BRIDGE-LONG RIVER CROSSING
- 🛤️ PRIMITIVE OR UNIMPROVED ROAD
- 🛤️ GRADED AND DRAINED, SOIL, GRAVEL OR STONE SURFACED ROAD
- 🛤️ PAVED ROAD
- 🛤️ PAVED HIGHWAY OR ROAD
- 🛤️ DIVIDED ROADWAY
- 🛤️ DISTANCE IN MILES BETWEEN DESIGNATED POINTS
- 🛤️ FULL CONTROL OF ACCESS
- 🛤️ NATIONAL PARK SERVICE HIGHWAY
- 🛤️ HIGHWAY INTERCHANGE
- 🛤️ COUNTY LINE
- 🛤️ STATE LINE
- 🛤️ INCORPORATED CITY BOUNDARY
- 🛤️ MAINTENANCE BOUNDARY
- 🛤️ PAVED OR GRAVEL PUBLIC ROAD
- 🛤️ MAINTENANCE NOT CITY OR COUNTY RESPONSIBILITY



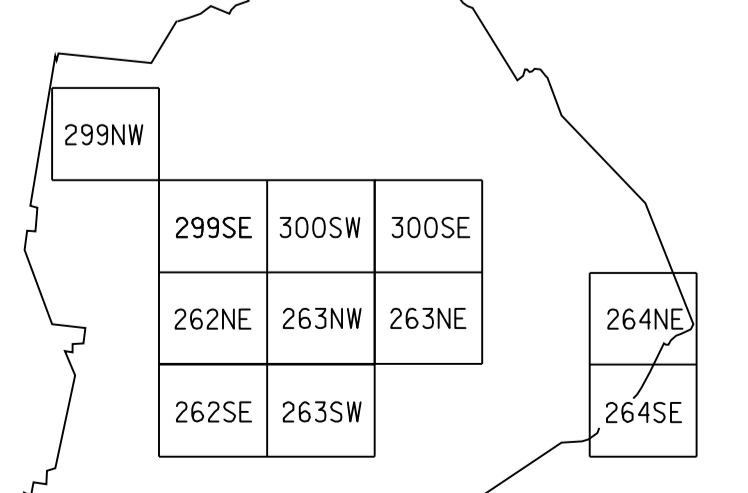
2010 TRAFFIC MAP
CUMBERLAND COUNTY
 TENNESSEE

PREPARED BY THE
 TENNESSEE DEPARTMENT OF TRANSPORTATION
 LONG RANGE AND PROJECT PLANNING DIVISIONS
 IN COOPERATION WITH THE
 U.S. DEPARTMENT OF TRANSPORTATION
 FEDERAL HIGHWAY ADMINISTRATION



2010

INDEX TO STATEWIDE PLANIMETRIC MAPS FOR CUMBERLAND COUNTY



POPULATION OF CUMBERLAND COUNTY
 46,802 (2000 CENSUS)

LAMBERT CONFORMAL CONIC PROJECTION
 20,000 FOOT GRID TICKS BASED ON THE
 TENNESSEE COORDINATE SYSTEM
 1927 NORTH AMERICAN DATUM

1 COUNTY MAP SHEET WITH
 1 SUPPLEMENTAL COUNTY MAP SHEET WITH
 11 STATEWIDE PLANIMETRIC MAP SHEETS AND
 2 SUPPLEMENTAL CITY MAP SHEETS
 CRAB ORCHARD
 PLEASANT HILL

AUTHORIZATION NO. 409038300

COUNTY	STATION NUMBER	YEAR	AADT
18	000001	2010	646
18	000002	2010	3720
18	000005	2010	6443
18	000007	2010	8380
18	000008	2010	760
18	000010	2010	2689
18	000011	2010	706
18	000012	2010	502
18	000013	2010	569
18	000014	2010	1181
18	000015	2010	3136
18	000016	2010	1039
18	000019	2010	12313
18	000020	2010	6806
18	000022	2010	8550
18	000024	2010	3989
18	000025	2010	9896
18	000026	2010	15287
18	000027	2010	185
18	000029	2010	1773
18	000032	2010	450
18	000034	2010	2279
18	000035	2010	1060
18	000036	2010	475
18	000037	2010	4772
18	000038	2010	6574
18	000039	2010	1570
18	000040	2010	6870
18	000041	2010	1934
18	000043	2010	4891
18	000044	2010	2430
18	000045	2010	1620
18	000046	2010	486
18	000050	2010	625
18	000051	2010	3029
18	000052	2010	381
18	000054	2010	100
18	000055	2010	2648
18	000057	2010	29630
18	000058	2010	31759
18	000059	2010	35946
18	000060	2010	28626
18	000061	2010	2039
18	000062	2010	28829
18	000063	2010	1254
18	000065	2010	17021
18	000066	2010	11584
18	000067	2010	15690
18	000068	2010	453
18	000069	2010	1252
18	000070	2010	755

18	000071	2010	16371
18	000072	2010	168
18	000074	2010	28961
18	000075	2010	24614
18	000077	2010	1618
18	000078	2010	1768
18	000079	2010	12940
18	000080	2010	12608
18	000081	2010	7222
18	000082	2010	6647
18	000083	2010	134
18	000084	2010	5400
18	000085	2010	1067
18	000086	2010	2112
18	000087	2010	3268
18	000089	2010	11489
18	000090	2010	2753
18	000091	2010	5764
18	000092	2010	4218
18	000093	2010	452
18	000094	2010	5359
18	000095	2010	1454
18	000097	2010	4080
18	000098	2010	13040
18	000099	2010	2083
18	000100	2010	184
18	000103	2010	3044
18	000104	2010	2257
18	000105	2010	17171
18	000106	2010	4808
18	000107	2010	8550
18	000108	2010	18140
18	000109	2010	1229
18	000111	2010	8095
18	000112	2010	1727
18	000113	2010	6056
18	000114	2010	1035
18	000115	2010	1181
18	000116	2010	10701
18	000117	2010	363
18	000118	2010	1184
18	000119	2010	1010
18	000120	2010	2131
18	000121	2010	6327
18	000122	2010	4269
18	000123	2010	9409
18	000124	2010	12941
18	000125	2010	12824
18	000126	2010	10361
18	000127	2010	2938
18	000128	2010	14227
18	000129	2010	17576

18	000130	2010	5304
18	000131	2010	5600
18	000990	2010	2330
18	000991	2010	924