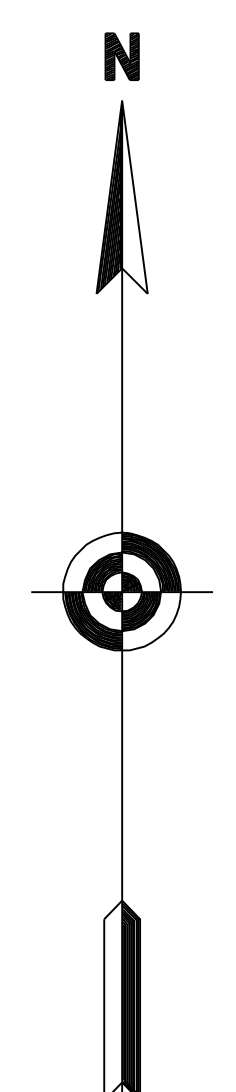


- LEGEND**
- SCHOOL
  - CHURCH
  - CHURCH WITH CEMETERY
  - CEMETERY
  - HOSPITAL
  - POST OFFICE
  - CITY HALL OR COMMUNITY CENTER
  - MONUMENT
  - AIRPORT - COMPLETE FACILITIES
  - AIRPORT - LIMITED FACILITIES
  - LANDING AREA OR STRIP
  - HIGHWAY GARAGE (S-STATE, C-COUNTY)
  - TRIANGULATION STATION
  - OBSERVATION OR LOOKOUT TOWER
  - COUNTY SEAT
  - OTHER CITIES AND VILLAGES
  - RADIO OR TELEVISION STATION
  - POINT OF INTEREST
  - DOT TO INDICATE LOCATION OF ANY CULTURAL FEATURE OUT OF PLACE
  - INTERSTATE HIGHWAY
  - U S NUMBERED HIGHWAY
  - STATE HIGHWAY
  - PROMINENT PEAK WITH ELEVATION
  - LAKE WITH DAM
  - RESERVOIR - POND OR LAKE
  - LEVEE OR DYKE
  - DRAINAGE CANAL
  - NARROW STREAM
  - WIDE STREAM
  - DAM WITH LOCK
  - HEAD OF NAVIGATION
  - NAVIGABLE STREAM
  - GRADE CROSSING
  - UNDERPASS-ROAD BELOW
  - OVERHEAD-ROAD ABOVE
  - RAILROAD TUNNEL
  - GRADE SEPARATION
  - FORD
  - LOW WATER BRIDGE
  - FREE FERRY OR TOLL FERRY
  - HIGHWAY BRIDGE-OVER 20 FEET
  - HIGHWAY BRIDGE-LONG RIVER CROSSING
  - PRIMITIVE OR UNIMPROVED ROAD
  - GRADED AND DRAINED, SOL, GRAVEL OR STONE SURFACED ROAD
  - PAVED ROAD
  - PAVED HIGHWAY OR ROAD
  - DIVIDED ROADWAY
  - DISTANCE IN MILES BETWEEN DESIGNATED POINTS
  - FULL CONTROL OF ACCESS
  - NATIONAL PARK SERVICE HIGHWAY
  - HIGHWAY INTERCHANGE
  - COUNTY LINE
  - STATE LINE
  - INCORPORATED CITY BOUNDARY
  - RESERVATION BOUNDARY
  - PAVED OR GRAVEL PUBLIC ROAD
  - MAINTENANCE NOT CITY OR COUNTY RESPONSIBILITY



**LEGEND**

STATION NUMBER ● 16

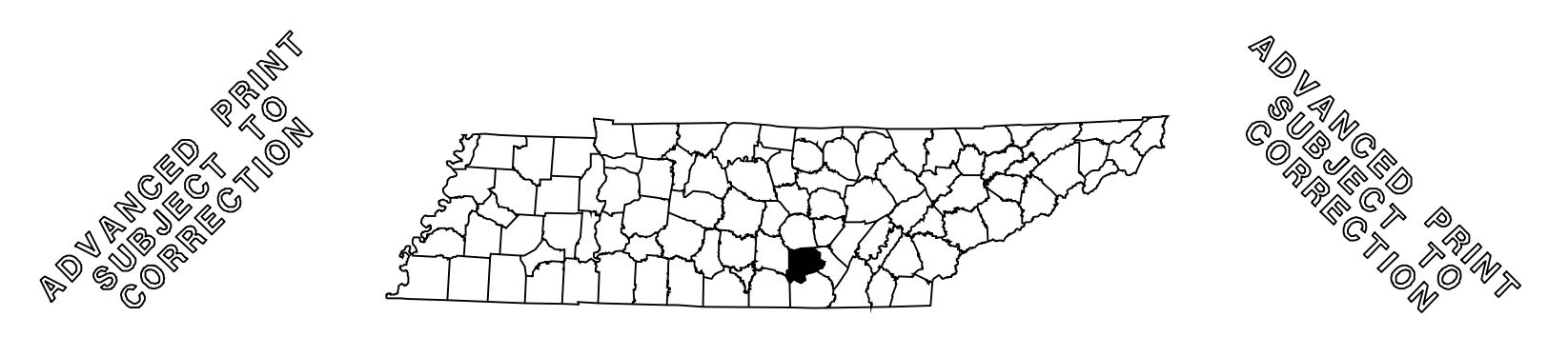
**NOTES**

HIGHEST STATION NUMBER FOR THIS COUNTY - 48

ATR-10 (990)

STATION NUMBERS ON **GRUNDY COUNTY** MAP

1-5-6-7-8-9-10-11-12-13-14-15-16-18-19-20-22-23-24-25-26-27-29-30-32-34-36-38-40-43-44-45-46-47-48

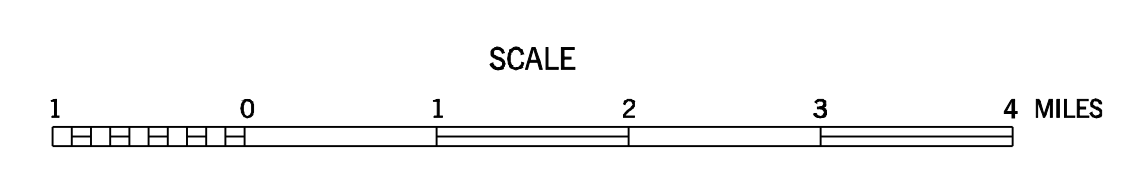


# 2010 TRAFFIC MAP

## GRUNDY COUNTY

### TENNESSEE

PREPARED BY THE  
**TENNESSEE DEPARTMENT OF TRANSPORTATION**  
 LONG RANGE AND PROJECT PLANNING DIVISIONS  
 IN COOPERATION WITH THE  
**U.S. DEPARTMENT OF TRANSPORTATION**  
 FEDERAL HIGHWAY ADMINISTRATION



2010

AUTHORIZATION NO. 409005300

**MAP RECORD**

FIELD DATA OBTAINED IN 2004

FIELD EXAMINATION MADE IN

REVISIONS	DATE

LAMBERT CONFORMAL CONIC PROJECTION  
 20,000 FOOT GRID TICKS BASED ON THE  
 TENNESSEE COORDINATE SYSTEM  
 WEST NORTH AMERICAN DATUM

POPULATION OF GRUNDY COUNTY  
 14,332 (2000 CENSUS)

1 COUNTY MAP SHEET WITH  
 4 STATEWIDE PLANIMETRIC MAP SHEETS, AND  
 6 SUPPLEMENTAL CITY MAP SHEETS

ALTAMONT  
 BEERSHEBA SPRINGS  
 COLLMONT  
 GRUETLI-LAGER  
 PALMER  
 TRACY CITY

COUNTY	STATION NUMBER	YEAR	AADT
31	000001	2010	908
31	000005	2010	770
31	000006	2010	2328
31	000007	2010	817
31	000008	2010	3256
31	000009	2010	1207
31	000010	2010	1009
31	000011	2010	1253
31	000012	2010	354
31	000013	2010	2222
31	000014	2010	4091
31	000015	2010	317
31	000016	2010	917
31	000018	2010	3850
31	000019	2010	3369
31	000020	2010	3697
31	000022	2010	3851
31	000023	2010	1275
31	000024	2010	1643
31	000025	2010	2732
31	000026	2010	2235
31	000027	2010	1078
31	000029	2010	165
31	000030	2010	160
31	000032	2010	696
31	000034	2010	5442
31	000036	2010	2815
31	000038	2010	483
31	000040	2010	2857
31	000043	2010	937
31	000044	2010	31992
31	000045	2010	1018
31	000046	2010	1092
31	000047	2010	255
31	000048	2010	940
31	000990	2010	4448