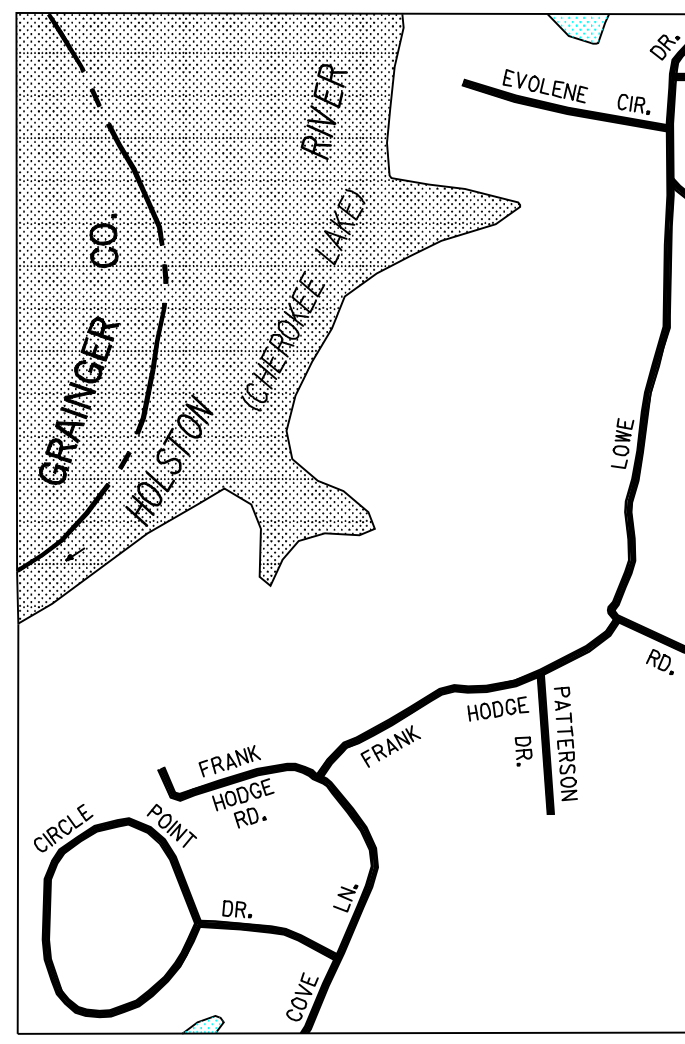
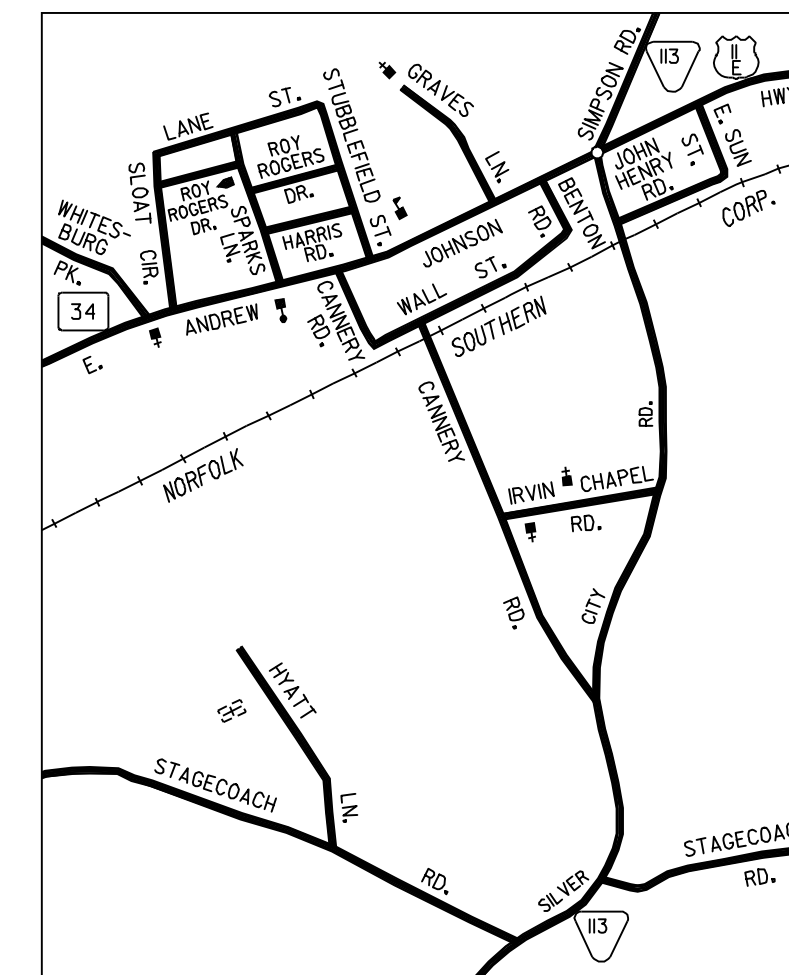


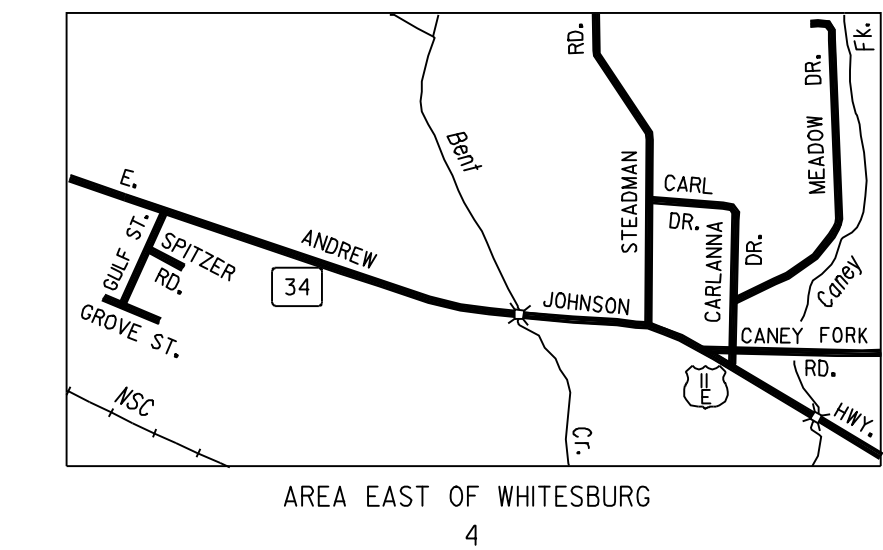
AREA S. W. OF PLEASANT VIEW
1



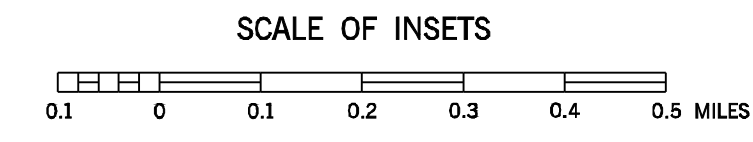
AREA N. W. OF PLEASANT VIEW
2



WHITESBURG
3



AREA EAST OF WHITESBURG
4

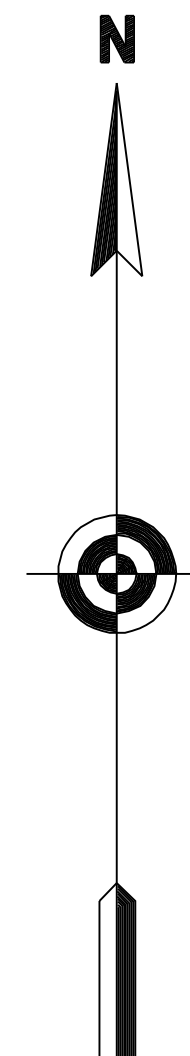


LEGEND

- SCHOOL
- CHURCH
- CHURCH WITH CEMETERY
- CEMETERY
- HOSPITAL
- POST OFFICE
- CITY HALL OR COMMUNITY CENTER
- MONUMENT
- AIRPORT - COMPLETE FACILITIES
- AIRPORT - LIMITED FACILITIES
- LANDING AREA OR STRIP
- HIGHWAY GARAGE (S-STATE, C-COUNTY)
- TRIANGULATION STATION
- OBSERVATION OR LOOKOUT TOWER
- COUNTY SEAT
- OTHER CITIES AND VILLAGES
- RADIO OR TELEVISION STATION
- POINT OF INTEREST
- DOT TO INDICATE LOCATION OF ANY CULTURAL FEATURE "OUT OF PLACE"
- INTERSTATE HIGHWAY
- U S NUMBERED HIGHWAY
- STATE HIGHWAY
- STATE HIGHWAY
- PROMINENT PEAK WITH ELEVATION
- LAKE WITH DAM
- RESERVOIR, POND OR LAKE
- LEVEE OR DYKE
- DRAINAGE CANAL
- NARROW STREAM
- WIDE STREAM
- DAM WITH LOCK
- HEAD OF NAVIGATION
- NAVIGABLE STREAM
- GRADE CROSSING
- UNDERPASS-ROAD BELOW
- OVERHEAD-ROAD ABOVE
- RAILROAD TUNNEL
- RAILROAD TUNNEL
- GRADE SEPARATION
- FORD
- LOW WATER BRIDGE
- FREE FERRY OR TOLL FERRY
- HIGHWAY BRIDGE-OVER 20 FEET
- HIGHWAY BRIDGE-LONG RIVER CROSSING
- PRIMITIVE OR UNIMPROVED ROAD
- GRADED AND DRAINED, SOIL, GRAVEL OR STONE SURFACED ROAD
- PAVED ROAD
- PAVED HIGHWAY OR ROAD
- DIVIDED ROADWAY
- DISTANCE IN MILES BETWEEN DESIGNATED POINTS
- IF/EA
- FULL CONTROL OF ACCESS
- NPS
- NATIONAL PARK SERVICE HIGHWAY
- HIGHWAY INTERCHANGE
- COUNTY LINE
- STATE LINE
- INCORPORATED CITY BOUNDARY
- RESERVATION BOUNDARY

LEGEND

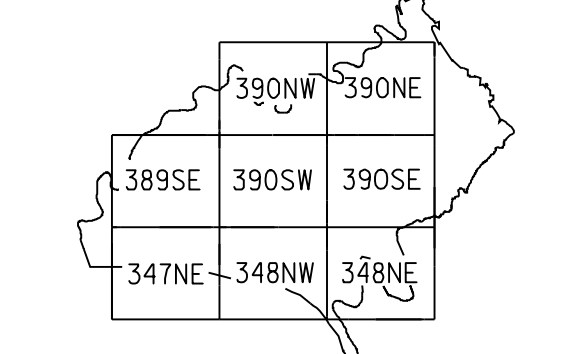
- STATION NUMBER ● 143
- A A D T (ANNUAL AVERAGE DAILY TRAFFIC)
- NOTES
- HIGHEST STATION NUMBER FOR THIS COUNTY - 156
- STATION NUMBERS ON **HAMBLEN COUNTY MAP**
1-2-3-4-5-6-7-8-37-39-41-60-61-65-80-86-87-89-131-136



MAP RECORD
FIELD DATA OBTAINED IN 1989
FIELD EXAMINATION MADE IN 1996

REVISIONS	DATE
FEATURE	

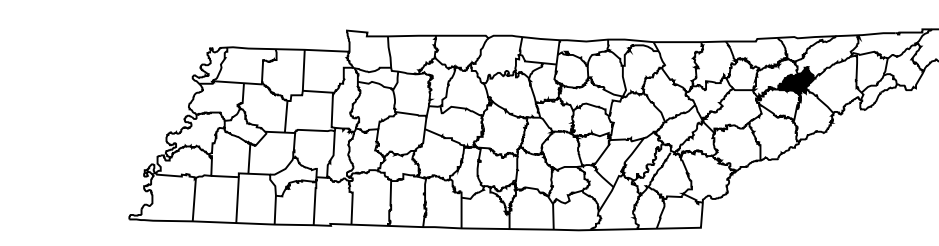
INDEX TO STATEWIDE PLANIMETRIC MAPS FOR HAMBLEN COUNTY



1 COUNTY MAP SHEET WITH 8 STATEWIDE PLANIMETRIC MAP SHEETS

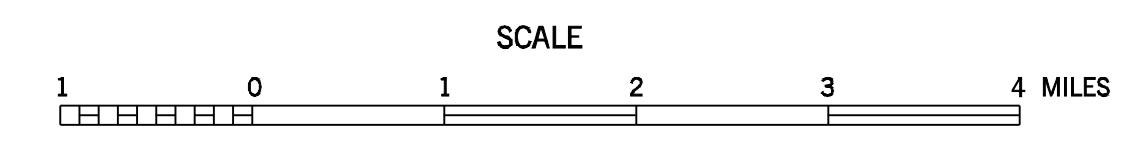
LAMBERT CONFORMAL CONIC PROJECTION
20,000 FOOT GRID TICKS BASED ON THE TENNESSEE COORDINATE SYSTEM 1927 NORTH AMERICAN DATUM

POPULATION OF HAMBLEN COUNTY
50,480 (1990 CENSUS)



2010 TRAFFIC MAP
HAMBLEN COUNTY
TENNESSEE

PREPARED BY THE
TENNESSEE DEPARTMENT OF TRANSPORTATION
LONG RANGE AND PROJECT PLANNING DIVISIONS
IN COOPERATION WITH THE
U.S. DEPARTMENT OF TRANSPORTATION
FEDERAL HIGHWAY ADMINISTRATION



2010

AUTHORIZATION NO. 4090963200

COUNTY	STATION NUMBER	YEAR	AADT
32	000001	2010	313
32	000002	2010	6048
32	000003	2010	1203
32	000004	2010	1343
32	000005	2010	551
32	000006	2010	3628
32	000007	2010	1398
32	000008	2010	830
32	000009	2010	1999
32	000010	2010	2930
32	000011	2010	2430
32	000012	2010	13138
32	000013	2010	6516
32	000014	2010	13819
32	000015	2010	4097
32	000017	2010	386
32	000018	2010	1229
32	000019	2010	18910
32	000020	2010	7150
32	000021	2010	3716
32	000022	2010	3085
32	000023	2010	888
32	000024	2010	23725
32	000025	2010	3852
32	000026	2010	2802
32	000027	2010	2914
32	000028	2010	4152
32	000029	2010	8845
32	000030	2010	16588
32	000031	2010	1882
32	000032	2010	2090
32	000033	2010	1440
32	000034	2010	2195
32	000035	2010	1404
32	000036	2010	1520
32	000037	2010	1869
32	000039	2010	520
32	000040	2010	571
32	000041	2010	576
32	000042	2010	755
32	000043	2010	189
32	000044	2010	1010
32	000045	2010	1247
32	000046	2010	591
32	000047	2010	12377
32	000048	2010	14838
32	000050	2010	9724
32	000051	2010	13296
32	000053	2010	3496
32	000054	2010	4189
32	000055	2010	17539

32	000056	2010	9533
32	000057	2010	936
32	000058	2010	16819
32	000059	2010	6489
32	000060	2010	42189
32	000061	2010	37905
32	000065	2010	8752
32	000066	2010	19746
32	000067	2010	11780
32	000068	2010	15188
32	000069	2010	24984
32	000070	2010	20266
32	000071	2010	18580
32	000072	2010	20181
32	000073	2010	1027
32	000074	2010	1146
32	000075	2010	1656
32	000076	2010	13750
32	000077	2010	637
32	000078	2010	363
32	000079	2010	908
32	000080	2010	400
32	000081	2010	1490
32	000082	2010	19235
32	000083	2010	15665
32	000084	2010	2887
32	000085	2010	2325
32	000086	2010	759
32	000087	2010	1178
32	000088	2010	981
32	000089	2010	3031
32	000090	2010	12060
32	000091	2010	26860
32	000093	2010	1551
32	000094	2010	775
32	000095	2010	2654
32	000096	2010	5450
32	000097	2010	3790
32	000098	2010	9240
32	000099	2010	6809
32	000100	2010	700
32	000101	2010	405
32	000103	2010	5906
32	000104	2010	4227
32	000105	2010	2615
32	000107	2010	3552
32	000108	2010	2840
32	000109	2010	3638
32	000111	2010	3925
32	000112	2010	18518
32	000113	2010	13924
32	000114	2010	745

32	000115	2010	3691
32	000116	2010	4681
32	000117	2010	1413
32	000118	2010	3319
32	000119	2010	867
32	000120	2010	2361
32	000121	2010	1431
32	000122	2010	8528
32	000123	2010	5430
32	000124	2010	14020
32	000125	2010	921
32	000126	2010	13343
32	000127	2010	1076
32	000128	2010	3136
32	000129	2010	3303
32	000130	2010	3033
32	000131	2010	563
32	000132	2010	8015
32	000133	2010	15854
32	000134	2010	4011
32	000135	2010	16863
32	000136	2010	7064
32	000137	2010	1000
32	000138	2010	13861
32	000139	2010	760
32	000140	2010	25965
32	000141	2010	20665
32	000142	2010	3520
32	000143	2010	30374
32	000144	2010	35980
32	000145	2010	3883
32	000146	2010	5055
32	000147	2010	3894
32	000148	2010	1766
32	000149	2010	6458
32	000150	2010	3536
32	000151	2010	4171
32	000152	2010	237
32	000153	2010	160
32	000154	2010	2727
32	000155	2010	587
32	000156	2010	3927