

- LEGEND**
- SCHOOL
  - ✠ CHURCH WITH CEMETERY
  - ✠ CEMETERY
  - ⚡ HOSPITAL
  - ✉ POST OFFICE
  - Ⓜ CITY HALL OR COMMUNITY CENTER
  - Ⓜ MONUMENT
  - ✈ AIRPORT - COMPLETE FACILITIES
  - ✈ AIRPORT - LIMITED FACILITIES
  - Ⓜ LANDING AREA OR STRIP
  - Ⓜ HIGHWAY GARAGE IS-STATE, C-COUNTY
  - Ⓜ TRANSLATION STATION
  - Ⓜ OBSERVATION OR LOOKOUT TOWER
  - Ⓜ COUNTY SEAT
  - Ⓜ OTHER CITIES AND VILLAGES
  - Ⓜ RADIO OR TELEVISION STATION
  - Ⓜ POINT OF INTEREST
  - Ⓜ DDT TO INDICATE LOCATION OF ANY CULTURAL FEATURES OUT OF PLACE
  - Ⓜ INTERSTATE HIGHWAY
  - Ⓜ U.S. NUMBERED HIGHWAY
  - Ⓜ STATE HIGHWAY
  - Ⓜ PROMINENT PEAK WITH ELEVATION
  - Ⓜ LAKE WITH DAM
  - Ⓜ RESERVOIR, POND OR LAKE
  - Ⓜ LEVEE OR DYKE
  - Ⓜ DRAINAGE CANAL
  - Ⓜ NARROW STREAM
  - Ⓜ WIDE STREAM
  - Ⓜ DAM WITH LOCK
  - Ⓜ HEAD OF NAVIGATION
  - Ⓜ NAVIGABLE STREAM
  - Ⓜ GRADE CROSSING
  - Ⓜ UNDERPASS-ROAD BELOW
  - Ⓜ OVERHEAD-ROAD ABOVE
  - Ⓜ RAILROAD TUNNEL
  - Ⓜ GRADE SEPARATION
  - Ⓜ FORD
  - Ⓜ LOW WATER BRIDGE
  - Ⓜ FREE FERRY OR TOLL FERRY
  - Ⓜ HIGHWAY BRIDGE-OVER 20 FEET
  - Ⓜ HIGHWAY BRIDGE-LONG RIVER CROSSING
  - Ⓜ PRIMITIVE OR UNIMPROVED ROAD
  - Ⓜ GRADED AND DRAINAGE, SOIL, GRAVEL OR STONE SURFACED ROAD
  - Ⓜ PAVED ROAD
  - Ⓜ PAVED HIGHWAY OR ROAD
  - Ⓜ DIVIDED ROADWAY
  - Ⓜ DISTANCE IN MILES BETWEEN DESIGNATED POINTS
  - Ⓜ IFCAL
  - Ⓜ FULL CONTROL OF ACCESS
  - Ⓜ NATIONAL PARK SERVICE HIGHWAY
  - Ⓜ HIGHWAY INTERCHANGE
  - Ⓜ COUNTY LINE
  - Ⓜ STATE LINE
  - Ⓜ INCORPORATED CITY BOUNDARY
  - Ⓜ RESERVATION BOUNDARY

**LEGEND**

● 143  
STATION NUMBER  
A A D T  
(ANNUAL AVERAGE DAILY TRAFFIC)

**NOTES**

HIGHEST STATION NUMBER FOR THIS COUNTY - 135  
ATR-9 (990)  
ATR-41 (991)

**STATION NUMBERS ON HAYWOOD COUNTY MAP**  
2-3-4-6-7-8-9-10-11-12-14-18-20-24-27-38-39-40-41-42-45-  
48-49-50-51-52-53-54-55-56-57-58-59-60-61-62-63-64-65-  
74-75-76-78-83-87-88-91-92-94-97-98-99-100-101-102-103-  
126-127-129

**MAP RECORD**

FIELD DATA OBTAINED IN 1999  
FIELD EXAMINATION MADE IN 2001

REVISIONS	DATE

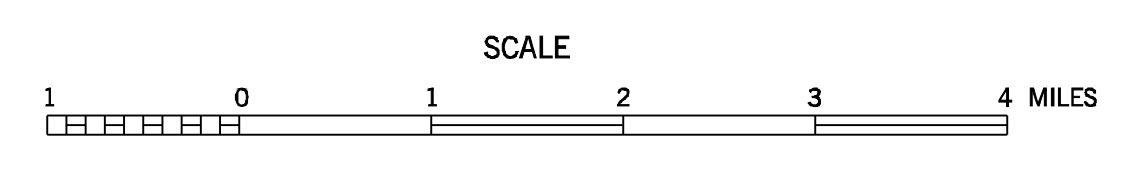
1 COUNTY MAP SHEET WITH  
2 SUPPLEMENTAL CITY MAP SHEETS  
BROWNSVILLE  
STANTON

LAMBERT CONFORMAL CONIC PROJECTION  
2400 FOOT GRID TICS BASED ON THE  
TENNESSEE COORDINATE SYSTEM  
1983 NORTH AMERICAN DATUM

POPULATION OF HAYWOOD COUNTY  
(1979 (2000 CENSUS))

# 2010 TRAFFIC MAP HAYWOOD COUNTY TENNESSEE

PREPARED BY THE  
TENNESSEE DEPARTMENT OF TRANSPORTATION  
LONG RANGE AND PROJECT PLANNING DIVISIONS  
IN COOPERATION WITH THE  
U.S. DEPARTMENT OF TRANSPORTATION  
FEDERAL HIGHWAY ADMINISTRATION



2010

AUTHORIZATION NO. 409003800

COUNTY	STATION NUMBER	YEAR	AADT
38	000002	2010	765
38	000003	2010	163
38	000004	2010	297
38	000006	2010	638
38	000007	2010	280
38	000008	2010	284
38	000009	2010	375
38	000010	2010	966
38	000011	2010	345
38	000012	2010	3851
38	000014	2010	260
38	000018	2010	267
38	000020	2010	243
38	000024	2010	220
38	000026	2010	3085
38	000027	2010	543
38	000028	2010	2440
38	000029	2010	996
38	000030	2010	4063
38	000031	2010	2420
38	000032	2010	5300
38	000033	2010	1728
38	000034	2010	5848
38	000037	2010	8966
38	000038	2010	243
38	000039	2010	5245
38	000040	2010	479
38	000041	2010	476
38	000042	2010	166
38	000045	2010	317
38	000048	2010	782
38	000049	2010	2169
38	000050	2010	1897
38	000051	2010	3170
38	000052	2010	290
38	000053	2010	459
38	000054	2010	77
38	000055	2010	534
38	000056	2010	436
38	000057	2010	1334
38	000058	2010	646
38	000059	2010	1813
38	000060	2010	35825
38	000061	2010	35606
38	000062	2010	36019
38	000063	2010	26502
38	000064	2010	676
38	000065	2010	38869
38	000066	2010	6430
38	000067	2010	7805
38	000069	2010	10536

38	000070	2010	7001
38	000071	2010	9146
38	000072	2010	4761
38	000073	2010	4760
38	000074	2010	202
38	000075	2010	2417
38	000076	2010	347
38	000078	2010	2334
38	000079	2010	5900
38	000081	2010	1868
38	000082	2010	4107
38	000083	2010	142
38	000084	2010	1642
38	000085	2010	1235
38	000087	2010	890
38	000088	2010	581
38	000091	2010	1364
38	000092	2010	1090
38	000094	2010	2246
38	000095	2010	9577
38	000096	2010	1758
38	000097	2010	907
38	000098	2010	32
38	000099	2010	140
38	000100	2010	276
38	000101	2010	122
38	000102	2010	635
38	000103	2010	91
38	000104	2010	2846
38	000105	2010	1263
38	000106	2010	3022
38	000107	2010	2235
38	000108	2010	2738
38	000109	2010	1560
38	000110	2010	1325
38	000111	2010	2710
38	000112	2010	2227
38	000113	2010	2659
38	000114	2010	3249
38	000115	2010	3227
38	000116	2010	2545
38	000117	2010	1301
38	000118	2010	1500
38	000119	2010	4530
38	000120	2010	1651
38	000121	2010	561
38	000122	2010	850
38	000123	2010	4219
38	000125	2010	2789
38	000126	2010	423
38	000127	2010	200
38	000128	2010	3600

38	000129	2010	693
38	000130	2010	7220
38	000131	2010	8443
38	000132	2010	2436
38	000133	2010	9519
38	000134	2010	508
38	000135	2010	871
38	000990	2010	2421
38	000991	2010	35613