

LEGEND

- SCHOOL
- CHURCH WITH CEMETERY
- CEMETERY
- HOSPITAL
- POST OFFICE
- CITY HALL OR COMMUNITY CENTER
- MONUMENT
- AIRPORT, COMPLETE FACILITIES
- AIRPORT, LIMITED FACILITIES
- LANDING AREA OR STRIP
- HIGHWAY GARAGE (S-STATE, C-COUNTY)
- TRIANGULATION STATION
- OBSERVATION OR LOOKOUT TOWER
- COUNTY SEAT
- OTHER CITIES AND VILLAGES
- RADIO OR TELEVISION STATION
- POINT OF INTEREST
- DOT TO INDICATE LOCATION OF ANY CULTURAL FEATURES OUT OF PLACE
- INTERSTATE HIGHWAY
- U.S. NUMBERED HIGHWAY
- STATE HIGHWAY
- PROMINENT PEAK WITH ELEVATION
- LAKE WITH DAM
- RESERVOIR, POND OR LAKE
- LEVEE OR DYKE
- DRAINAGE CANAL
- NARROW STREAM
- WIDE STREAM
- DAM WITH LOCK
- HEAD OF NAVIGATION
- NAVIGABLE STREAM
- GRADE CROSSING
- UNDERPASS-ROAD BELOW
- OVERHEAD-ROAD ABOVE
- RAILROAD TUNNEL
- GRADE SEPARATION
- FORD
- LOW WATER BRIDGE
- FREE FERRY OR TOLL FERRY
- HIGHWAY BRIDGE-OVER 20 FEET
- HIGHWAY BRIDGE-LONG RIVER CROSSING
- PRIMITIVE OR UNIMPROVED ROAD
- GRADED AND DRAINED, SOIL, GRAVEL OR STONE SURFACED ROAD
- PAVED ROAD
- PAVED HIGHWAY OR ROAD
- DIVIDED ROADWAY
- DISTANCE IN MILES BETWEEN DESIGNATED POINTS
- FULL CONTROL OF ACCESS
- NATIONAL PARK SERVICE HIGHWAY
- HIGHWAY INTERCHANGE
- COUNTY LINE
- STATE LINE
- INCORPORATED CITY BOUNDARY
- RESERVATION BOUNDARY

LEGEND

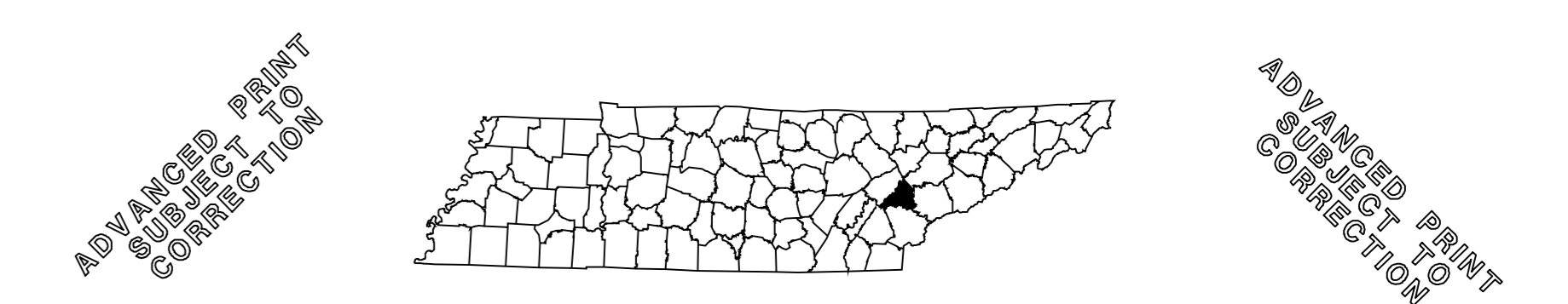
- STATION NUMBER ● 143
- A. A. D. T. 6580
- (ANNUAL AVERAGE DAILY TRAFFIC)

NOTES

HIGHEST STATION NUMBER FOR THIS COUNTY - 149

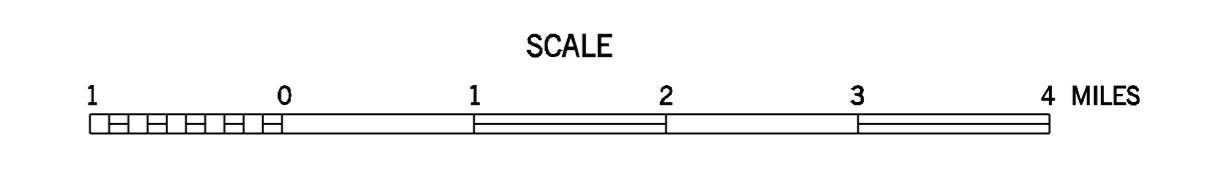
STATION NUMBERS ON LOUDON COUNTY MAP

- 1-2-3-4-5-6-7-8-9-13-14-15-19-21-22-27-31-
- 34-35-36-40-41-42-43-44-48-49-50-52-53-
- 63-64-65-67-68-69-70-71-72-77-79-80-81-
- 82-84-85-86-87-92-93-94-97-98-100-101-102-
- 103-105-108-109-110-121-124-125-126-127-129-
- 130-131-133-134-140



2010 TRAFFIC MAP
LOUDON COUNTY
 TENNESSEE

PREPARED BY THE
 TENNESSEE DEPARTMENT OF TRANSPORTATION
 LONG RANGE AND PROJECT PLANNING DIVISIONS
 IN COOPERATION WITH THE
 U.S. DEPARTMENT OF TRANSPORTATION
 FEDERAL HIGHWAY ADMINISTRATION

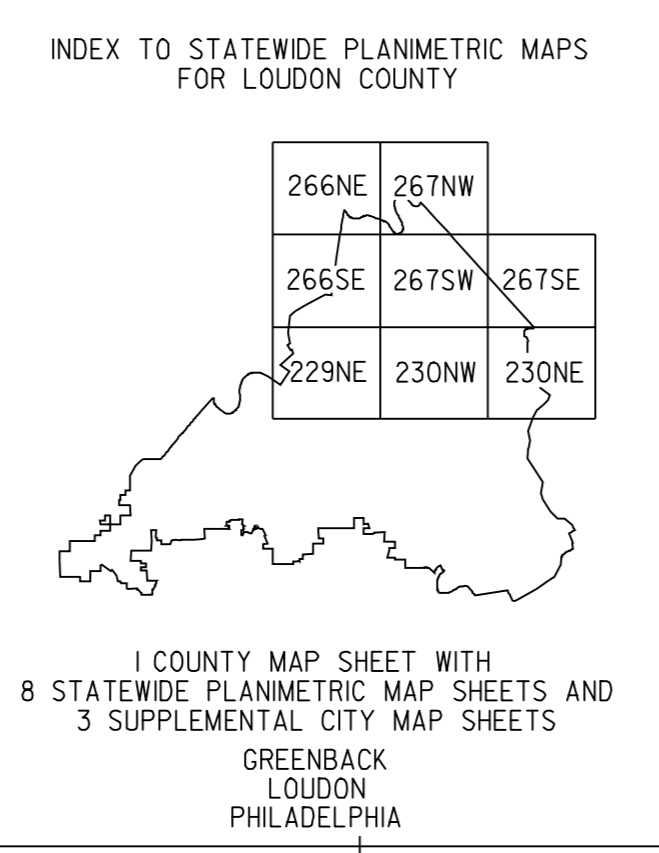


2010

AUTHORIZATION NO. 40190035300

MAP RECORD
 FIELD DATA OBTAINED IN 2001
 FIELD EXAMINATION MADE IN

REVISIONS	DATE



LAMBERT CONFORMAL CONIC PROJECTION
 20,000 FOOT GRID Ticks BASED ON THE
 TENNESSEE COORDINATE SYSTEM
 (1927 NORTH AMERICAN DATUM)

POPULATION OF LOUDON COUNTY
 39,086 (2000 CENSUS)

COUNTY	STATION NUMBER	YEAR	AADT
53	000001	2010	8676
53	000002	2010	510
53	000003	2010	9332
53	000004	2010	944
53	000005	2010	4048
53	000006	2010	16085
53	000007	2010	10092
53	000008	2010	2197
53	000009	2010	838
53	000010	2010	5787
53	000011	2010	8521
53	000012	2010	3959
53	000013	2010	2136
53	000014	2010	1402
53	000015	2010	1835
53	000017	2010	10818
53	000019	2010	580
53	000021	2010	2390
53	000022	2010	911
53	000023	2010	3727
53	000024	2010	369
53	000025	2010	7971
53	000027	2010	1791
53	000031	2010	1099
53	000034	2010	1050
53	000035	2010	3126
53	000036	2010	356
53	000040	2010	1113
53	000041	2010	1174
53	000042	2010	1216
53	000043	2010	2926
53	000044	2010	13006
53	000047	2010	17306
53	000048	2010	39014
53	000049	2010	38644
53	000050	2010	57724
53	000051	2010	25181
53	000052	2010	17319
53	000053	2010	5111
53	000055	2010	7727
53	000056	2010	12605
53	000057	2010	2094
53	000058	2010	6218
53	000059	2010	27652
53	000060	2010	13333
53	000063	2010	13436
53	000064	2010	9168
53	000065	2010	3381
53	000067	2010	247
53	000068	2010	11776
53	000069	2010	42507

53	000070	2010	47954
53	000071	2010	51143
53	000072	2010	588
53	000073	2010	10893
53	000074	2010	2212
53	000075	2010	12201
53	000076	2010	2194
53	000077	2010	9038
53	000079	2010	1502
53	000080	2010	664
53	000081	2010	567
53	000082	2010	4108
53	000084	2010	888
53	000085	2010	498
53	000086	2010	1552
53	000087	2010	5314
53	000088	2010	1582
53	000089	2010	1681
53	000090	2010	1542
53	000091	2010	4998
53	000092	2010	5837
53	000093	2010	1594
53	000094	2010	5590
53	000097	2010	6228
53	000098	2010	2659
53	000100	2010	1808
53	000101	2010	8648
53	000102	2010	1181
53	000103	2010	4042
53	000104	2010	979
53	000105	2010	7827
53	000106	2010	4213
53	000108	2010	1294
53	000109	2010	894
53	000110	2010	781
53	000111	2010	1737
53	000112	2010	951
53	000113	2010	962
53	000114	2010	632
53	000115	2010	2998
53	000117	2010	2410
53	000118	2010	1052
53	000119	2010	2854
53	000120	2010	881
53	000121	2010	105033
53	000122	2010	7654
53	000124	2010	829
53	000125	2010	439
53	000126	2010	1386
53	000127	2010	2111
53	000129	2010	268
53	000130	2010	292

53	000131	2010	211
53	000133	2010	533
53	000134	2010	549
53	000135	2010	3344
53	000136	2010	323
53	000137	2010	1744
53	000138	2010	1114
53	000139	2010	2273
53	000140	2010	489
53	000141	2010	1421
53	000142	2010	5203
53	000143	2010	225
53	000144	2010	2200
53	000145	2010	720
53	000146	2010	580
53	000147	2010	600
53	000148	2010	1350
53	000149	2010	2010