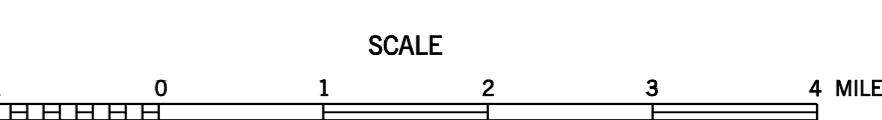


- LEGEND**
- SCHOOL
 - CHURCH
 - CHURCH WITH CEMETERY
 - CEMETERY
 - HOSPITAL
 - POST OFFICE
 - HIGHWAY PATROL STATION
 - CITY HALL OR COMMUNITY CENTER
 - MONUMENT
 - AIRPORT - COMPLETE FACILITIES
 - AIRPORT - LIMITED FACILITIES
 - LANDING AREA OR STRIP
 - POWER PLANT
 - WEIGHT STATION
 - HIGHWAY GARAGE (S-STATE, C-COUNTY)
 - TRIANGULATION STATION
 - OBSERVATION OR LOOKOUT TOWER
 - COUNTY SEAT
 - OTHER CITIES AND VILLAGES
 - RADIO OR TELEVISION STATION
 - POINT OF INTEREST
 - DOT TO INDICATE LOCATION OF ANY CULTURAL FEATURE OUT OF PLACE
 - INTERSTATE HIGHWAY MARKER
 - U S NUMBERED HIGHWAY MARKER
 - STATE HIGHWAY MARKER
 - FEDERAL AND SECONDARY SYSTEM
 - PROMINENT PEAK WITH ELEVATION
 - LAKE WITH DAM
 - RESERVOIR, POND OR LAKE
 - LEVEE OR DIKE
 - DRAINAGE CANAL
 - NARROW STREAM
 - WIDE STREAM
 - DAM WITH LOCK
 - HEAD OF NAVIGATION
 - NAVIGABLE STREAM
 - GRADE CROSSING
 - UNDERPASS-ROAD BELOW
 - OVERHEAD-ROAD ABOVE
 - RAILROAD TUNNEL
 - GRADE SEPARATION
 - FORD
 - LOW WATER BRIDGE
 - FREE FERRY OR TOLL FERRY
 - HIGHWAY BRIDGE-OVER 20 FEET
 - HIGHWAY BRIDGE-UNDER 20 FEET
 - CONCRETE, S-STEEL, W-WOOD
 - PRIMITIVE OR UNSURFACED ROAD
 - GRADED AND DRAINED, SOIL, GRAVEL
 - OR TOP SURFACED ROAD
 - PAVED ROAD
 - PAVED HIGHWAY OR ROAD
 - DIVIDED ROADWAY
 - DISTANCE IN MILES BETWEEN DESIGNATED POINTS
 - FULL CONTROL OF ACCESS
 - NATIONAL PARK SERVICE HIGHWAY
 - HIGHWAY INTERCHANGE
 - COUNTY LINE
 - STATE LINE
 - MONUMENTED BOUNDARY MARKER
 - INCORPORATED CITY BOUNDARY
 - RESERVATION BOUNDARY
 - PAVED OR GRAVEL PUBLIC ROAD
 - MAINTENANCE NOT CITY OR COUNTY RESPONSIBILITY

- LEGEND**
- STATION NUMBER ● 62
 - A. A. D. T. ● 1010
 - (ANNUAL AVERAGE DAILY TRAFFIC)
- NOTES**
- HIGHEST STATION NUMBER FOR THIS COUNTY - 258
 - ATR-14 (990)
- STATION NUMBERS ON MADISON COUNTY MAP**
- 1-2-3-4-7-14-15-16-17-18-19-20-21-32-33-34-35-36-37-49-50-51-54-55-56-57-58-60-62-63-64-65-67-68-69-71-91-93-94-95-110-112-119-121-122-128-133-134-135-136-143-145-146-151-153-154-157-175-176-179-191-192-222-223-224-226-242

2010 TRAFFIC MAP
MADISON COUNTY
 TENNESSEE

PREPARED BY THE
 TENNESSEE DEPARTMENT OF TRANSPORTATION
 LONG RANGE AND PROJECT PLANNING DIVISIONS
 IN COOPERATION WITH THE
 U.S. DEPARTMENT OF TRANSPORTATION
 FEDERAL HIGHWAY ADMINISTRATION



2010

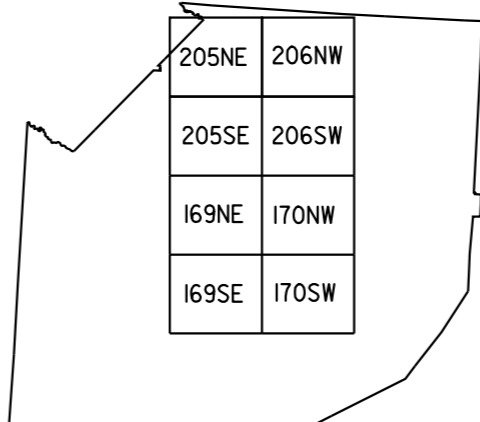
MAP RECORD

FIELD DATA OBTAINED IN 1989
 FIELD EXAMINATION MADE IN 1993

REVISIONS	DATE
FEATURE	
UPDATED USING INFORMATION PROVIDED BY LOCAL OFFICIALS	2005

POPULATION OF MADISON COUNTY
 90,837 (2000 CENSUS)

LAMBERT CONFORMAL CONIC PROJECTION
 20,000 FOOT GRID TICKS BASED ON THE
 TENNESSEE COORDINATE SYSTEM
 1927 NORTH AMERICAN DATUM



COUNTY	STATION NUMBER	YEAR	AADT
57	000001	2010	1188
57	000002	2010	4151
57	000003	2010	1733
57	000004	2010	740
57	000005	2010	3360
57	000006	2010	14204
57	000007	2010	12490
57	000008	2010	29094
57	000009	2010	3033
57	000010	2010	3897
57	000011	2010	620
57	000012	2010	4810
57	000013	2010	4070
57	000014	2010	256
57	000015	2010	2582
57	000016	2010	251
57	000017	2010	1163
57	000018	2010	992
57	000019	2010	100
57	000020	2010	960
57	000021	2010	781
57	000022	2010	490
57	000023	2010	1325
57	000024	2010	9155
57	000025	2010	14539
57	000026	2010	4809
57	000027	2010	24126
57	000028	2010	9802
57	000029	2010	2022
57	000030	2010	7783
57	000031	2010	7211
57	000032	2010	6585
57	000033	2010	4416
57	000034	2010	9351
57	000035	2010	291
57	000036	2010	680
57	000037	2010	1447
57	000038	2010	3746
57	000039	2010	3702
57	000040	2010	3936
57	000041	2010	35064
57	000042	2010	4284
57	000043	2010	6335
57	000044	2010	1484
57	000045	2010	31265
57	000046	2010	3171
57	000047	2010	18778
57	000048	2010	584
57	000049	2010	6114
57	000050	2010	135
57	000051	2010	176

57	000054	2010	830
57	000055	2010	278
57	000056	2010	6001
57	000057	2010	496
57	000058	2010	325
57	000060	2010	1985
57	000062	2010	164
57	000063	2010	1195
57	000064	2010	16908
57	000065	2010	16628
57	000066	2010	953
57	000067	2010	1434
57	000068	2010	548
57	000069	2010	566
57	000071	2010	360
57	000072	2010	2500
57	000073	2010	4811
57	000076	2010	7231
57	000077	2010	2244
57	000078	2010	13717
57	000079	2010	5950
57	000080	2010	10043
57	000081	2010	5163
57	000082	2010	5353
57	000083	2010	7830
57	000084	2010	17922
57	000086	2010	4304
57	000087	2010	8128
57	000089	2010	14085
57	000090	2010	27291
57	000091	2010	6043
57	000092	2010	56292
57	000093	2010	39912
57	000094	2010	40753
57	000095	2010	34652
57	000096	2010	45625
57	000097	2010	28140
57	000098	2010	52017
57	000099	2010	31572
57	000100	2010	12425
57	000101	2010	2366
57	000102	2010	22559
57	000103	2010	51062
57	000104	2010	25533
57	000105	2010	7189
57	000106	2010	10633
57	000107	2010	3789
57	000108	2010	2716
57	000109	2010	3310
57	000110	2010	1949
57	000111	2010	1346
57	000112	2010	294

57	000113	2010	51561
57	000114	2010	35143
57	000115	2010	12552
57	000116	2010	22751
57	000117	2010	7630
57	000118	2010	8811
57	000119	2010	378
57	000120	2010	3925
57	000121	2010	1522
57	000122	2010	512
57	000124	2010	2337
57	000125	2010	310
57	000126	2010	3281
57	000127	2010	1530
57	000128	2010	1932
57	000130	2010	1488
57	000131	2010	1310
57	000132	2010	1083
57	000133	2010	557
57	000134	2010	502
57	000135	2010	173
57	000136	2010	620
57	000138	2010	769
57	000139	2010	3000
57	000140	2010	2127
57	000141	2010	413
57	000142	2010	5140
57	000143	2010	39538
57	000145	2010	183
57	000146	2010	377
57	000147	2010	163
57	000148	2010	200
57	000149	2010	86
57	000150	2010	876
57	000151	2010	619
57	000152	2010	556
57	000153	2010	202
57	000154	2010	155
57	000155	2010	460
57	000156	2010	1392
57	000157	2010	310
57	000159	2010	11376
57	000160	2010	5560
57	000161	2010	1734
57	000162	2010	13120
57	000163	2010	1383
57	000164	2010	7937
57	000165	2010	15596
57	000166	2010	2279
57	000167	2010	1469
57	000168	2010	6001
57	000169	2010	2287

57	000170	2010	1320
57	000171	2010	12703
57	000172	2010	9216
57	000173	2010	2615
57	000174	2010	1152
57	000175	2010	1253
57	000176	2010	1230
57	000177	2010	615
57	000179	2010	631
57	000180	2010	13807
57	000181	2010	10361
57	000182	2010	13260
57	000183	2010	5440
57	000186	2010	363
57	000189	2010	2420
57	000190	2010	660
57	000191	2010	1109
57	000192	2010	406
57	000193	2010	1155
57	000194	2010	476
57	000195	2010	1275
57	000196	2010	2313
57	000197	2010	1270
57	000198	2010	14799
57	000199	2010	2791
57	000200	2010	360
57	000201	2010	1219
57	000202	2010	577
57	000203	2010	3860
57	000204	2010	8193
57	000205	2010	5413
57	000206	2010	4912
57	000207	2010	9787
57	000208	2010	8154
57	000209	2010	19120
57	000210	2010	7080
57	000211	2010	1773
57	000212	2010	21500
57	000213	2010	9104
57	000214	2010	1817
57	000215	2010	11226
57	000216	2010	45362
57	000220	2010	12144
57	000221	2010	17680
57	000222	2010	1028
57	000223	2010	1113
57	000224	2010	6377
57	000225	2010	2459
57	000226	2010	4517
57	000227	2010	14188
57	000228	2010	4011
57	000229	2010	4968

57	000230	2010	7053
57	000231	2010	7530
57	000232	2010	4333
57	000233	2010	3444
57	000234	2010	4061
57	000235	2010	23954
57	000236	2010	14462
57	000237	2010	8040
57	000238	2010	9380
57	000239	2010	29585
57	000240	2010	2580
57	000241	2010	9831
57	000242	2010	45738
57	000243	2010	11879
57	000246	2010	4180
57	000247	2010	38946
57	000248	2010	27447
57	000249	2010	2231
57	000250	2010	46840
57	000251	2010	12947
57	000252	2010	4145
57	000253	2010	16718
57	000254	2010	7157
57	000255	2010	7166
57	000256	2010	4397
57	000257	2010	9896
57	000258	2010	56767
57	000990	2010	1323