

LEGEND

- SCHOOL
- CHURCH WITH CEMETERY
- CEMETERY
- HOSPITAL
- POST OFFICE
- CITY HALL OR COMMUNITY CENTER
- MONUMENT
- AIRPORT - COMPLETE FACILITIES
- AIRPORT - LIMITED FACILITIES
- LANDING AREA OR STRIP
- HIGHWAY GARAGE (S-STATE, C-COUNTY)
- TRIANGULATION STATION
- OBSERVATION OR LOOKOUT TOWER
- COUNTY SEAT
- OTHER CITIES AND VILLAGES
- RADIO OR TELEVISION STATION
- POINT OF INTEREST
- DOT TO INDICATE LOCATION OF ANY CULTURAL FEATURE OUT OF PLACE
- INTERSTATE HIGHWAY
- U S NUMBERED HIGHWAY
- STATE HIGHWAY
- PROMINENT PEAK WITH ELEVATION
- LAKE WITH DAM
- RESERVOIR, POND OR LAKE
- LEVEE OR DYKE
- DRAINAGE CANAL
- NARROW STREAM
- WIDE STREAM
- DAM WITH LOCK
- HEAD OF NAVIGATION
- NAVIGABLE STREAM
- GRADE CROSSING
- UNDERPASS-ROAD BELOW
- OVERPASS-ROAD ABOVE
- RAILROAD TUNNEL
- GRADE SEPARATION
- FORD
- LOW WATER BRIDGE
- FREE FERRY OR TOLL FERRY
- HIGHWAY BRIDGE-OVER 20 FEET
- HIGHWAY BRIDGE-LONG RIVER CROSSING
- PRIMITIVE OR UNIMPROVED ROAD
- GRADED AND DRAINED, SOIL, GRAVEL OR STONE SURFACED ROAD
- PAVED ROAD
- PAVED HIGHWAY OR ROAD
- DIVIDED ROADWAY
- DISTANCE IN MILES BETWEEN DESIGNATED POINTS
- FULL CONTROL OF ACCESS
- NATIONAL PARK SERVICE HIGHWAY
- HIGHWAY INTERCHANGE
- COUNTY LINE
- STATE LINE
- INCORPORATED CITY BOUNDARY
- RESERVATION BOUNDARY
- PAVED OR GRAVEL PUBLIC ROAD
- MAINTENANCE NOT CITY OR COUNTY RESPONSIBILITY

MAP RECORD
FIELD DATA OBTAINED IN 2003
FIELD EXAMINATION MADE IN

REVISIONS	DATE

LAMBERT CONFORMAL CONIC PROJECTION
20,000 FOOT GRID TICKS BASED ON THE
TENNESSEE COORDINATE SYSTEM
(GREAT NORTH AMERICAN DATUM)

POPULATION OF ROANE COUNTY
5,910 (2000 CENSUS)

LEGEND

STATION NUMBER ● 143
A. A. D. T. 6580
(ANNUAL AVERAGE DAILY TRAFFIC)

NOTES

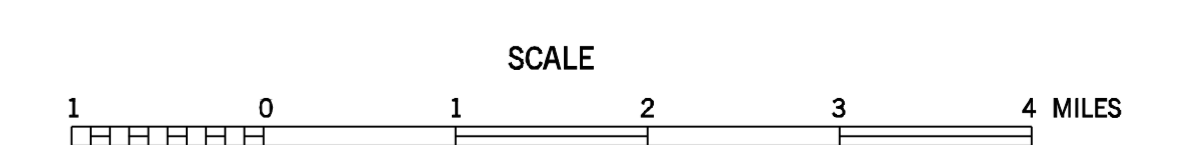
HIGHEST STATION NUMBER FOR THIS COUNTY - 186
ATR-8 (990)

STATION NUMBERS ON ROANE COUNTY MAP
1-2-7-9-12-13-20-21-24-26-27-28-29-31-32-34-36-37-38-39-
45-49-50-51-52-54-55-64-65-66-80-84-88-89-90-91-93-95-98-
100-101-102-133-134-139-145-155-156-158-159-179-180-185

ADVANCED PRINT
SUBJECT TO
CORRECTION

2010 TRAFFIC MAP
ROANE COUNTY
TENNESSEE

PREPARED BY THE
TENNESSEE DEPARTMENT OF TRANSPORTATION
LONG RANGE AND PROJECT PLANNING DIVISIONS
IN COOPERATION WITH THE
U.S. DEPARTMENT OF TRANSPORTATION
FEDERAL HIGHWAY ADMINISTRATION



2010

AUTHORIZATION NO. 4090067300

COUNTY	STATION NUMBER	YEAR	AADT
73	000001	2010	1295
73	000002	2010	6751
73	000004	2010	2806
73	000005	2010	2442
73	000006	2010	661
73	000007	2010	3868
73	000009	2010	400
73	000010	2010	989
73	000012	2010	667
73	000013	2010	3223
73	000015	2010	12530
73	000016	2010	2760
73	000017	2010	9362
73	000018	2010	10755
73	000019	2010	2768
73	000020	2010	1440
73	000021	2010	4461
73	000024	2010	2120
73	000026	2010	1127
73	000027	2010	590
73	000028	2010	1133
73	000029	2010	561
73	000031	2010	2208
73	000032	2010	2697
73	000034	2010	2297
73	000036	2010	1843
73	000037	2010	9108
73	000038	2010	10456
73	000039	2010	2283
73	000040	2010	16565
73	000041	2010	155
73	000042	2010	13335
73	000043	2010	4246
73	000044	2010	530
73	000045	2010	1300
73	000047	2010	8081
73	000048	2010	2630
73	000049	2010	6547
73	000050	2010	2282
73	000051	2010	711
73	000052	2010	750
73	000054	2010	1521
73	000055	2010	758
73	000056	2010	13913
73	000057	2010	12865
73	000058	2010	6867
73	000059	2010	9681
73	000060	2010	11592
73	000061	2010	9940
73	000062	2010	41675
73	000063	2010	44431

73	000064	2010	38376
73	000065	2010	32916
73	000066	2010	9300
73	000067	2010	43597
73	000068	2010	14583
73	000069	2010	260
73	000070	2010	1013
73	000071	2010	13605
73	000072	2010	10287
73	000073	2010	10871
73	000074	2010	18522
73	000076	2010	2127
73	000077	2010	1431
73	000078	2010	12883
73	000079	2010	533
73	000080	2010	331
73	000081	2010	1604
73	000082	2010	10014
73	000083	2010	8592
73	000084	2010	1194
73	000088	2010	82
73	000089	2010	816
73	000090	2010	1100
73	000091	2010	2627
73	000093	2010	567
73	000094	2010	12760
73	000095	2010	1661
73	000096	2010	854
73	000097	2010	5329
73	000098	2010	678
73	000099	2010	590
73	000100	2010	356
73	000101	2010	707
73	000102	2010	582
73	000103	2010	1879
73	000107	2010	917
73	000108	2010	2643
73	000109	2010	932
73	000110	2010	4531
73	000111	2010	431
73	000112	2010	346
73	000113	2010	510
73	000114	2010	380
73	000115	2010	752
73	000116	2010	415
73	000117	2010	3961
73	000118	2010	423
73	000119	2010	173
73	000120	2010	302
73	000121	2010	755
73	000122	2010	980
73	000123	2010	772

73	000125	2010	1102
73	000126	2010	297
73	000127	2010	1224
73	000128	2010	1356
73	000129	2010	160
73	000130	2010	240
73	000131	2010	586
73	000132	2010	2410
73	000133	2010	1364
73	000134	2010	333
73	000135	2010	4056
73	000136	2010	672
73	000137	2010	929
73	000138	2010	660
73	000139	2010	950
73	000140	2010	1205
73	000141	2010	3266
73	000142	2010	175
73	000143	2010	760
73	000144	2010	1808
73	000145	2010	2118
73	000146	2010	2862
73	000147	2010	2377
73	000148	2010	777
73	000149	2010	884
73	000150	2010	190
73	000151	2010	1099
73	000152	2010	1289
73	000153	2010	12120
73	000154	2010	1370
73	000155	2010	8035
73	000156	2010	19466
73	000157	2010	2280
73	000158	2010	27783
73	000159	2010	290
73	000161	2010	560
73	000163	2010	1892
73	000164	2010	233
73	000165	2010	1338
73	000166	2010	748
73	000167	2010	295
73	000168	2010	493
73	000169	2010	338
73	000170	2010	3866
73	000171	2010	80
73	000172	2010	350
73	000173	2010	191
73	000174	2010	3306
73	000175	2010	1350
73	000176	2010	1500
73	000178	2010	501
73	000179	2010	870

73	000180	2010	1208
73	000183	2010	282
73	000184	2010	611
73	000185	2010	39053
73	000186	2010	600
73	000990	2010	4537