

- LEGEND**
- SCHOOL
  - ⊕ CHURCH WITH CEMETERY
  - ⊕ CEMETERY
  - ⊕ HOSPITAL
  - ⊕ POST OFFICE
  - ⊕ CITY HALL OR COMMUNITY CENTER
  - ⊕ MONUMENT
  - ⊕ AIRPORT, COMPLETE FACILITIES
  - ⊕ AIRPORT, LIMITED FACILITIES
  - ⊕ LANDING AREA OR STRIP
  - ⊕ HIGHWAY GARAGE (S-STATE, C-COUNTY)
  - ⊕ TRANSLATION STATION
  - ⊕ OBSERVATION OR LOOKOUT TOWER
  - ⊕ COUNTY SEAT
  - ⊕ OTHER CITIES AND VILLAGES
  - ⊕ RADIO OR TELEVISION STATION
  - ⊕ POINT OF INTEREST
  - ⊕ DOT TO INDICATE LOCATION OF ANY CULTURAL FEATURE OUT OF PLACE
  - ⊕ INTERSTATE HIGHWAY
  - ⊕ U.S. NUMBERED HIGHWAY
  - ⊕ STATE HIGHWAY
  - ⊕ STATE HIGHWAY
  - ⊕ PROMINENT PEAK WITH ELEVATION
  - ⊕ LAKE WITH DAM
  - ⊕ RESERVOIR, POND OR LAKE
  - ⊕ LEVEE OR DYKE
  - ⊕ DRAINAGE CANAL
  - ⊕ NARROW STREAM
  - ⊕ WIDE STREAM
  - ⊕ DAM WITH LOCK
  - ⊕ HEAD OF NAVIGATION
  - ⊕ NAVIGABLE STREAM
  - ⊕ GRADE CROSSING
  - ⊕ UNDERPASS-ROAD BELOW
  - ⊕ OVERHEAD-ROAD ABOVE
  - ⊕ RAILROAD TUNNEL
  - ⊕ GRADE SEPARATION
  - ⊕ FORD
  - ⊕ LOW WATER BRIDGE
  - ⊕ FREE FERRY OR TOLL FERRY
  - ⊕ HIGHWAY BRIDGE-OVER 20 FEET
  - ⊕ HIGHWAY BRIDGE-LONG RIVER CROSSING
  - ⊕ PRIMITIVE OR UNIMPROVED ROAD
  - ⊕ GRADED AND DRAINED, SOL, GRAVEL OR STONE SURFACED ROAD
  - ⊕ PAVED ROAD
  - ⊕ PAVED HIGHWAY OR ROAD
  - ⊕ DIVIDED ROADWAY
  - ⊕ DISTANCE IN MILES DESIGNATED POINTS
  - ⊕ FULL CONTROL OF ACCESS
  - ⊕ NPS NATIONAL PARK SERVICE HIGHWAY
  - ⊕ HIGHWAY INTERCHANGE
  - ⊕ COUNTY LINE
  - ⊕ STATE LINE
  - ⊕ INCORPORATED CITY BOUNDARY
  - ⊕ RESERVATION BOUNDARY

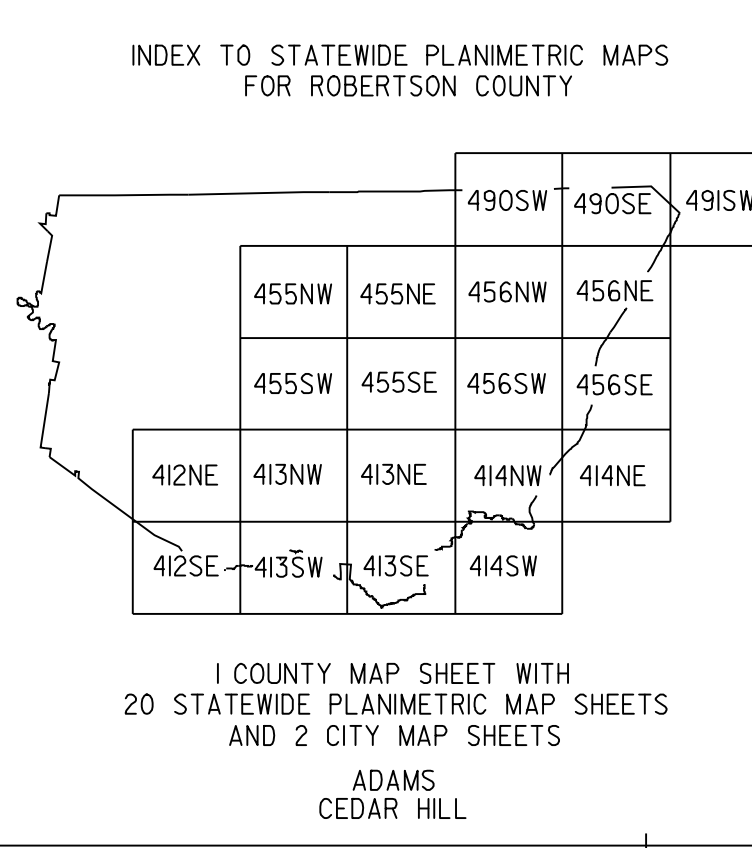
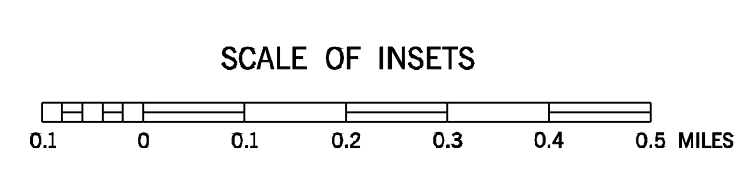
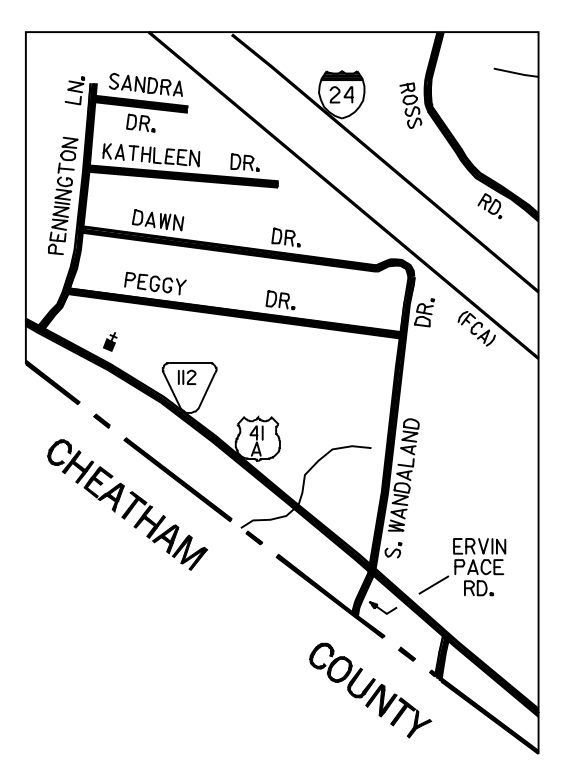
**LEGEND**

● STATION NUMBER  
 ● A. A. D. T.  
 ● (ANNUAL AVERAGE DAILY TRAFFIC)

**NOTES**

HIGHEST STATION NUMBER FOR THIS COUNTY - 173  
 ATR-69 (991)  
 (991)

STATION NUMBERS ON ROBERTSON COUNTY MAP  
 4-7-8-9-11-12-13-16-19-20-22-23-24-25-26-27-28-29-30-31-32-34-37-40  
 42-43-44-45-46-48-49-51-54-55-57-58-59-64-65-69-70-73-74-75-76  
 77-79-80-81-82-83-85-87-88-89-99-101-103-106-107-108-109-110-111-113  
 114-116-117-118-119-120-121-122-124-128-130-131-132-133-139-140-141-142-154  
 155-158-162-163-164-165-166-167-168-169-170-171-172-173



**MAP RECORD**  
 FIELD DATA OBTAINED IN 1995  
 FIELD EXAMINATION MADE IN 1996

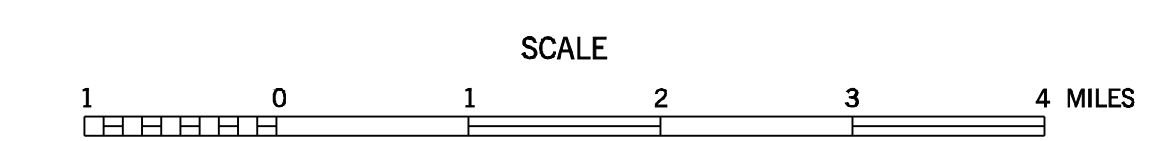
REVISIONS	DATE
STATE HIGHWAY SYSTEM	

POPULATION OF ROBERTSON COUNTY  
 54,433 (2000 CENSUS)

LAMBERT CONFORMAL CONIC PROJECTION  
 20,000 FOOT GRID TICS BASED ON THE  
 TENNESSEE COORDINATE SYSTEM  
 0927 NORTH AMERICAN DATUM

# 2010 TRAFFIC MAP ROBERTSON COUNTY TENNESSEE

PREPARED BY THE  
 TENNESSEE DEPARTMENT OF TRANSPORTATION  
 LONG RANGE AND PROJECT PLANNING DIVISIONS  
 IN COOPERATION WITH THE  
 U.S. DEPARTMENT OF TRANSPORTATION  
 FEDERAL HIGHWAY ADMINISTRATION



2010

COUNTY	STATION NUMBER	YEAR	AADT
74	000004	2010	10288
74	000007	2010	1171
74	000008	2010	676
74	000009	2010	1563
74	000011	2010	782
74	000012	2010	340
74	000013	2010	182
74	000016	2010	218
74	000019	2010	307
74	000020	2010	1585
74	000022	2010	505
74	000023	2010	147
74	000024	2010	652
74	000025	2010	2372
74	000026	2010	820
74	000027	2010	947
74	000028	2010	1000
74	000029	2010	1495
74	000030	2010	887
74	000031	2010	1509
74	000032	2010	616
74	000033	2010	8170
74	000034	2010	2349
74	000035	2010	1167
74	000036	2010	4971
74	000037	2010	2731
74	000040	2010	5981
74	000041	2010	15684
74	000042	2010	840
74	000043	2010	3680
74	000044	2010	1795
74	000045	2010	1770
74	000046	2010	2977
74	000048	2010	941
74	000049	2010	2859
74	000051	2010	5543
74	000054	2010	16656
74	000055	2010	540
74	000057	2010	857
74	000058	2010	4320
74	000059	2010	2653
74	000061	2010	9550
74	000062	2010	25555
74	000063	2010	7080
74	000064	2010	1671
74	000065	2010	441
74	000069	2010	1529
74	000070	2010	223
74	000073	2010	905
74	000074	2010	8035
74	000075	2010	504

74	000076	2010	1558
74	000077	2010	1037
74	000079	2010	1111
74	000080	2010	1634
74	000081	2010	2678
74	000082	2010	18461
74	000083	2010	2290
74	000085	2010	955
74	000087	2010	1235
74	000088	2010	5746
74	000089	2010	8654
74	000090	2010	28203
74	000091	2010	9478
74	000092	2010	5773
74	000093	2010	3088
74	000094	2010	9885
74	000095	2010	7358
74	000098	2010	53719
74	000099	2010	64260
74	000101	2010	695
74	000103	2010	2930
74	000106	2010	57292
74	000107	2010	1433
74	000108	2010	44838
74	000109	2010	46675
74	000110	2010	14515
74	000111	2010	3501
74	000113	2010	569
74	000114	2010	1968
74	000115	2010	19414
74	000116	2010	6605
74	000117	2010	3224
74	000118	2010	2967
74	000119	2010	1570
74	000120	2010	1060
74	000121	2010	217
74	000122	2010	15861
74	000123	2010	11306
74	000124	2010	9717
74	000125	2010	445
74	000128	2010	3578
74	000130	2010	3242
74	000131	2010	493
74	000132	2010	915
74	000133	2010	5128
74	000134	2010	694
74	000135	2010	2813
74	000136	2010	3915
74	000137	2010	3832
74	000138	2010	5246
74	000139	2010	324
74	000140	2010	7783

74	000141	2010	2460
74	000142	2010	644
74	000143	2010	11202
74	000144	2010	632
74	000145	2010	2121
74	000146	2010	498
74	000147	2010	4871
74	000148	2010	5104
74	000149	2010	1236
74	000150	2010	2714
74	000151	2010	2407
74	000152	2010	3288
74	000153	2010	829
74	000154	2010	10040
74	000155	2010	13567
74	000156	2010	5628
74	000157	2010	3042
74	000158	2010	2385
74	000159	2010	1639
74	000160	2010	758
74	000161	2010	1882
74	000162	2010	539
74	000163	2010	8365
74	000164	2010	3333
74	000165	2010	4553
74	000166	2010	20854
74	000167	2010	6030
74	000168	2010	1885
74	000169	2010	2424
74	000170	2010	195
74	000171	2010	1324
74	000172	2010	7709
74	000173	2010	8996
74	000990	2010	38623
74	000991	2010	2164