

**LEGEND**

- SCHOOL
- CHURCH
- CHURCH WITH CEMETERY
- CEMETERY
- HOSPITAL
- POST OFFICE
- CITY HALL OR COMMUNITY CENTER
- MONUMENT
- AIRPORT - COMPLETE FACILITIES
- AIRPORT - LIMITED FACILITIES
- LANDING AREA OR STRIP
- HIGHWAY GARAGE IS-STATE, C-COUNTY
- TRIANGULATION STATION
- OBSERVATION OR LOOKOUT TOWER
- COUNTY SEAT
- OTHER CITIES AND VILLAGES
- RADIO OR TELEVISION STATION
- POINT OF INTEREST
- DOT TO INDICATE LOCATION OF ANY CULTURAL FEATURE OUT OF PLACE
- INTERSTATE HIGHWAY
- U.S. NUMBERED HIGHWAY
- STATE HIGHWAY
- PROMINENT PEAK WITH ELEVATION
- LAKE WITH DAM
- RESERVOIR, POND OR LAKE
- LEVEE OR DIKE
- DRAINAGE CANAL
- NARROW STREAM
- WIDE STREAM
- DAM WITH LOCK
- HEAD OF NAVIGATION
- NAVIGABLE STREAM
- GRADE CROSSING
- UNDERPASS-ROAD BELOW
- OVERHEAD-ROAD ABOVE
- RAILROAD TUNNEL
- GRADE SEPARATION
- FORD
- LOW WATER BRIDGE
- FREE FERRY OR TOLL FERRY
- HIGHWAY BRIDGE-OVER 20 FEET
- HIGHWAY BRIDGE-LONG RIVER CROSSING
- PRIMITIVE OR UNIMPROVED ROAD
- GRADED AND DRAINED SOIL, GRAVEL OR STONE SURFACED ROAD
- PAVED ROAD
- PAVED HIGHWAY OR ROAD
- DIVIDED ROADWAY
- DISTANCE IN MILES BETWEEN DESIGNATED POINTS
- FULL CONTROL OF ACCESS
- NPS
- NATIONAL PARK SERVICE HIGHWAY
- HIGHWAY INTERCHANGE
- COUNTY LINE
- STATE LINE
- INCORPORATED CITY BOUNDARY
- RESERVATION BOUNDARY

**LEGEND**  
 STATION NUMBER ● 143  
 A A D T 6590  
 (ANNUAL AVERAGE DAILY TRAFFIC)

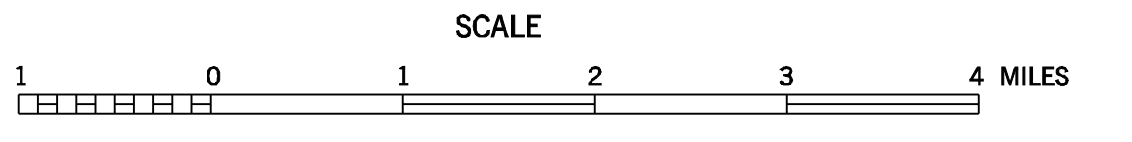
**NOTES**  
 HIGHEST STATION NUMBER FOR THIS COUNTY - 148

**STATION NUMBERS ON TIPTON COUNTY MAP**  
 1-2-4-7-8-9-10-11-12-13-14-16-17-18-19-21-22-23-30-  
 32-33-34-36-39-40-43-44-49-50-53-54-55-57-58-  
 61-64-66-67-69-70-71-74-75-76-77-78-79-80-81-82-  
 83-84-85-91-92-96-104-107-108-109-110-123-124-125-  
 126-131-132-139-142-143-144

ADVANCED PRINT  
 SELECT TO  
 CONNECTION

2010 TRAFFIC MAP  
**TIPTON COUNTY**  
 TENNESSEE

PREPARED BY THE  
 TENNESSEE DEPARTMENT OF TRANSPORTATION  
 LONG RANGE AND PROJECT PLANNING DIVISIONS  
 IN COOPERATION WITH THE  
 U.S. DEPARTMENT OF TRANSPORTATION  
 FEDERAL HIGHWAY ADMINISTRATION

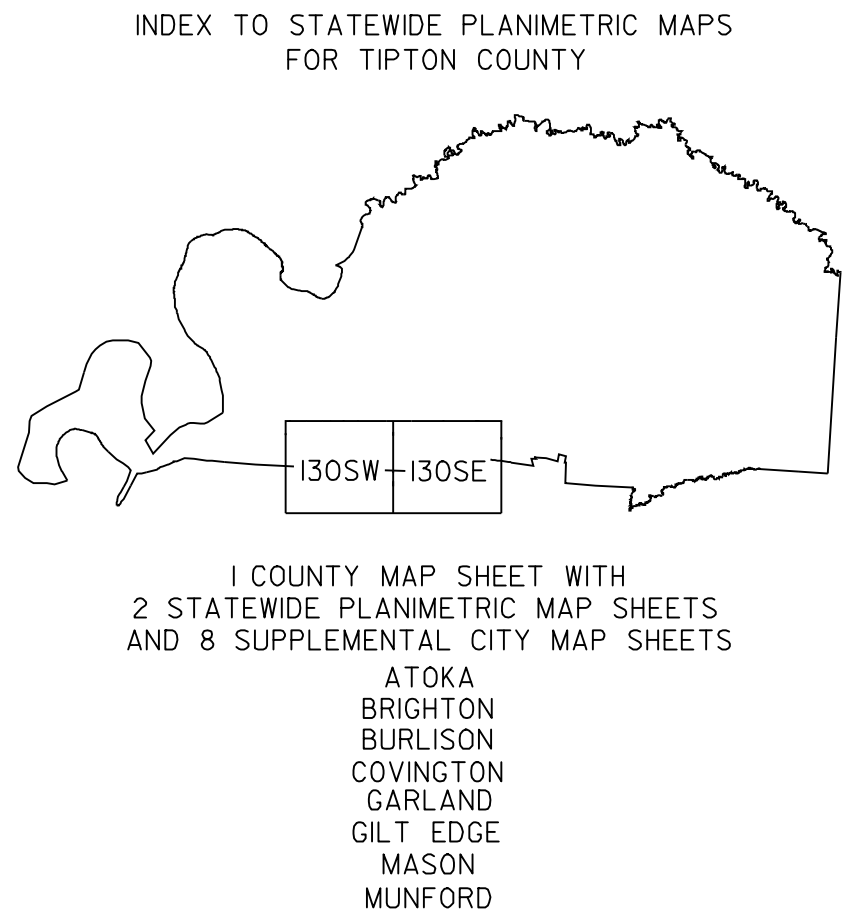


2010

AUTHORIZATION NO. 4090958400

**MAP RECORD**  
 FIELD DATA OBTAINED IN 1991  
 FIELD EXAMINATION MADE IN 1995

REVISIONS	DATE



POPULATION OF TIPTON COUNTY  
 37,268 (1990 CENSUS)

LAMBERT CONFORMAL CONIC PROJECTION  
 20,000 FOOT GRID TICS BASED ON THE  
 TENNESSEE COORDINATE SYSTEM  
 1927 NORTH AMERICAN DATUM

COUNTY	STATION NUMBER	YEAR	AADT
84	000001	2010	225
84	000002	2010	247
84	000004	2010	878
84	000007	2010	1296
84	000008	2010	508
84	000009	2010	758
84	000010	2010	309
84	000011	2010	266
84	000012	2010	891
84	000013	2010	2815
84	000014	2010	1150
84	000016	2010	1121
84	000017	2010	5074
84	000018	2010	2978
84	000019	2010	4673
84	000020	2010	3663
84	000021	2010	2885
84	000022	2010	1182
84	000023	2010	884
84	000025	2010	10504
84	000026	2010	19431
84	000027	2010	9705
84	000028	2010	6816
84	000030	2010	3682
84	000032	2010	1519
84	000033	2010	5038
84	000034	2010	2434
84	000036	2010	19685
84	000038	2010	3821
84	000039	2010	1947
84	000040	2010	4000
84	000041	2010	22523
84	000042	2010	4049
84	000043	2010	1813
84	000044	2010	456
84	000047	2010	4636
84	000049	2010	2872
84	000050	2010	1414
84	000051	2010	6521
84	000053	2010	267
84	000054	2010	163
84	000055	2010	1447
84	000057	2010	154
84	000058	2010	747
84	000061	2010	1287
84	000064	2010	3880
84	000066	2010	2758
84	000067	2010	585
84	000069	2010	676
84	000070	2010	633
84	000071	2010	1507

84	000074	2010	3241
84	000075	2010	1976
84	000076	2010	3754
84	000077	2010	1738
84	000078	2010	5553
84	000079	2010	2688
84	000080	2010	2251
84	000081	2010	643
84	000082	2010	2279
84	000083	2010	17396
84	000084	2010	339
84	000085	2010	284
84	000086	2010	3108
84	000087	2010	17448
84	000088	2010	5124
84	000089	2010	2480
84	000090	2010	20215
84	000091	2010	25719
84	000092	2010	9593
84	000095	2010	4727
84	000096	2010	2333
84	000097	2010	743
84	000098	2010	1348
84	000099	2010	4364
84	000100	2010	1410
84	000101	2010	2639
84	000103	2010	2863
84	000104	2010	1415
84	000105	2010	4547
84	000106	2010	7430
84	000107	2010	4439
84	000108	2010	317
84	000109	2010	465
84	000110	2010	439
84	000111	2010	1326
84	000112	2010	3035
84	000113	2010	2737
84	000114	2010	1840
84	000115	2010	1575
84	000116	2010	3643
84	000117	2010	1684
84	000118	2010	2648
84	000119	2010	2570
84	000120	2010	502
84	000121	2010	838
84	000122	2010	1166
84	000123	2010	715
84	000124	2010	1278
84	000125	2010	252
84	000126	2010	1987
84	000127	2010	4366
84	000128	2010	1808

84	000129	2010	1083
84	000130	2010	1595
84	000131	2010	303
84	000132	2010	970
84	000133	2010	1373
84	000134	2010	13039
84	000135	2010	12575
84	000136	2010	4460
84	000137	2010	820
84	000138	2010	1200
84	000139	2010	2599
84	000140	2010	2999
84	000141	2010	4686
84	000142	2010	653
84	000143	2010	2008
84	000144	2010	1857
84	000145	2010	2351
84	000146	2010	4101
84	000147	2010	390
84	000148	2010	1349