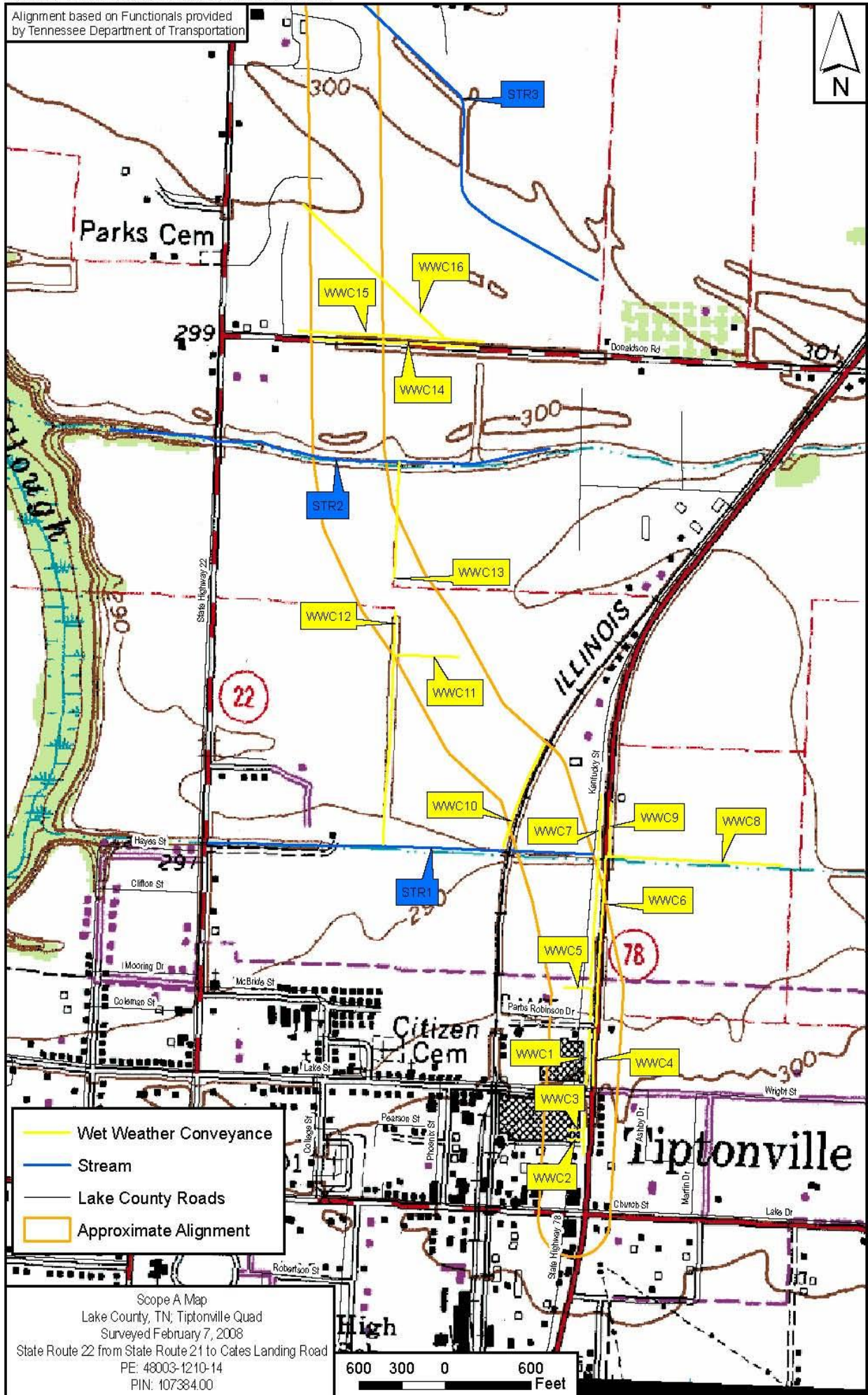
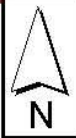
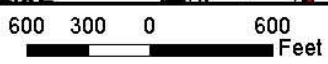


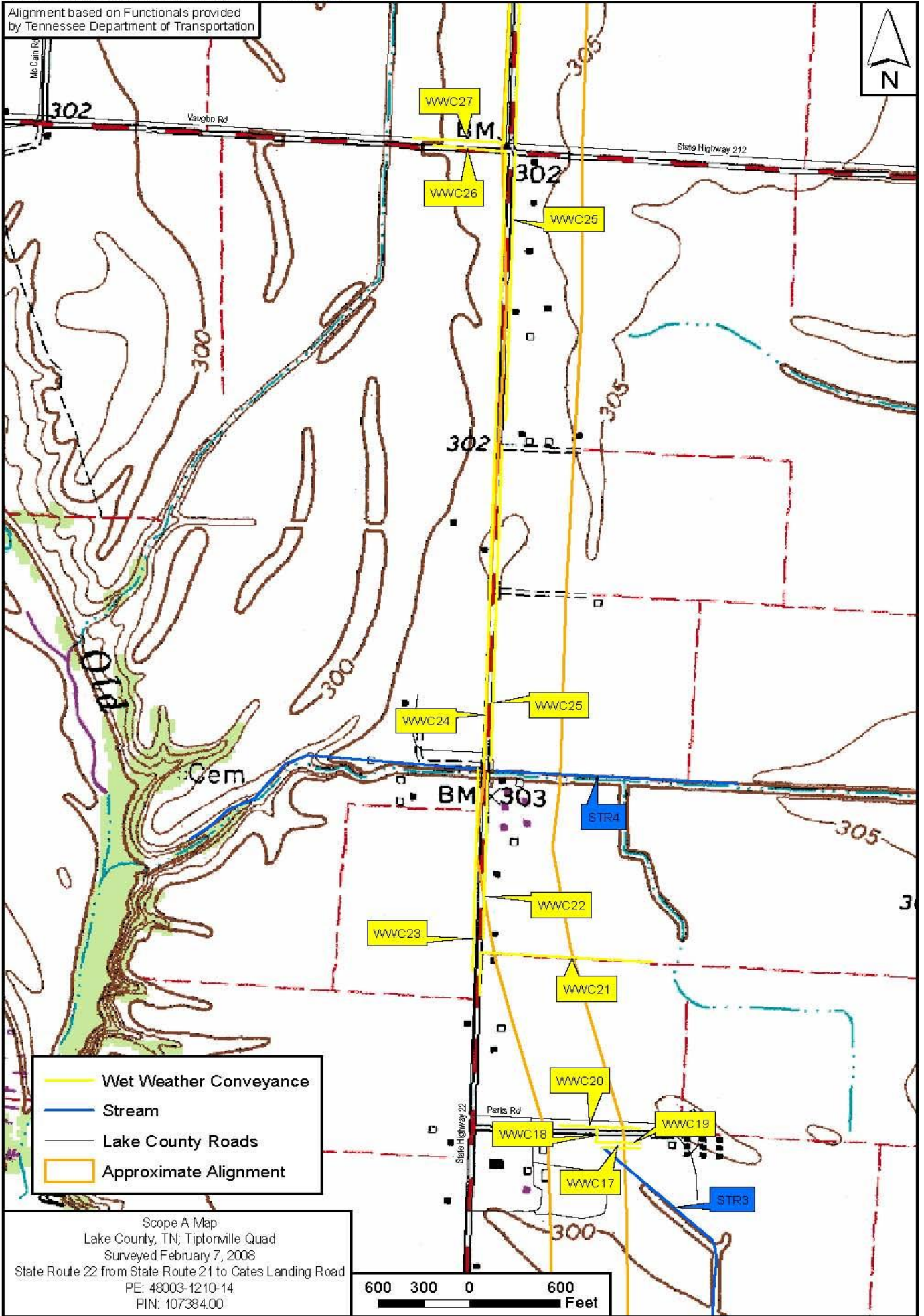
Alignment based on Functionals provided by Tennessee Department of Transportation



Scope A Map
 Lake County, TN, Tiptonville Quad
 Surveyed February 7, 2008
 State Route 22 from State Route 21 to Cates Landing Road
 PE: 48003-1210-14
 PIN: 107384.00

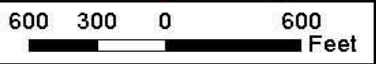


Alignment based on Functionals provided by Tennessee Department of Transportation

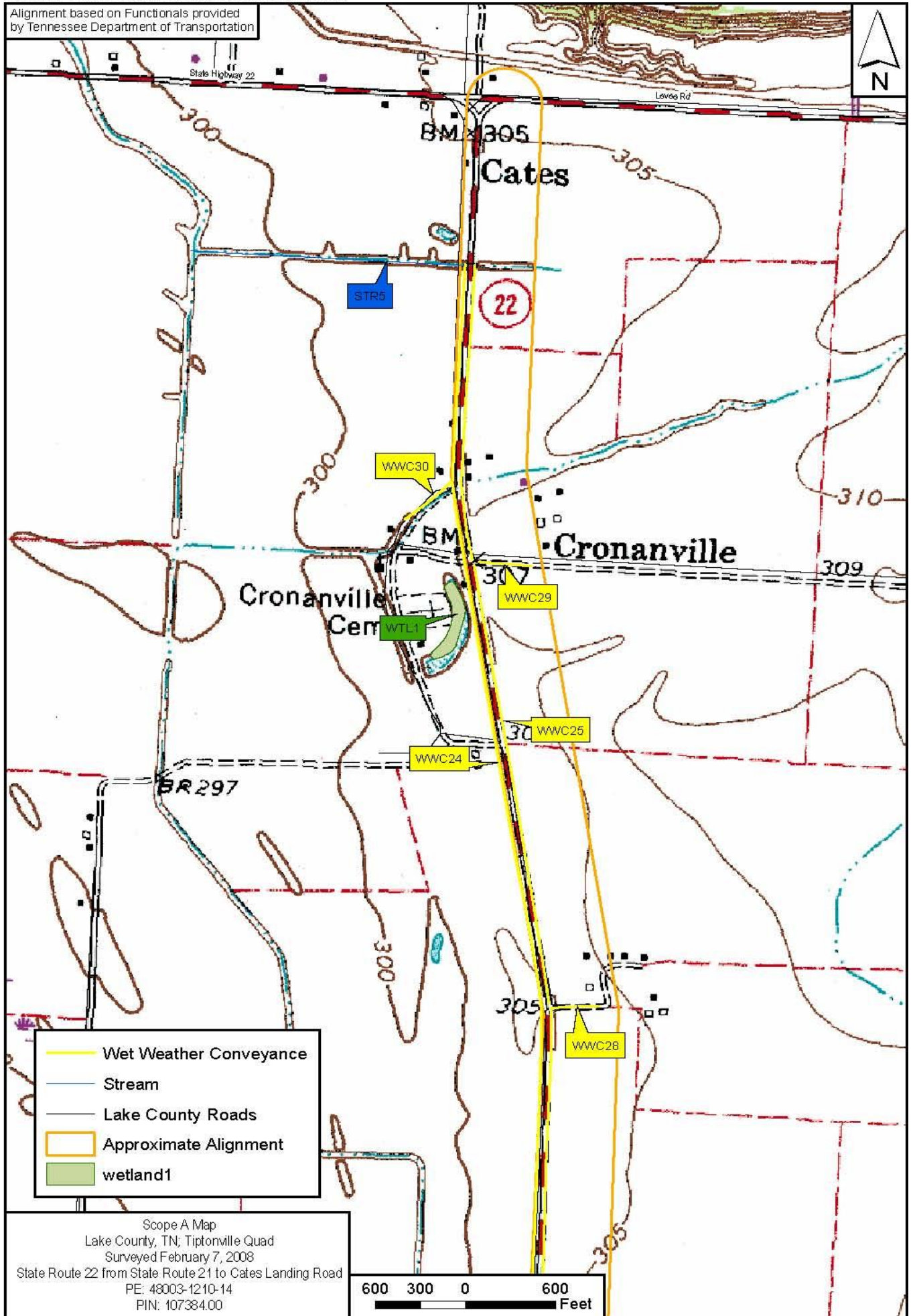


- Wet Weather Conveyance
- Stream
- Lake County Roads
- Approximate Alignment

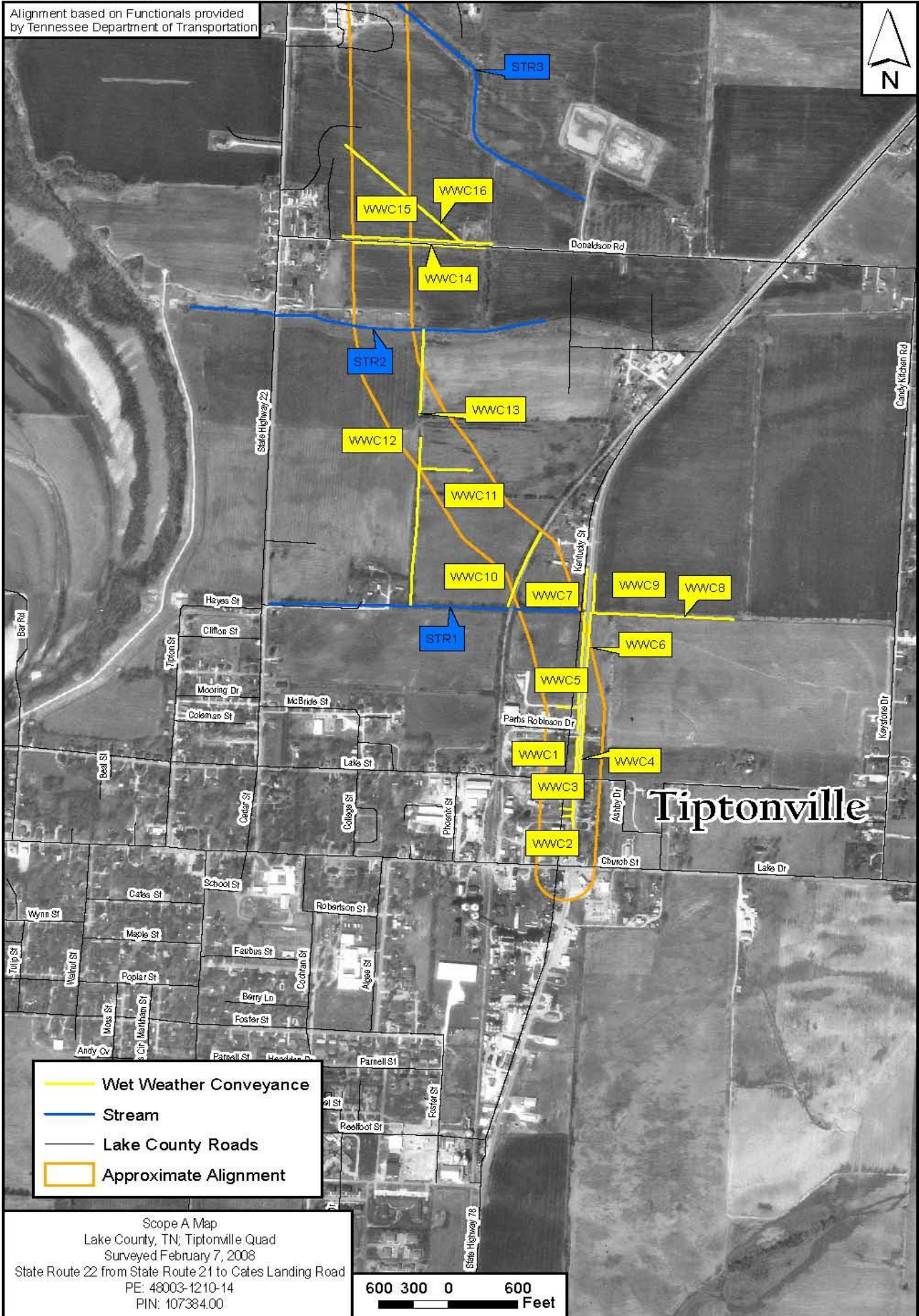
Scope A Map
Lake County, TN; Tiptonville Quad
Surveyed February 7, 2008
State Route 22 from State Route 21 to Cates Landing Road
PE: 48003-1210-14
PIN: 107384.00



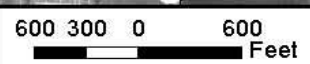
Alignment based on Functionals provided by Tennessee Department of Transportation



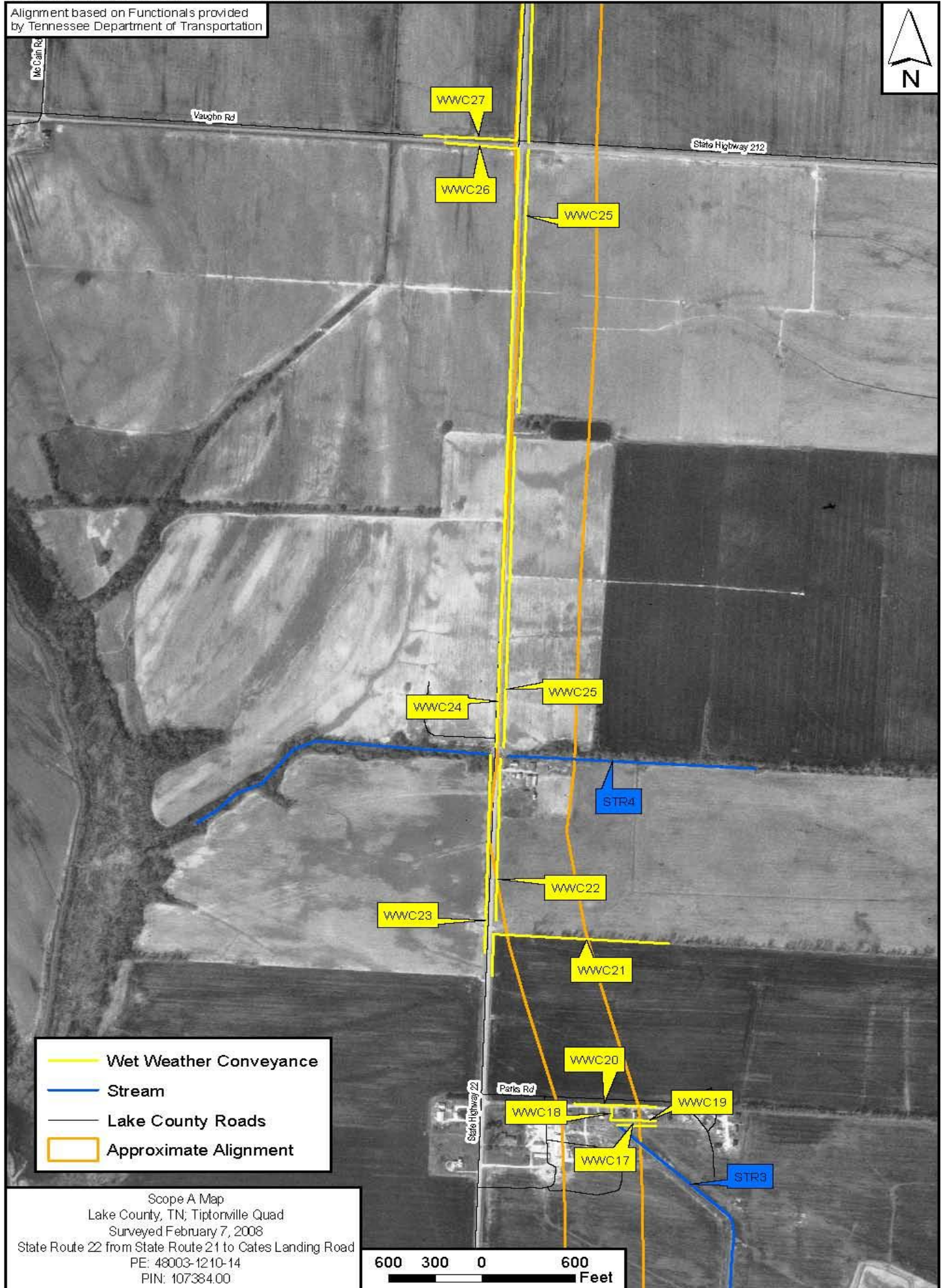
Alignment based on Functionals provided by Tennessee Department of Transportation



Scope A Map
Lake County, TN; Tiptonville Quad
Surveyed February 7, 2008
State Route 22 from State Route 21 to Cates Landing Road
PE: 48003-1210-14
PIN: 107384.00

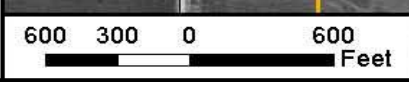


Alignment based on Functionals provided by Tennessee Department of Transportation

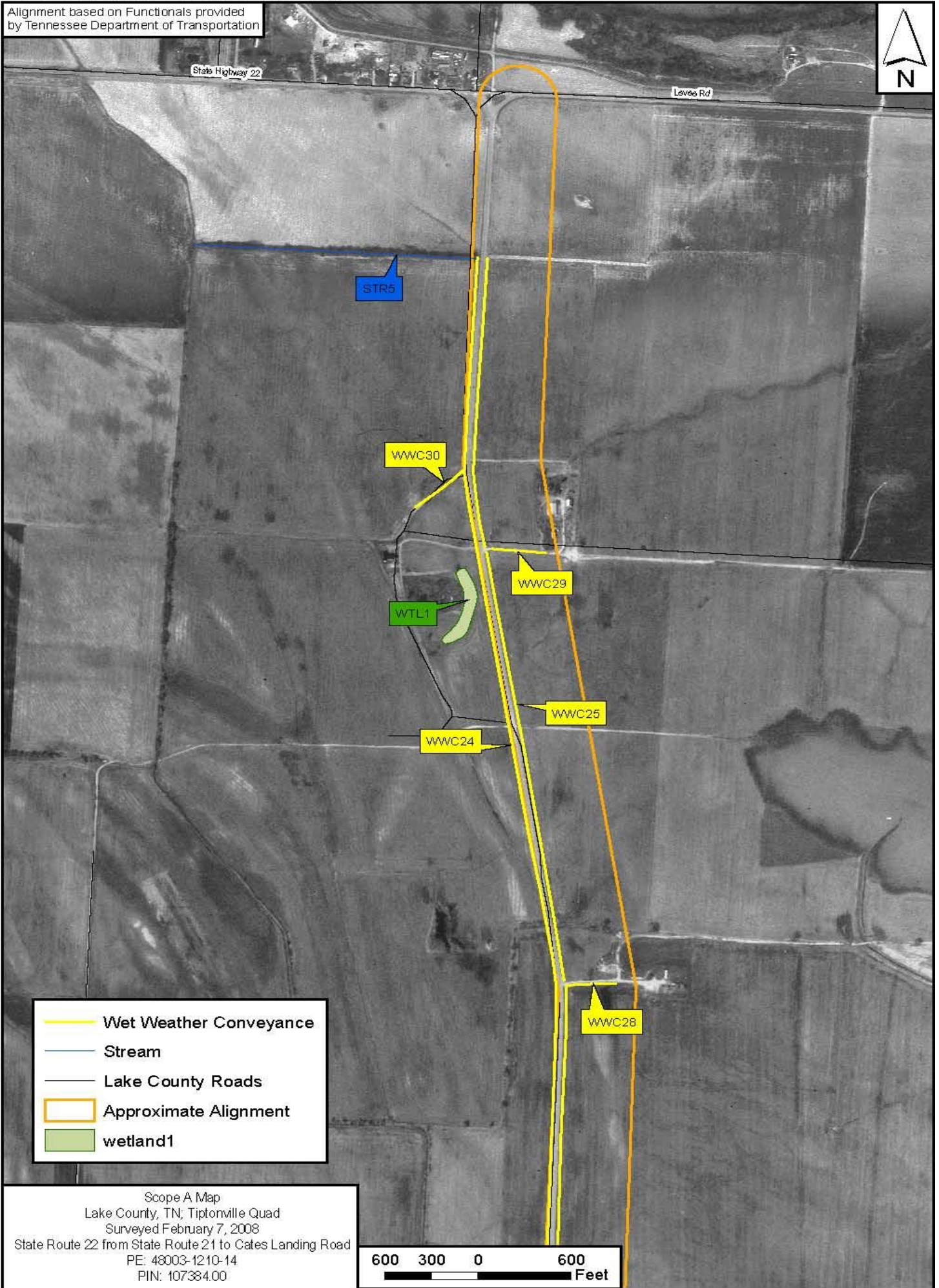


- Wet Weather Conveyance
- Stream
- Lake County Roads
- Approximate Alignment

Scope A Map
Lake County, TN; Tiptonville Quad
Surveyed February 7, 2008
State Route 22 from State Route 21 to Cates Landing Road
PE: 48003-1210-14
PIN: 107384.00



Alignment based on Functionals provided by Tennessee Department of Transportation



- Wet Weather Conveyance
- Stream
- Lake County Roads
- Approximate Alignment
- wetland1

Scope A Map
Lake County, TN; Tiptonville Quad
Surveyed February 7, 2008
State Route 22 from State Route 21 to Cates Landing Road
PE: 48003-1210-14
PIN: 107384.00

