



PUBLIC WORKSHOP FOR THE PROPOSED KNOXVILLE REGIONAL PARKWAY

**Presented by the Regional Parkway Design Resource Team
and the Tennessee Department of Transportation**

I-40/I-75

REGIONAL PARKWAY DESIGN RESOURCE TEAM

Nov. 10, 2003 – TDOT announced that a modified Orange Route would be built with input from the local community using the Context Sensitive Solutions process.




The Regional Parkway Design Resource Team is made up of 19 individuals representing various stakeholders.

The team members were chosen by the Knoxville TPO.

The Team is charged with the responsibility of recommending an alignment to TDOT in October 2005.

CONTEXT SENSITIVE SOLUTIONS PROCESS

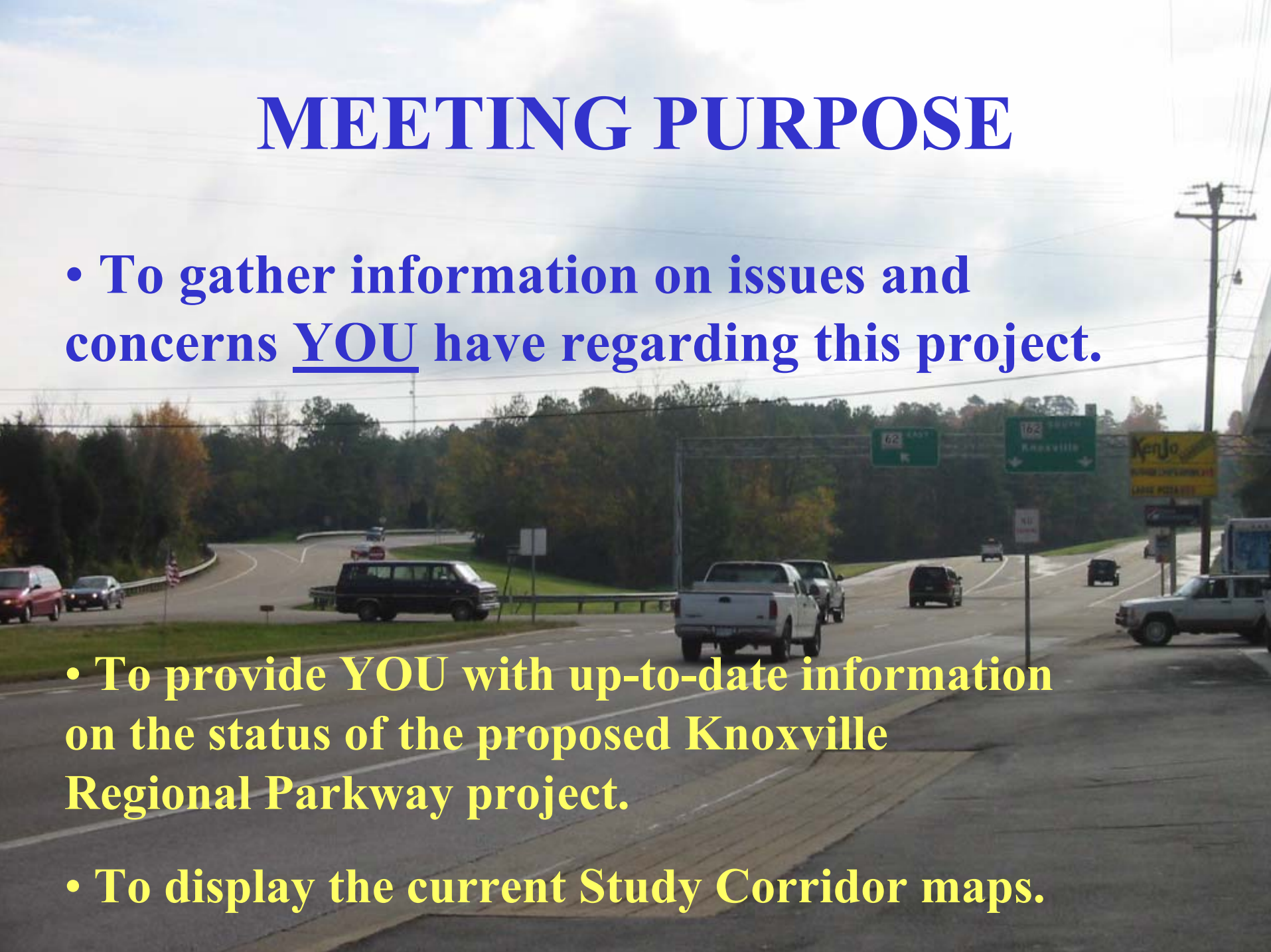
- 
- Any highway design requires balancing various interests including safety, economy, aesthetics, environment, and utility as well as others.
 - Controversy usually centers around deciding the relative weights of these factors for a given situation.
 - The Context Sensitive Solutions process seeks to actively involve the public in the decision making process so there is consensus on the resulting design.

MEETING PURPOSE

- To gather information on issues and concerns YOU have regarding this project.

- To provide **YOU** with up-to-date information on the status of the proposed Knoxville Regional Parkway project.

- To display the current Study Corridor maps.



PUBLIC INPUT

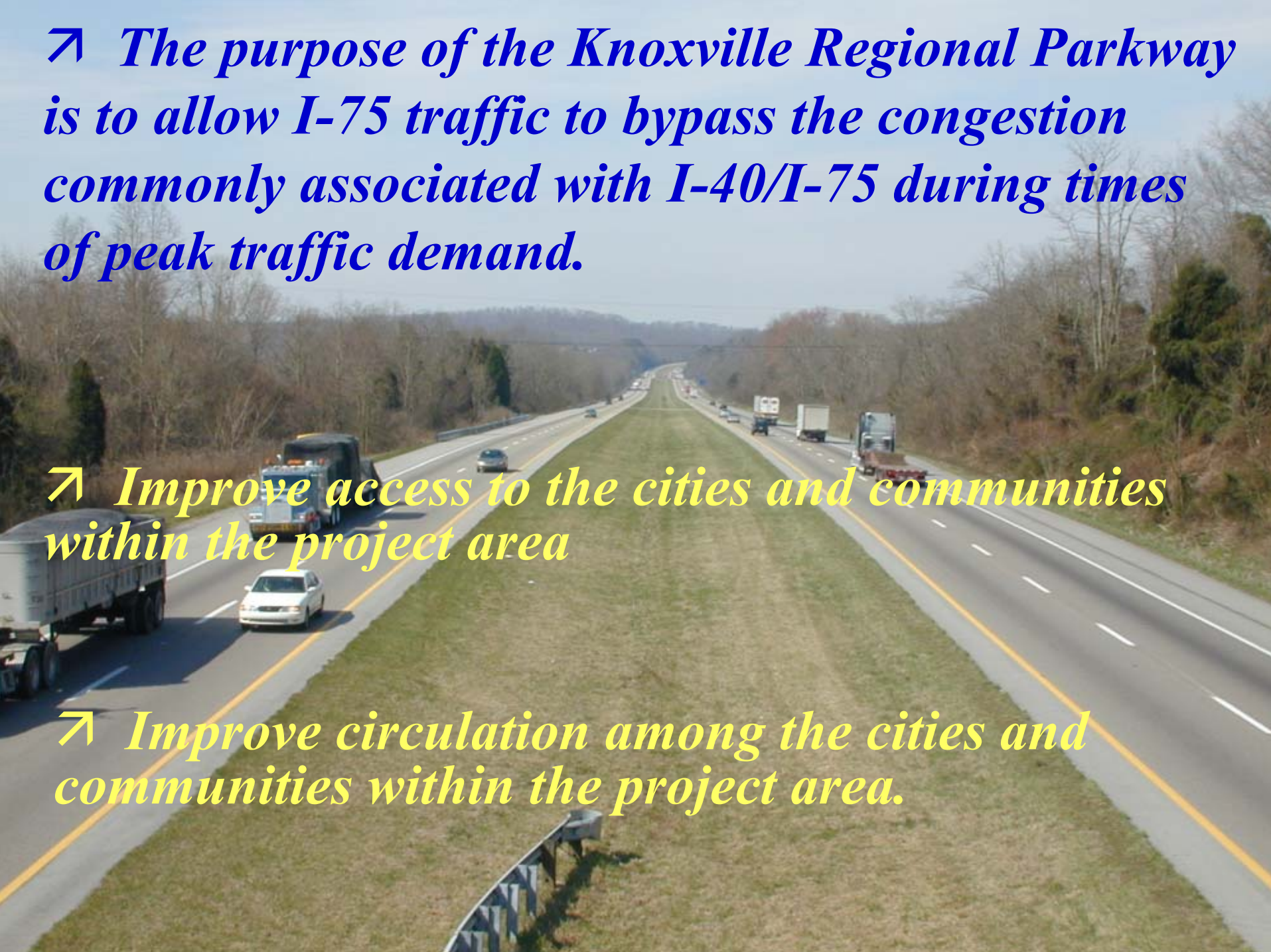
A group of people, including men and women of various ages, are gathered around a table. They are looking at documents and maps spread out on the table. One man in a white shirt and tie is leaning over the table, pointing at a document. Another man in a white shirt and cap is looking at the documents. A woman in a white shirt is looking at a document. A man in a striped shirt and cap is looking at the documents. A man in a blue shirt and cap is looking at the documents. The background shows a dark wall with some posters or maps.

- *Comment Sheet - Written Comments*
- *Mail-in Comments Within 10 days*
- *Email info@KnoxvilleParkway.com*
- *Court Reporter - Oral Comments*
- *Mark Locations on Maps*

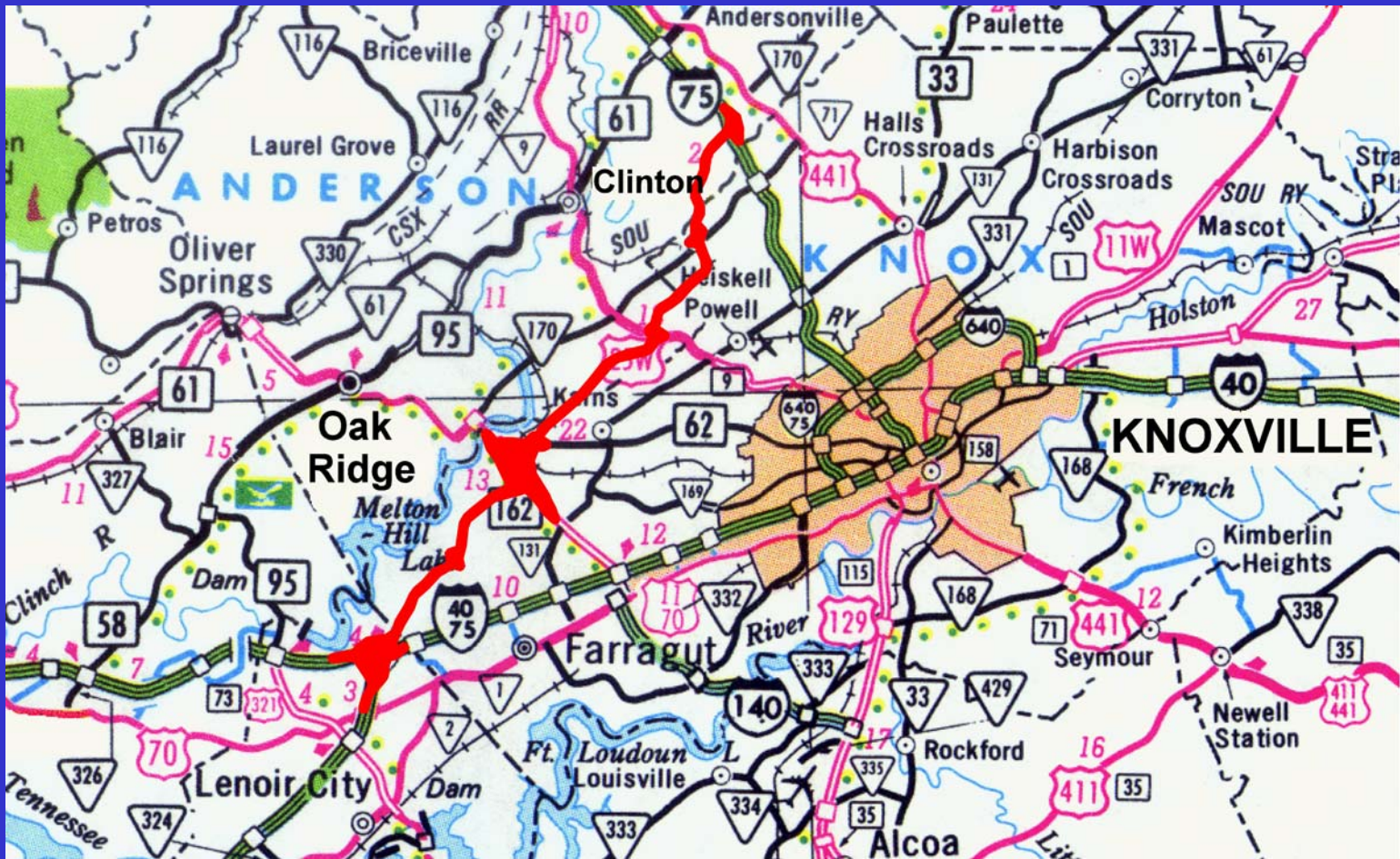
➤ The purpose of the Knoxville Regional Parkway is to allow I-75 traffic to bypass the congestion commonly associated with I-40/I-75 during times of peak traffic demand.

➤ Improve access to the cities and communities within the project area

➤ Improve circulation among the cities and communities within the project area.



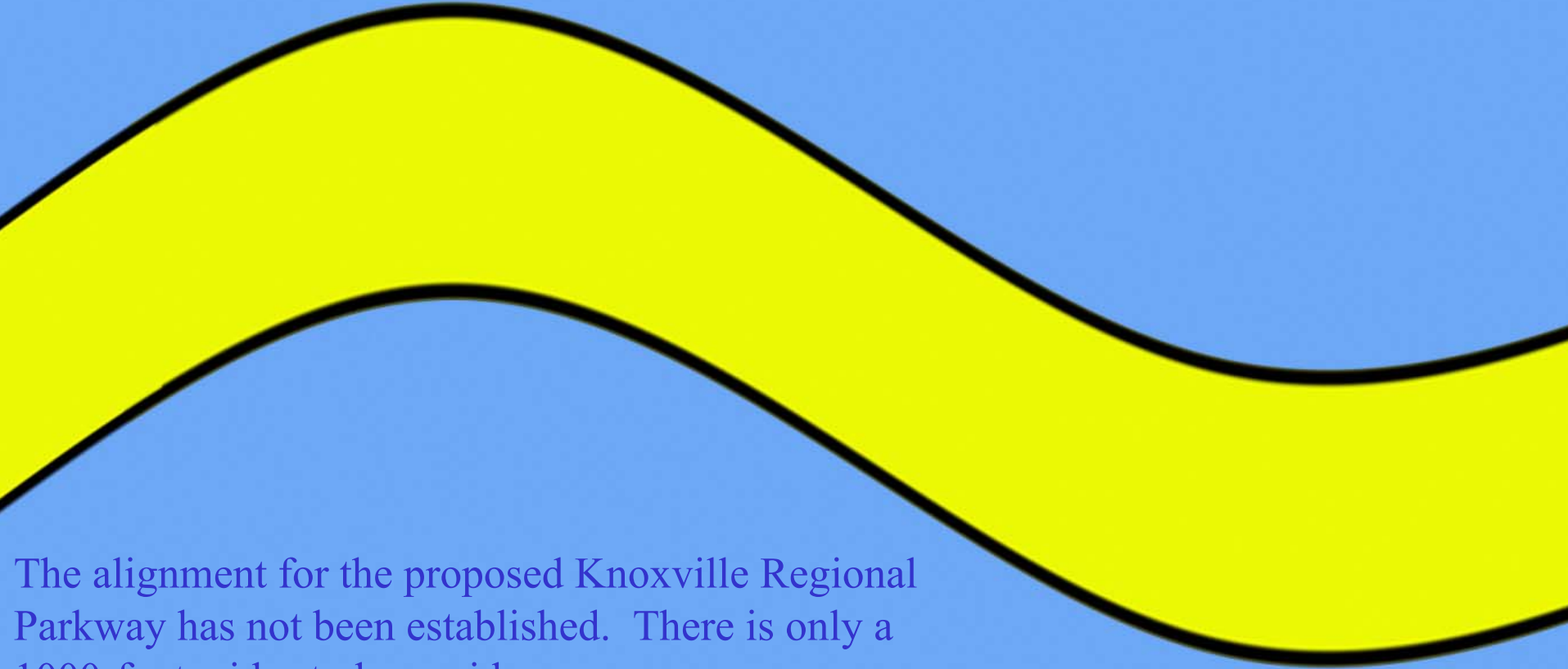
KNOXVILLE REGIONAL PARKWAY CORRIDOR



- 24 miles from the I-40/I-75 junction west of Knoxville to I-75 north of Knoxville.
- Segment of Independent Utility.

1000 FOOT STUDY CORRIDOR

Study Corridor

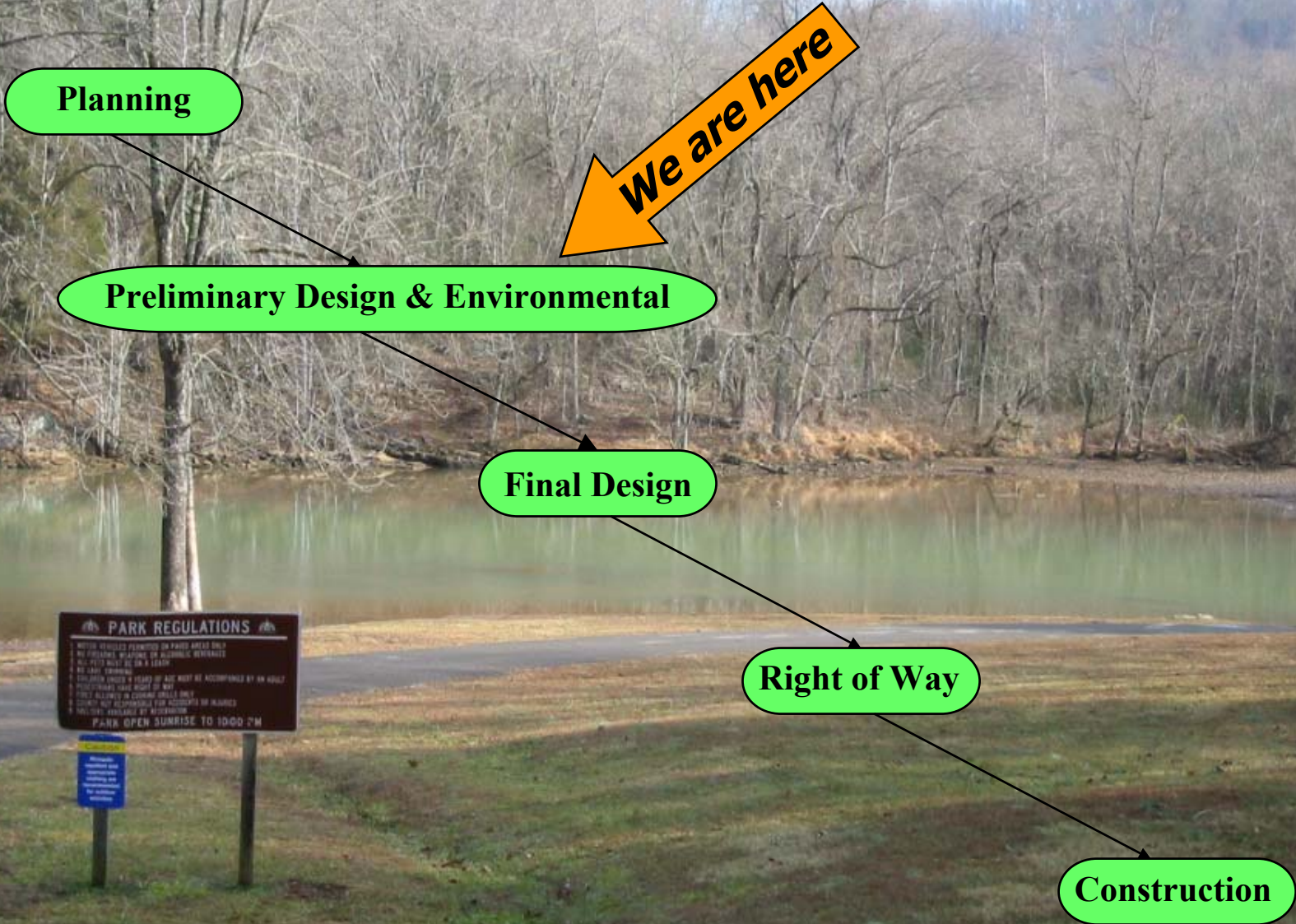


The alignment for the proposed Knoxville Regional Parkway has not been established. There is only a 1000-foot wide study corridor.

Study Corridor

Comments gathered from the public will be used by the Regional Parkway Design Resource Team as they develop various alternative alignments within the 1000-foot study corridor. These alternatives will be shown for review and comment at the next series of Public Workshops in the spring of 2005.

PROJECT DEVELOPMENT PROCESS



PARK REGULATIONS

- 1. MOTOR VEHICLES PERMITTED ON PARKS BRIDGES ONLY
- 2. NO FIREARMS, WEAPONS, OR ALCOHOLIC BEVERAGES
- 3. ALL FEES MUST BE IN CASH
- 4. NO CAMPING
- 5. CHILDREN UNDER 12 YEARS OF AGE MUST BE ACCOMPANIED BY AN ADULT
- 6. NO FEEDING WILD BIRDS OR BEES
- 7. FEES ALLOWED IN COMRAH GULLS ONLY
- 8. VISITORS NOT RESPONSIBLE FOR ACCIDENTS OR INJURIES
- 9. NO FEES ALLOWED BY RESIDENTS

PARK OPEN SUNRISE TO 1000 PM

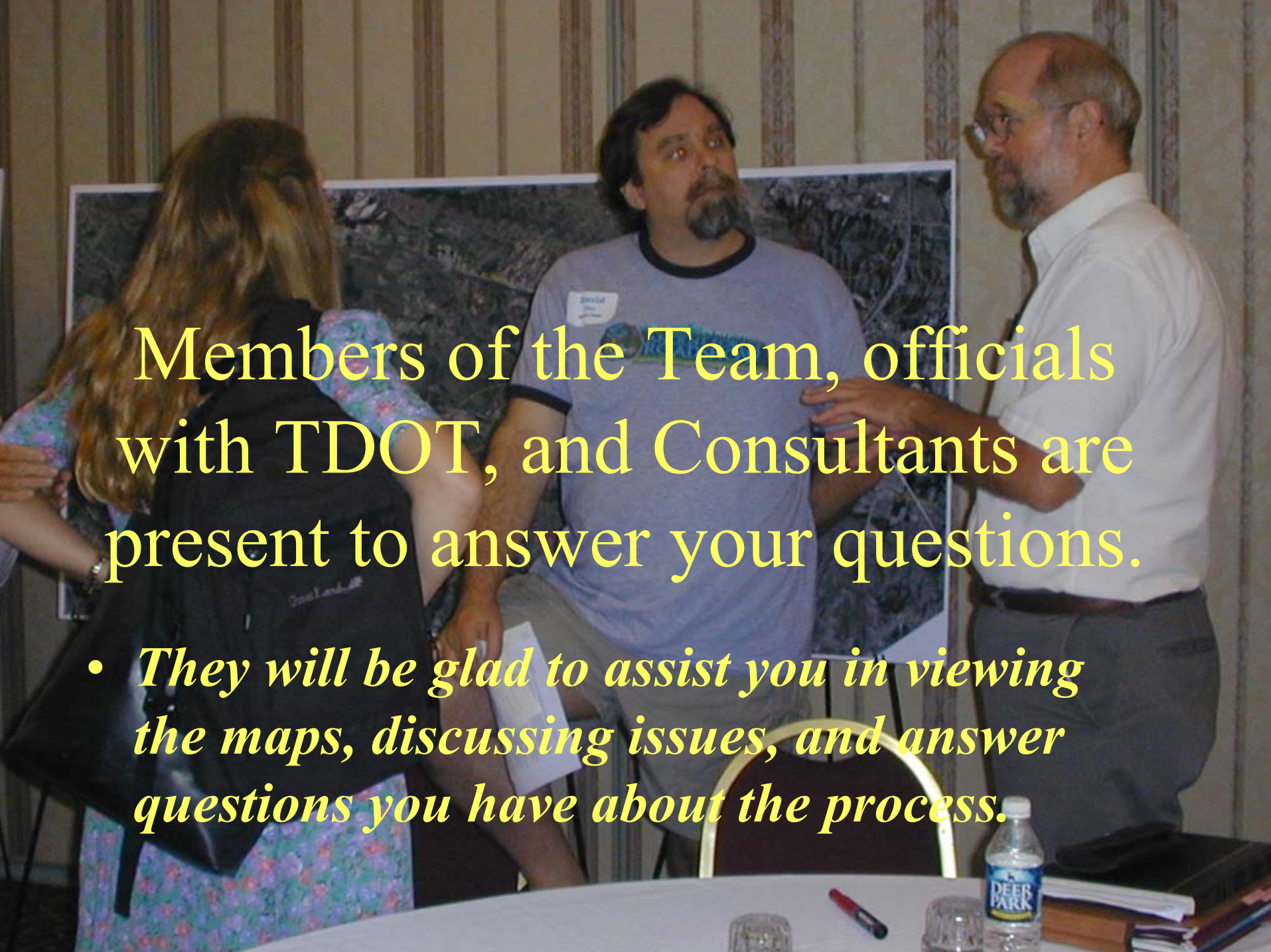
Resident
Information and
Assistance
Call
404-377-1234

WORKSHOP HANDOUT PACKET

- *Application for Regional Subcommittees of the Design Resource Team.*



- *1 – Loudon County*
- *2 – Hardin Valley*
- *3 – Solway and Karns*
- *4 – Claxton, Powell, Heiskell, and I-75 Interchange*
- *Please fill out a comment sheet and turn it in before you leave. You can mail in additional comments within ten days and they will be included in the workshop report.*



Members of the Team, officials with TDOT, and Consultants are present to answer your questions.

- They will be glad to assist you in viewing the maps, discussing issues, and answer questions you have about the process.*

**The Regional Parkway Design
Resource Team and the Tennessee
Department of Transportation
thank you for your participation
in this
Public Workshop for the
Knoxville Regional Parkway.**



**THIS PRESENTATION WILL
REPLAY IN 30 SECONDS.**

